

VORTAC LAS 116.9 Chan 116	APP CRS 262°	Rwy Idg	26L	26R
		TDZE	10526	12638
		Apt Elev	2069	2067
			2181	2181

VOR RWY 26L/R

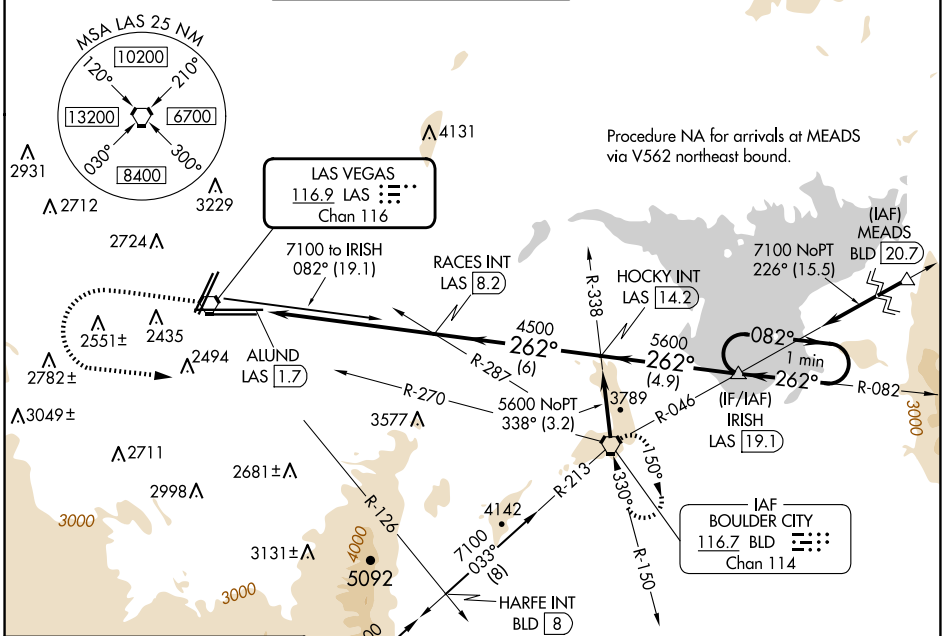
HARRY REID INTL (LAS)

⚠ For inop ALS, increase S-26L and S-26R Cat D visibility 1/2 SM.

MALSF Rwy 26L	MALS Rwy 26R

MISSED APPROACH: Climb to 4000 then climbing left turn to 6000 on heading 074° and BLD R-270 to BLD VORTAC and hold.

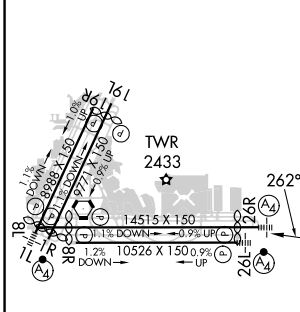
D-ATIS 132.4	LAS VEGAS APP CON 125.025 379.15 (West) 119.775 282.2 (East)	LAS VEGAS TOWER 118.75 257.8 (Rwy 1L/19R, 1R/19L) 119.9 257.8 (Rwy 8L/26R, 8R/26L)	GND CON 121.1 270.8 E of 1R/19L 121.9 254.3 W of 1L/19R	CLNC DEL 118.0	CPDLC
------------------------	--	--	---	--------------------------	-------



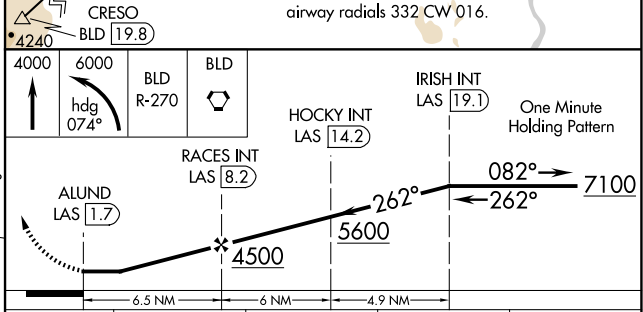
SW-4, 17 APR 2025 to 15 MAY 2025

SW-4, 17 APR 2025 to 15 MAY 2025

ELEV 2181	D TDZE 26L 2069 TDZE 26R 2067
-----------	---



REIL Rwy 1R, 8R, 19L and 19R	MIRL Rwy 1R-19L	HIRL Rwy 1L-19R, 8L-26R and 8R-26L	FAF to MAP 6.5 NM		
Knots	60	90	120	150	180
Min:Sec	6:30	4:20	3:15	2:36	2:10



CATEGORY	A	B	C	D
S-26L	2720-3/4	651 (600-3/4)	2720-1 1/8	651 (600-1 1/8)
S-26R	2720-3/4	653 (600-3/4)	2720-1 1/8	653 (600-1 1/8)
C CIRCLING	3020-1 1/4 839 (900-1 1/4)	3060-1 1/4 879 (900-1 1/4)	3100-2 3/4 919 (1000-2 3/4)	3540-3 1359 (1400-3)