

APP CRS	Rwy Idg	8417
194°	TDZE	2117
	Apt Elev	2181

RNAV (RNP) Z RWY 19R

HARRY REID INTL (LAS)

RNP AR APCH - GPS, RF, min RNP 0.50. Authorization required. Missed approach requires RNP < 1.00.

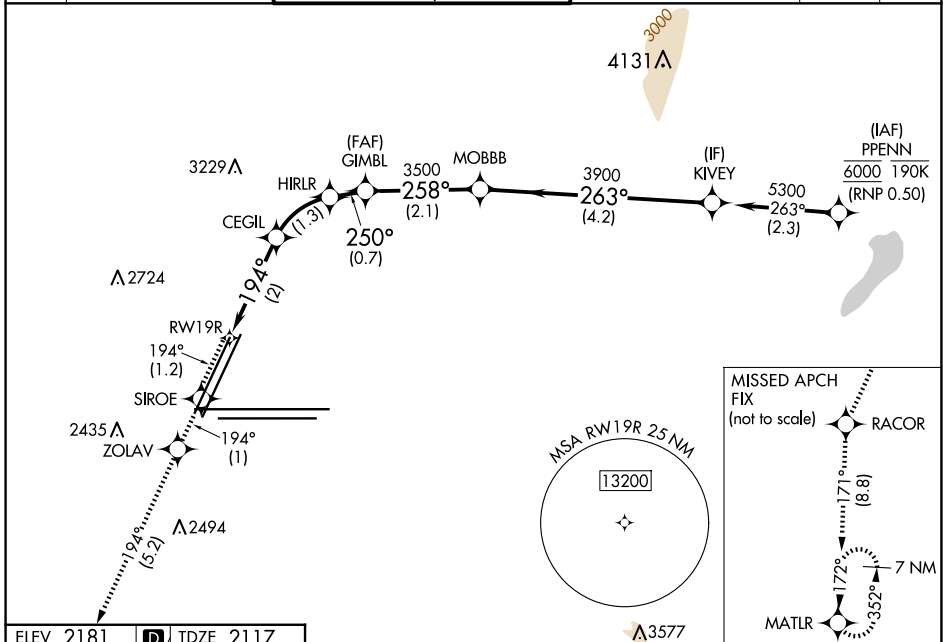
For uncompensated Baro-VNAV systems, procedure NA below 0°C or above 54°C.

MISSED APPROACH: Climb to 7000 on the RNAV missed approach route to MATLR and hold, continue climb-in-hold to 7000.

*Missed approach requires minimum climb of 273 feet per NM to 2940.

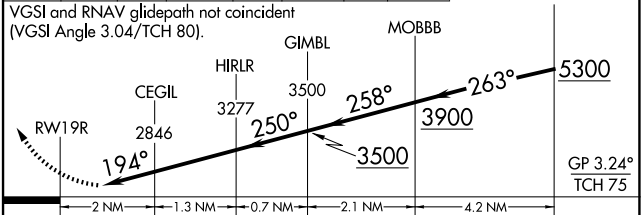
#Missed approach requires minimum climb of 235 feet per NM to 2960.

D-ATIS 132.4	LAS VEGAS APP CON	LAS VEGAS TOWER	GND CON	CLNC DEL	CPDLC
	125.025 379.15 (West) 119.775 282.2 (East)	118.75 257.8 (Rwy 1L/19R, 1R/19L) 119.9 257.8 (Rwy 8L/26R, 8R/26L)	121.1 270.8 E of 1R/19L 121.9 254.3 W of 1L/19R	118.0	



ELEV 2181	D	TDZE 2117
-----------	----------	-----------

7000	SIROE	ZOLAV	RACOR	MATLR	KIVEY
↑	tr 194°	tr 194°	tr 194°	tr 171°	



CATEGORY	A	B	C	D
RNP 0.10 DA*	2558-1 $\frac{3}{8}$		441 (400-1 $\frac{3}{8}$)	
RNP 0.20 DA#	2608-1 $\frac{3}{8}$		491 (500-1 $\frac{3}{8}$)	
RNP 0.30 DA	2669-1 $\frac{3}{8}$		552 (500-1 $\frac{3}{8}$)	

MIRL Rwy 1R-19L
REIL Rwy 1R, 8R, 19L and 19R
HIRL Rwy 1L-19R, 8L-26R and 8R-26L

AUTHORIZATION REQUIRED

SW-4, 17 APR 2025 to 15 MAY 2025

SW-4, 17 APR 2025 to 15 MAY 2025