

RADYR TWO DEPARTURE (RNAV) Departure Routes

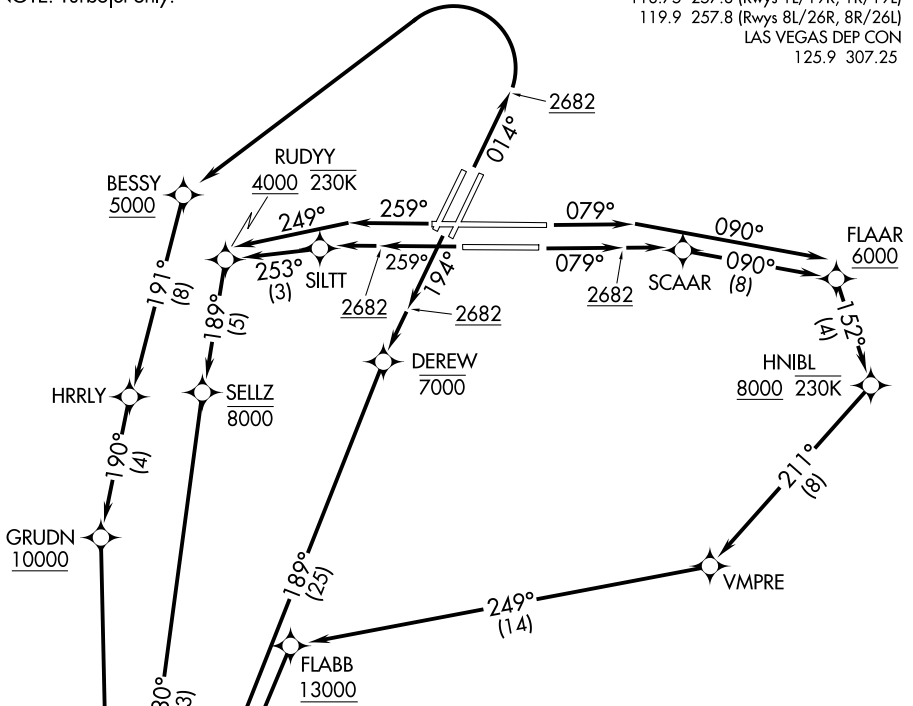
**TOP ALTITUDE:
FL190**

D-ATIS
132.4
CLNC DEL
118.0
CPDLC
GND CON
121.1 270.8 E of 1R/19L
121.9 254.3 W of 1L/19R
LAS VEGAS TOWER
118.75 257.8 (Rwys 1L/19R, 1R/19L)
119.9 257.8 (Rwys 8L/26R, 8R/26L)
LAS VEGAS DEP CON
125.9 307.25

NOTE: DME/DME/IRU or GPS required.
NOTE: RNAV 1.
NOTE: RADAR required for non-GPS equipped aircraft.
NOTE: Turbojet only.

SW-4, 17 APR 2025 to 15 MAY 2025

SW-4, 17 APR 2025 to 15 MAY 2025



TAKEOFF MINIMUMS

- Rwy 1L: Standard with minimum climb of 515' per NM to 4500.
- Rwy 1R: Standard with minimum climb of 530' per NM to 4500.
- Rwy 8L: Standard with minimum climb of 500' per NM to 2682, then minimum climb of 220' per NM to 6300.
- Rwy 8R: Standard with minimum climb of 500' per NM to 2682, then minimum climb of 215' per NM to 6300.
- Rwys 19L/R: Standard with minimum climb of 500' per NM to 2682, then minimum climb of 255' per NM to 4400.
- Rwy 26L: Standard with minimum climb of 500' per NM to 2682, then minimum climb of 270' per NM to 6700.
- Rwy 26R: Standard with minimum climb of 500' per NM to 2682, then minimum climb of 275' per NM to 6700.

See following page
for transition routes

(CONTINUED ON FOLLOWING PAGE)

NOTE: Chart not to scale.

RADYR TWO DEPARTURE (RNAV) Departure Routes