

WAAS CH 42800 W01A	APP CRS 014°	Rwy Idg TDZE Apt Elev	8785 2170 2181
--	------------------------	-----------------------------	---

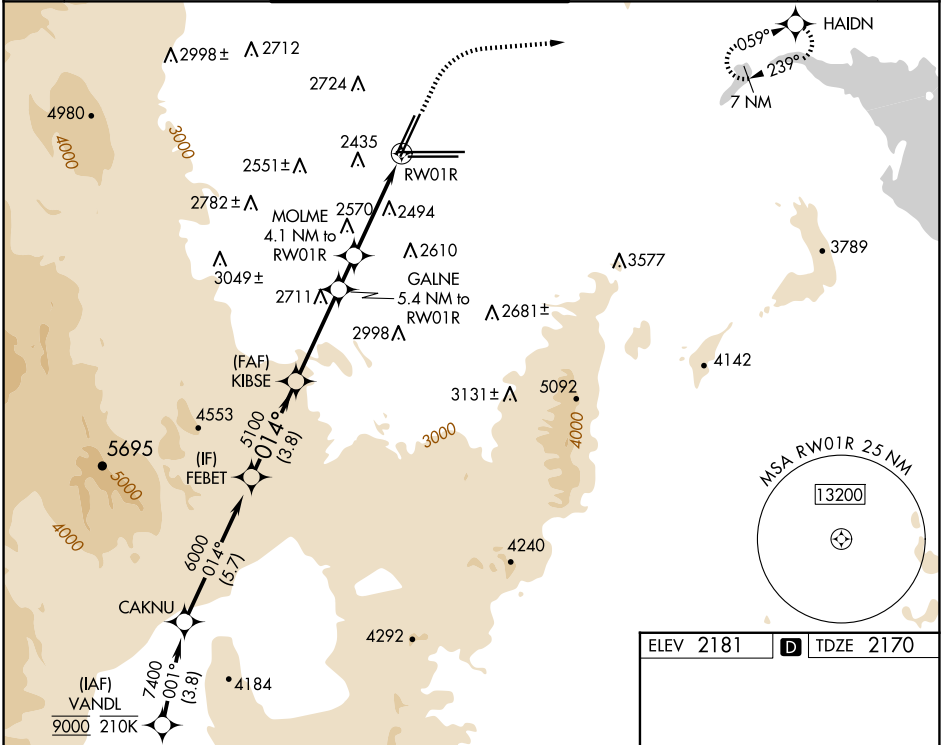
RNAV (GPS) RWY 1R

HARRY REID INTL (LAS)

RNP APCH - GPS. RADAR required.

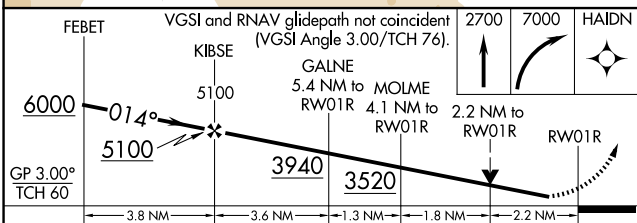
MISSED APPROACH: Climb to 2700 then climbing right turn to 7000 direct HAI DN and hold, continue climb-in-hold to 7000.

D-ATIS 132.4	LAS VEGAS APP CON 125.025 379.15 (West) 119.775 282.2 (East)	LAS VEGAS TOWER 118.75 257.8 (Rwy 1L/19R, 1R/19L) 119.9 257.8 (Rwy 8L/26R, 8R/26L)	GND CON 121.1 270.8 E of 1R/19L 121.9 254.3 W of 1L/19R	CLNC DEL 118.0	CPDLC
------------------------	--	--	---	--------------------------	-------



SW-4, 17 APR 2025 to 15 MAY 2025

SW-4, 17 APR 2025 to 15 MAY 2025



ELEV 2181	D TDZE 2170
-----------	--------------------

CATEGORY	A	B	C	D
LPV DA		2458-7/8	288 (300-7/8)	
LNAV/VNAV DA		2641-13/8	471 (500-13/8)	
LNAV MDA	2960-1 790 (800-1)	2960-1 1/4 790 (800-1 1/4)	2960-2 1/2 790 (800-2 1/2)	790 (800-2 1/2)
C CIRCLING	3020-1 1/4 839 (900-1 1/4)	3060-1 1/4 879 (900-1 1/4)	3100-2 3/4 919 (1000-2 3/4)	3540-3 1359 (1400-3)