

(MCCRN8.LAS) 25107  
**MCCARRAN EIGHT DEPARTURE**

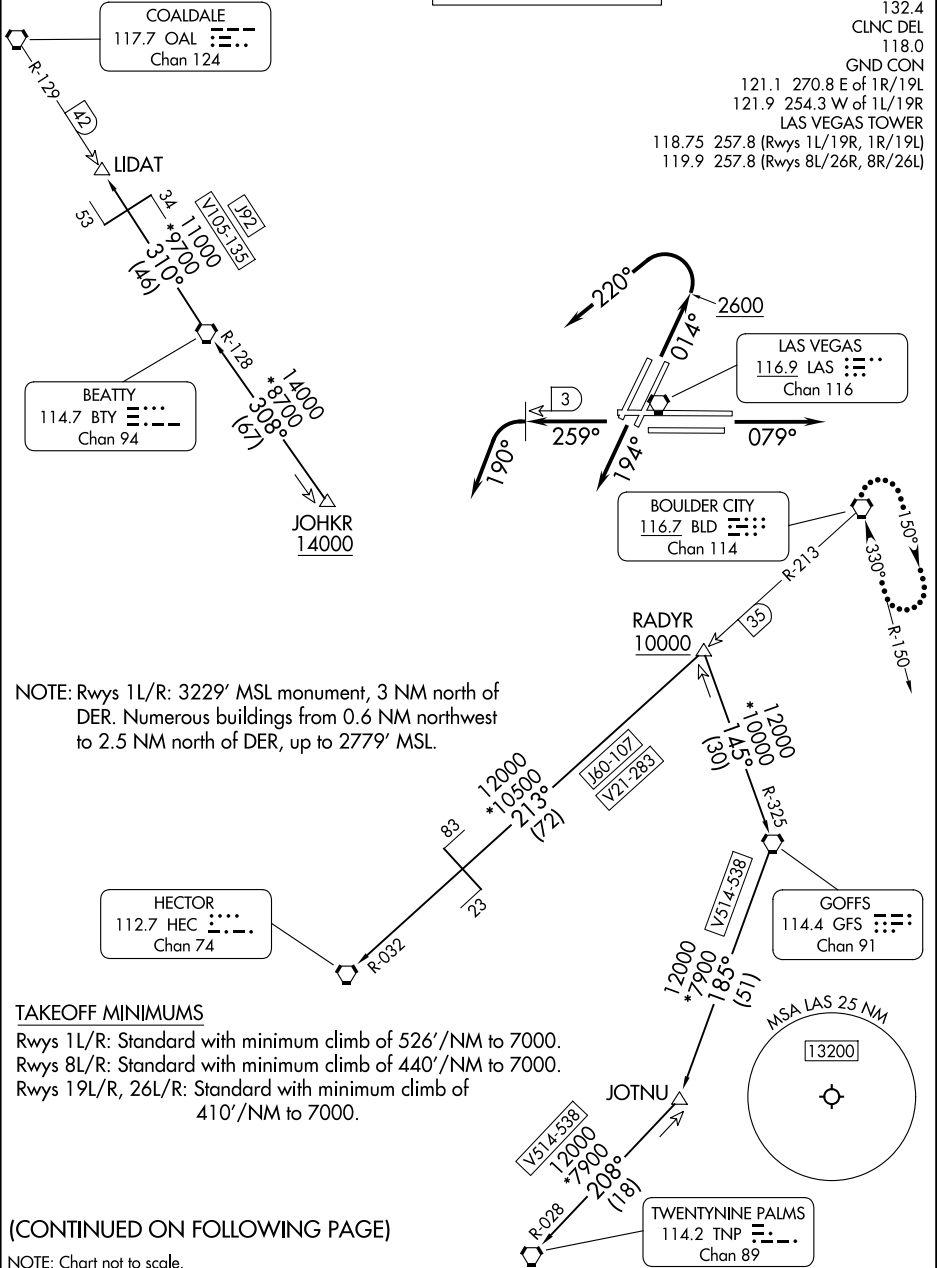
AL-662 (FAA)

HARRY REID INTL (LAS)  
 LAS VEGAS, NEVADA

RADAR and DME required.

**TOP ALTITUDE:  
 ASSIGNED BY ATC**

LAS VEGAS DEP CON  
 125.9 307.25  
 D-ATIS  
 132.4  
 CLNC DEL  
 118.0  
 GND CON  
 121.1 270.8 E of 1R/19L  
 121.9 254.3 W of 1L/19R  
 LAS VEGAS TOWER  
 118.75 257.8 (Rwys 1L/19R, 1R/19L)  
 119.9 257.8 (Rwys 8L/26R, 8R/26L)



NOTE: Rwys 1L/R: 3229' MSL monument, 3 NM north of DER. Numerous buildings from 0.6 NM northwest to 2.5 NM north of DER, up to 2779' MSL.

**TAKEOFF MINIMUMS**

Rwys 1L/R: Standard with minimum climb of 526'/NM to 7000.  
 Rwys 8L/R: Standard with minimum climb of 440'/NM to 7000.  
 Rwys 19L/R, 26L/R: Standard with minimum climb of 410'/NM to 7000.

(CONTINUED ON FOLLOWING PAGE)

NOTE: Chart not to scale.

**MCCARRAN EIGHT DEPARTURE**  
 (MCCRN8.LAS) 17APR25

LAS VEGAS, NEVADA  
 HARRY REID INTL (LAS)

SW-4, 17 APR 2025 to 15 MAY 2025

SW-4, 17 APR 2025 to 15 MAY 2025