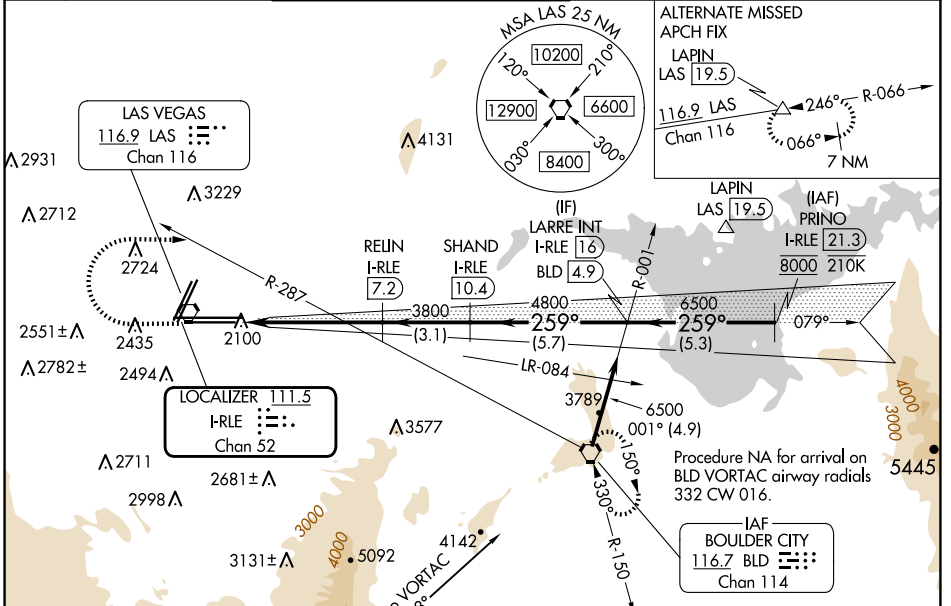


LOC/DME I-RLE <b>111.5</b> Chan <b>52</b>	APP CRS <b>259°</b>	Rwy Idg <b>10526</b> TDZE <b>2069</b> Apt Elev <b>2181</b>	<b>26L</b> <b>12638</b> <b>2067</b> <b>2181</b>
---	------------------------	---	--

# ILS Z or LOC Z RWY 26L

HARRY REID INTL (LAS)

DME required.		MALS F Rwy 26L	MALS Rwy 26R	MISSED APPROACH: Climb to 3200 then climbing right turn to 6000 heading 080° and on BLD R-287 to BLD VORTAC and hold, continue climb-in-hold to 6000.	
Inop table does not apply to S-ILS 26L and Sidestep 26R. For inop ALS, increase S-LOC 26L Cat C/D/E visibility to 1 3/8 SM.					
D-ATIS <b>132.4</b>	LAS VEGAS APP CON <b>125.025 379.15</b> (West) <b>119.775 282.2</b> (East)	LAS VEGAS TOWER <b>118.75 257.8</b> (Rwy 1L/19R, 1R/19L) <b>119.9 257.8</b> (Rwy 8L/26R, 8R/26L)	GND CON <b>121.1 270.8</b> E of 1R/19L <b>121.9 254.3</b> W of 1L/19R	CLNC DEL <b>118.0</b>	CPDLC



3200	6000	BLD R-287	BLD	VGSI and ILS glidepath not coincident (VGSI Angle 3.00/TCH 84).	
hdg 080°		RELIN I-RLE (3.1)	RELIN I-RLE (7.2)	SHAND I-RLE (10.4)	LARRE INT I-RLE (16)
I-RLE (1.9)		3800	3800	4800	6500
I-RLE (3.1)		3800	3800	4800	6500
I-RLE (7.2)		3800	3800	4800	6500
I-RLE (10.4)		3800	3800	4800	6500
I-RLE (16)		3800	3800	4800	6500
I-RLE (21.3)		3800	3800	4800	6500
GS 3.00° TCH 60		3800	3800	4800	6500
CATEGORY	A	B	C	D	E
S-ILS 26L	2269-3/4 200 (100-3/4)				
S-LOC 26L	2520-3/4	451 (400-3/4)	2520-1 451 (400-1)		
SIDESTEP 26R	2560-1	493 (400-1)	2560-1 1/2 493 (400-1 1/2)	2560-2	493 (400-2)
CIRCLING	3020-1 1/4 839 (900-1 1/4)	3060-1 1/4 879 (900-1 1/4)	3100-2 3/4 919 (1000-2 3/4)	3540-3	1359 (1400-3)

ELEV 2181 **D** TDZE 26L 2069 TDZE 26R 2067

PRINO I-RLE (21.3)

LARRE INT I-RLE (16)

SHAND I-RLE (10.4)

RELIN I-RLE (7.2)

RELIN I-RLE (3.1)

I-RLE (1.9)

GS 3.00° TCH 60

TWR 2433

14515 X 150

10526 X 150 0.9% UP

10268 X 150 1.2% DOWN

10268 X 150 0.9% UP

10268 X 150 1.2% DOWN

259°

MIRL Rwy 1R-19L  
REIL Rws 1R, 8R, 19L and 19R  
HIRL Rws 1L-19R, 8L-26R and 8R-26L

SW-4, 17 APR 2025 to 15 MAY 2025

SW-4, 17 APR 2025 to 15 MAY 2025