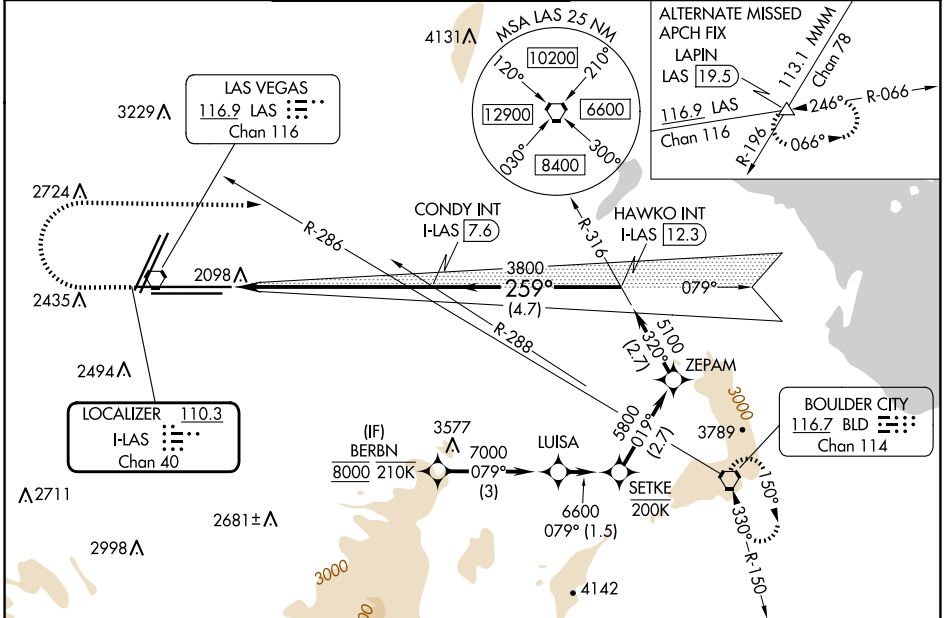


LOC/DME FAS 110.3 Chan 40	APP CRS 259°	Rwy Idg 26R 12638 26L 10526	TDZE 2067 2069	Apt Elev 2181 2181
---	------------------------	---	------------------------------------	--

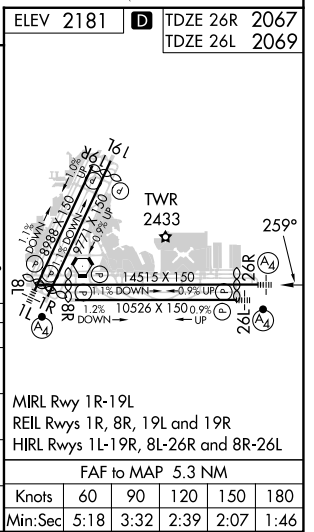
ILS Y or LOC Y RWY 26R

HARRY REID INTL (LAS)

RNP APCH - GPS.		MALS Rwy 26R	MALSF Rwy 26L	MISSED APPROACH: Climb to 3200 then climbing right turn to 6000 heading 080° and on BLD R-286 to BLD VORTAC and hold, continue climb-in-hold to 6000.		
<p>▼ Inop table does not apply to Sidestep 26L. For inop ALS, increase S-ILS-26R all Cats visibility to ½ SM.</p>		(A4)	(A4)			
D-ATIS 132.4	LAS VEGAS APP CON 125.025 379.15 (West) 119.775 282.2 (East)	LAS VEGAS TOWER 118.75 257.8 (Rwy 1L/19R, 1R/19L) 119.9 257.8 (Rwy 8L/26R, 8R/26L)		GND CON 121.1 270.8 E of 1R/19L 121.9 254.3 W of 1L/19R	CLNC DEL 118.0	CPDLC



ELEV 3200	6000	BLD R-286	VGSI and ILS glidepath not coincident (VGSI Angle 3.00/TCH 84).	BERBN
hdg 080°				
1.4 NM	4 NM	4.7 NM	2.7 NM	2.7 NM
3800	5100	5800	6600	8000
HAWKO INT I-LAS (2.3)	CONDY INT I-LAS (7.6)	ZEPAM	SETKE	LUISA
3200	3800	5100	5800	6600
079°	079°	079°	079°	079°
GS 3.00°	TCH 60			
CATEGORY A	B		C	D
S-ILS 26R	2334-¾ 267 (200-¾)			
S-LOC 26R	2560-¾ 493 (400-¾)	2560-1½ 493 (400-1½)		
SIDESTEP 26L	2560-1 491 (400-1)	2560-2 491 (400-2)		
CIRCLING	3020-1¼ 839 (900-1¼)	3060-1¼ 879 (900-1¼)	3100-2¾ 919 (1000-2¾)	3540-3 1359 (1400-3)



SW-4, 17 APR 2025 to 15 MAY 2025

SW-4, 17 APR 2025 to 15 MAY 2025