

(FRNCK1.FRNCK) 24249

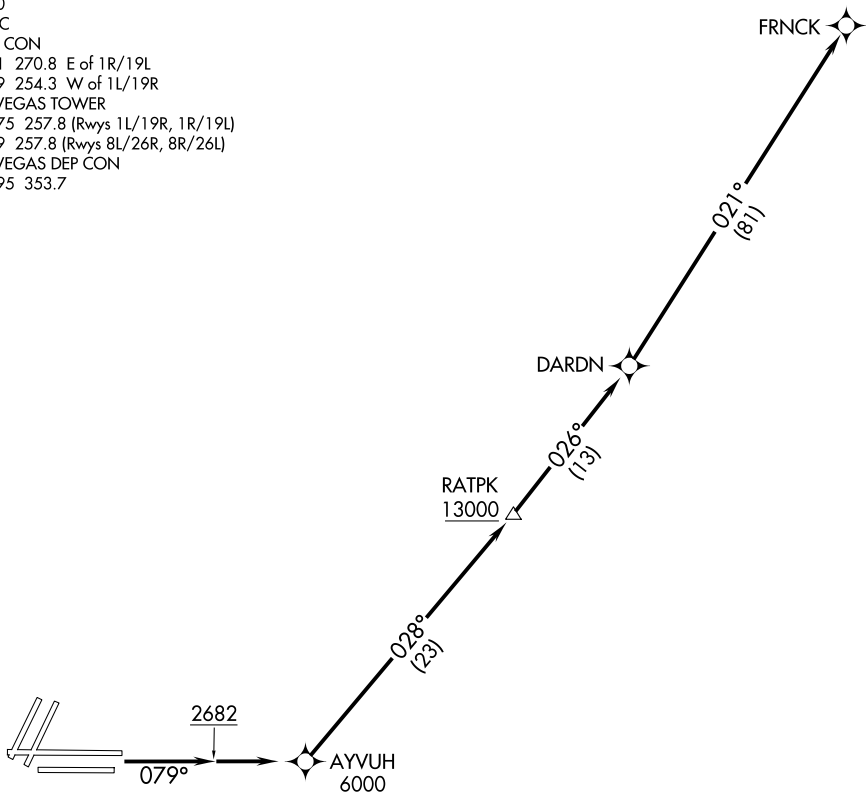
# FRNCK ONE DEPARTURE (RNAV)

AL-662 (FAA)

HARRY REID INTL (LAS)  
LAS VEGAS, NEVADA

D-ATIS  
 132.4  
 CLNC DEL  
 118.0  
 CPDLC  
 GND CON  
 121.1 270.8 E of 1R/19L  
 121.9 254.3 W of 1L/19R  
 LAS VEGAS TOWER  
 118.75 257.8 (Rwys 1L/19R, 1R/19L)  
 119.9 257.8 (Rwys 8L/26R, 8R/26L)  
 LAS VEGAS DEP CON  
 133.95 353.7

**TOP ALTITUDE:  
 FL190**



SW-4, 17 APR 2025 to 15 MAY 2025

SW-4, 17 APR 2025 to 15 MAY 2025

### TAKEOFF MINIMUMS

Rwys 8L/R: Standard with minimum climb of 500' per NM to 2682.

- NOTE: DME/DME/IRU or GPS required.
- NOTE: RNAV 1.
- NOTE: RADAR required for non-GPS equipped aircraft.
- NOTE: Turbojet only.

NOTE: Chart not to scale.



### DEPARTURE ROUTE DESCRIPTION

TAKEOFF RUNWAYS 8L/R: Climb on heading 079° to 2682, then direct to cross AYYUH at or above 6000, thence. . . .

. . . .thence on track 028° to cross RATPK at or above 13000, then on track 026° to DARDN, then on track 021° to FRNCK. Maintain FL190. Expect filed altitude 10 minutes after departure.

# FRNCK ONE DEPARTURE (RNAV)

(FRNCK1.FRNCK) 19MAY22

LAS VEGAS, NEVADA  
HARRY REID INTL (LAS)