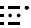


GRAYM SIX ARRIVAL

AL-626 (FAA)

BEDFORD, MASSACHUSETTS

BOSTON APP CON
124.4 279.6
BRADLEY APP CON
119.0 327.1
BED ATIS
124.6
BVY ATIS
119.2
LWM ATIS
126.75

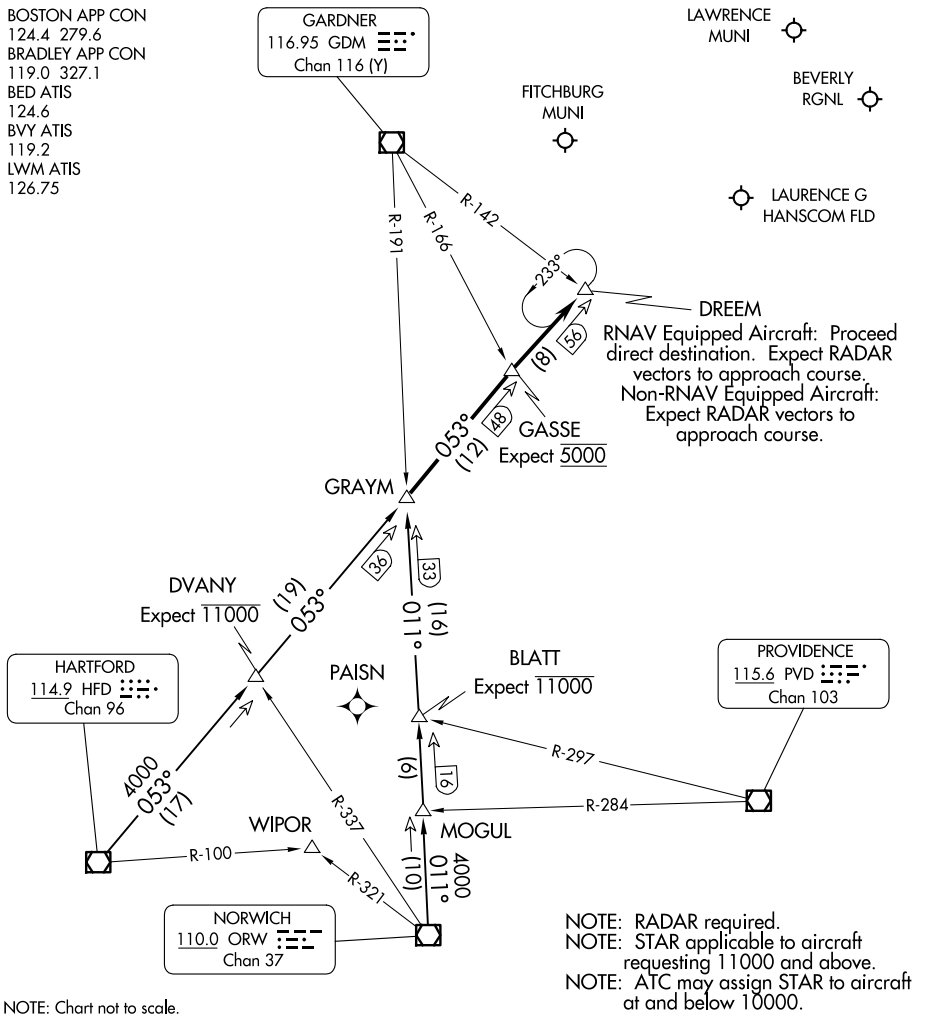
GARDNER
116.95 GDM 
Chan 116 (Y)

LAWRENCE MUNI 

FITCHBURG MUNI 

BEVERLY RGNL 

 LAURENCE G HANSCOM FLD



NE-1, 17 APR 2025 to 15 MAY 2025

NE-1, 17 APR 2025 to 15 MAY 2025

NOTE: Chart not to scale.

ARRIVAL ROUTE DESCRIPTION

HARTFORD TRANSITION (HFD.GRAYM6): From over HFD VOR/DME on HFD R-053 to GRAYM. Thence. . .

NORWICH TRANSITION (ORW.GRAYM6): From over ORW VOR/DME on ORW R-011 to GRAYM. Thence. . .

. . . . From over GRAYM on HFD R-053 to GASSE, then to DREAM, at DREAM:

RNAV EQUIPPED AIRCRAFT: Proceed direct destination expect radar vectors to approach course.

NON-RNAV EQUIPPED AIRCRAFT: Expect radar vectors to approach course.

GRAYM SIX ARRIVAL

BEDFORD, MASSACHUSETTS