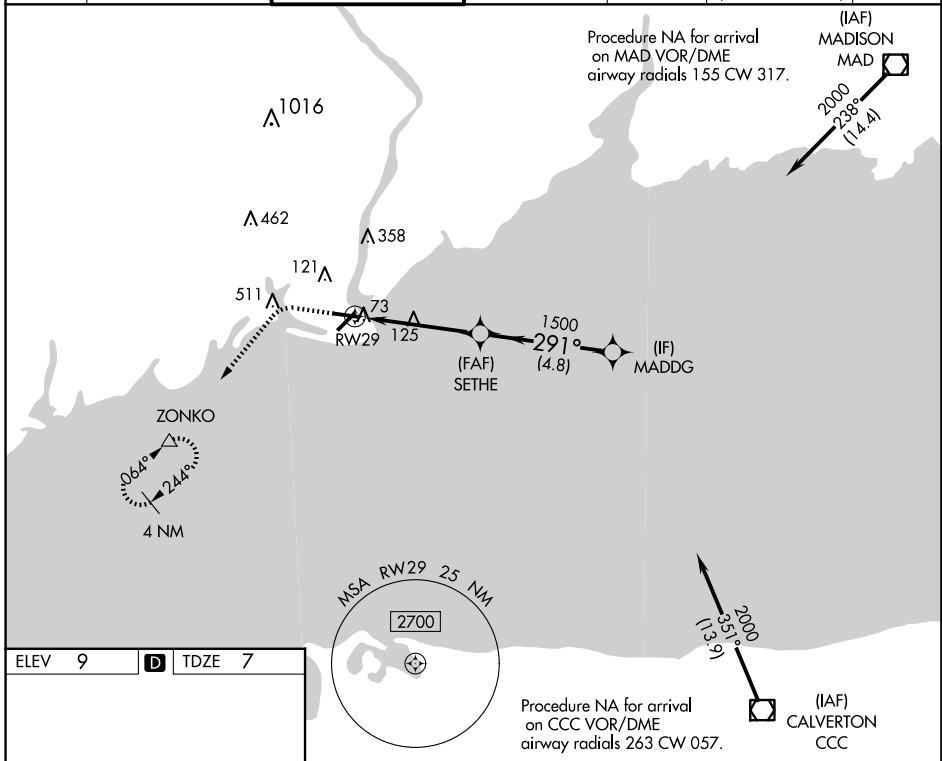


APP CRS 291°	Rwy Idg TDZE Apt Elev	4395 7 9
------------------------	-----------------------------	-------------------------------------

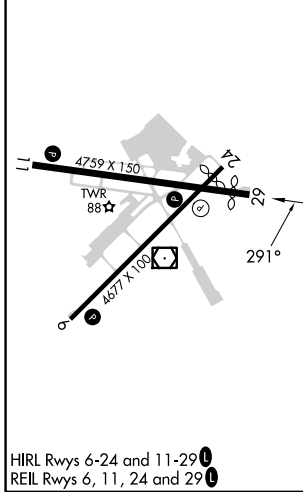
RNAV (GPS) RWY 29

BRIDGEPORT/SIKORSKY (BDR)

RNP APCH - GPS.		MISSED APPROACH: Climb to 500 then climbing left turn to 2000 direct ZONKO and hold.					
<p>▼ Rwy 29 helicopter visibility reduction below 1 SM NA.</p> <p>▲ Circling Rwy 11, 29 NA at night. Rwy 29 Straight-in minimums NA at night.</p>		BRIDGEPORT TOWER* 120.9 (CTAF) 257.8		GND CON 121.75 257.8	CLNC DEL 121.75	CLNC DEL 124.075 (When twr closed)	UNICOM 123.0



ELEV 9	D	TDZE 7
--------	----------	--------



500	2000	ZONKO	Visual Segment - Obstacles.	
↑	↶	△		
RWY 29		SETHE	MADDDG	
4.5 NM		1500	2000	
		4.8 NM		
CATEGORY	A	B	C	D
LNAV MDA	380-1		373 (400-1)	
CIRCLING	480-1	620-1	820-2½	820-2¾
	471 (500-1)	611 (700-1)	811 (900-2½)	811 (900-2¾)

NE-1, 17 APR 2025 to 15 MAY 2025

NE-1, 17 APR 2025 to 15 MAY 2025