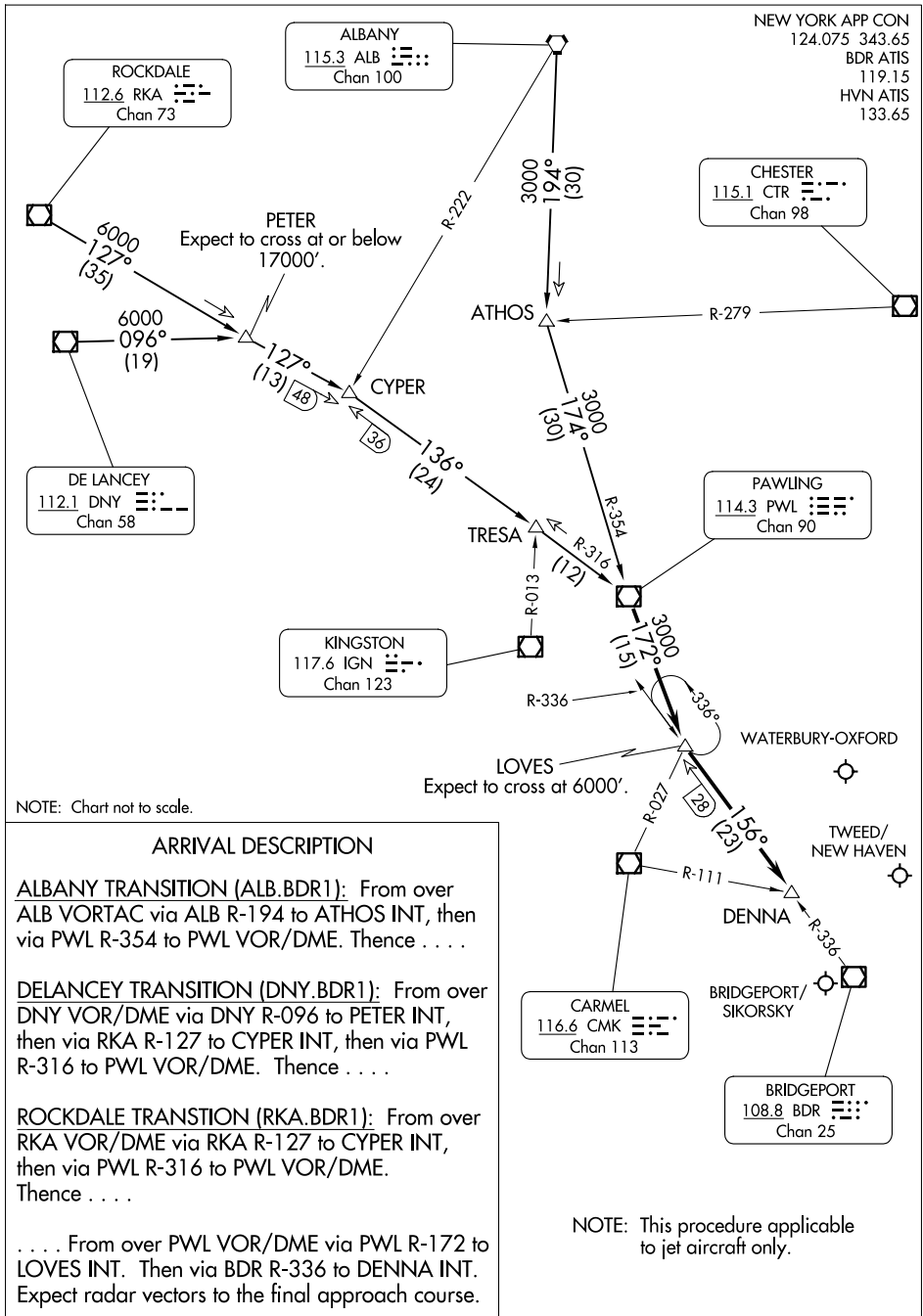


# BRIDGEPORT ONE ARRIVAL

AL-621 (FAA)

BRIDGEPORT, CONNECTICUT



NEW YORK APP CON  
124.075 343.65  
BDR ATIS  
119.15  
HVN ATIS  
133.65

ROCKDALE  
112.6 RKA  
Chan 73

ALBANY  
115.3 ALB  
Chan 100

CHESTER  
115.1 CTR  
Chan 98

DE LANCEY  
112.1 DNY  
Chan 58

KINGSTON  
117.6 IGN  
Chan 123

PAWLING  
114.3 PWL  
Chan 90

CARME  
116.6 CMK  
Chan 113

BRIDGEPORT  
108.8 BDR  
Chan 25

NOTE: Chart not to scale.

**ARRIVAL DESCRIPTION**

**ALBANY TRANSITION (ALB.BDR1):** From over ALB VORTAC via ALB R-194 to ATHOS INT, then via PWL R-354 to PWL VOR/DME. Thence . . . .

**DELANCEY TRANSITION (DNY.BDR1):** From over DNY VOR/DME via DNY R-096 to PETER INT, then via RKA R-127 to CYPER INT, then via PWL R-316 to PWL VOR/DME. Thence . . . .

**ROCKDALE TRANSITION (RKA.BDR1):** From over RKA VOR/DME via RKA R-127 to CYPER INT, then via PWL R-316 to PWL VOR/DME. Thence . . . .

. . . . From over PWL VOR/DME via PWL R-172 to LOVES INT. Then via BDR R-336 to DENNA INT. Expect radar vectors to the final approach course.

# BRIDGEPORT ONE ARRIVAL

BRIDGEPORT, CONNECTICUT

NE-1, 17 APR 2025 to 15 MAY 2025

NE-1, 17 APR 2025 to 15 MAY 2025