

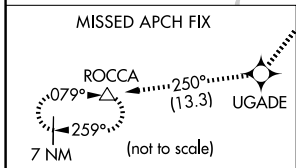
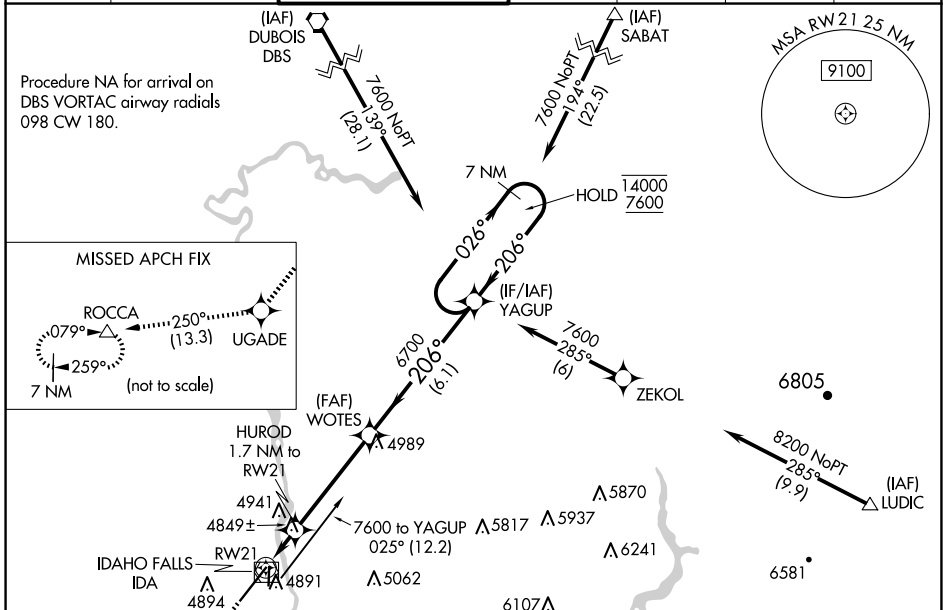
WAAS CH 40111 W21A	APP CRS 206°	Rwy Idg 9002 TDZE 4735 Apt Elev 4744
--	------------------------	---

RNAV (GPS) Y RWY 21

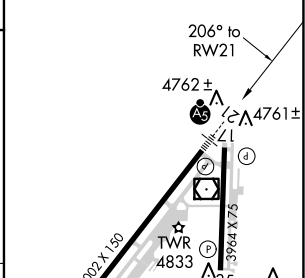
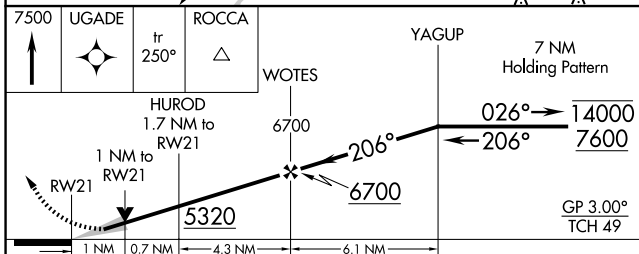
IDAHO FALLS RGNL (IDA)

RNP APCH-GPS.	MALSR 	MISSED APPROACH: Climb to 7500 direct UGADE and on track 250° to ROCCA and hold.
Circling to Rwy 35 NA at night. For uncompensated Baro-VNAV systems, LNAV/VNAV NA below -27°C or above 54°C. For inop ALS increase LNAV/VNAV visibility all to RVR 4500, and LNAV visibility Cats C and D to RVR 5500.		

ATIS 135.325	SALT LAKE CENTER 128.35 239.25	IDAHO FALLS TOWER * 118.5 (CTAF) 0 257.8	GND CON 121.7	CLNC DEL 121.7	GCO 121.725	UNICOM 122.95
------------------------	--	--	-------------------------	--------------------------	-----------------------	-------------------------



ELEV 4744	D TDZE 4735
-----------	--------------------



CATEGORY	A	B	C	D
LPV DA		4985/24	250 (300-½)	
LNAV/VNAV DA		5016/24	281 (300-½)	
LNAV MDA	5100/24	365 (400-½)	5100/35	365 (400-¾)
CIRCLING	5200-1 456 (500-1)	5300-1 556 (600-1)	5400-1¾ 656 (700-1¾)	5420-2¼ 676 (700-2¼)

REIL Rwy 3
HIRL Rwy 3-21
MIRL Rwy 17-35

NW-1, 17 APR 2025 to 15 MAY 2025

NW-1, 17 APR 2025 to 15 MAY 2025