

# VOR/DME-E

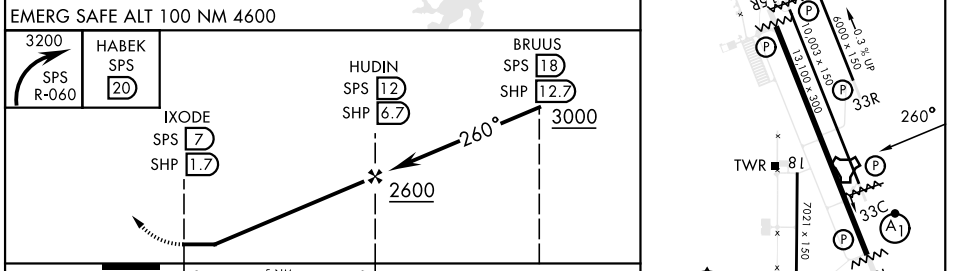
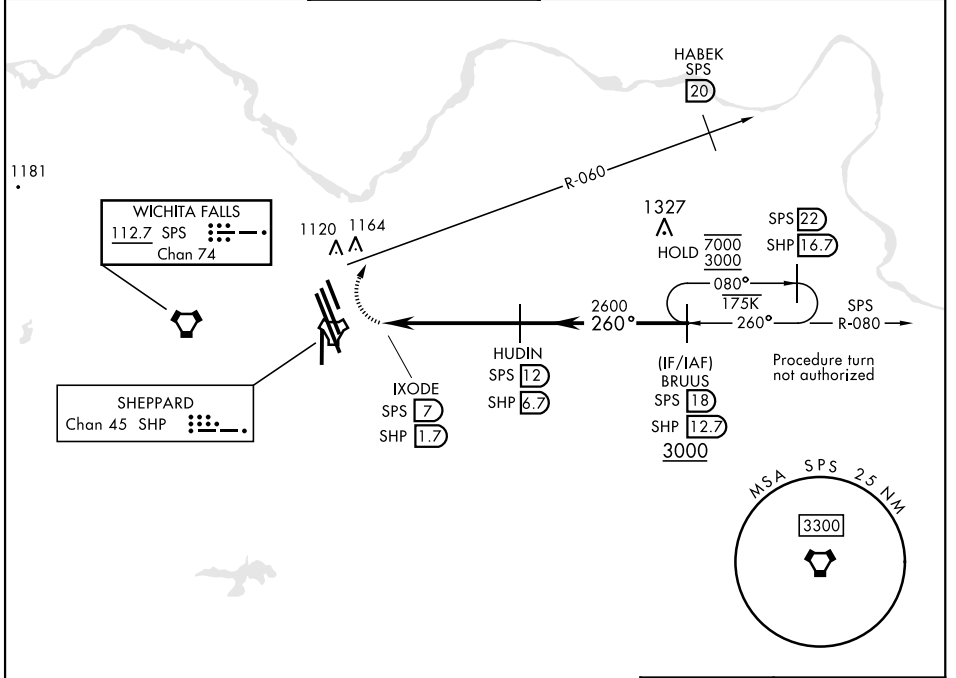
VORTAC SPS <b>112.7</b> Chan <b>74</b>	APCH CRS <b>260°</b>	Rwy Idg TDZE N/A Arprt Elev N/A <b>1019</b>	[USAF]	SHEPPARD AFB/WICHITA FALLS MUNI (KSPS)
--	-------------------------	---	--------	--

RADAR required

▼ \* Circling not authorized W of Rwy 15R-33L.

MISSED APPROACH: Climbing right turn to 3200, intcp SPS VORTAC R-060 to 20 DME (HABEK). Expect RADAR vectors.

ATIS ★ <b>132.05 269.9</b>	APP CON <b>118.2 269.025</b>	TOWER ★ <b>119.75 0 279.525</b> (CTAF)	GND CON <b>125.5 289.4</b>	CLNC DEL <b>121.2 282.225</b>	ASR
-------------------------------	---------------------------------	---	-------------------------------	----------------------------------	-----



CATEGORY	A	B	C	D	E
CIRCLING*	1480-17 $\frac{1}{8}$	461	(500-17 $\frac{1}{8}$ )	2100-3 1081	(1100-3)

HIRL all rwys  
REL Rwy 15L, 33R and 36

# VOR/DME-E

SC-2, 17 APR 2025 to 15 MAY 2025

SC-2, 17 APR 2025 to 15 MAY 2025