

RNAV (GPS) RWY 15R

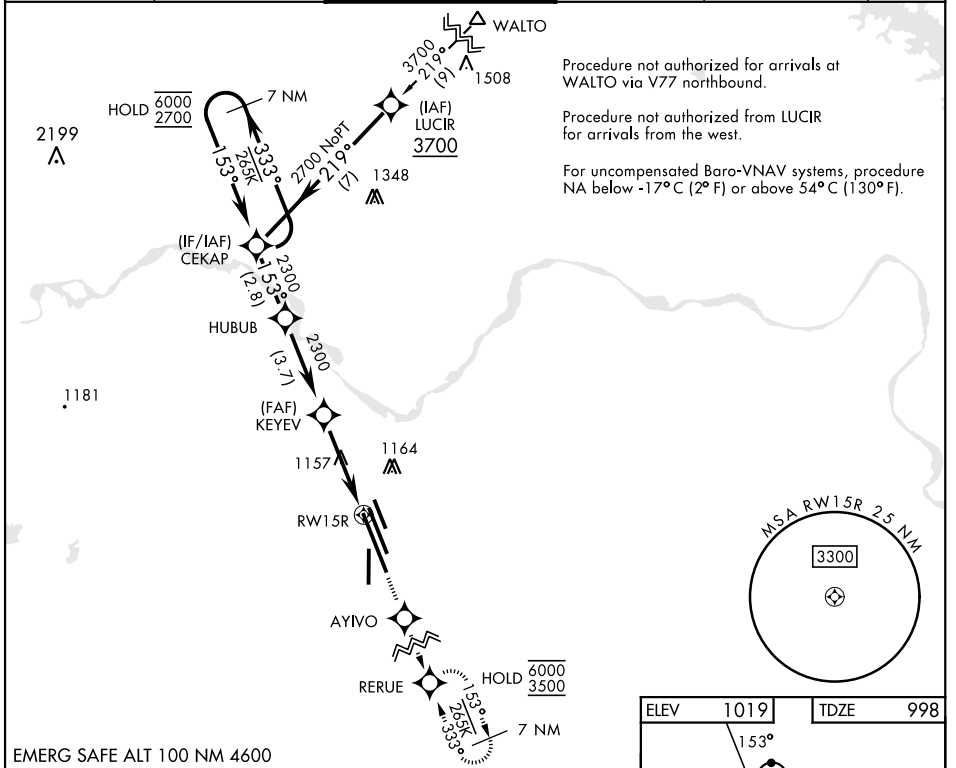
APCH CRS	Rwy ldg 13,100
153°	TDZE 998
	Arprt Elev 1019

[USAF]

SHEPPARD AFB/WICHITA FALLS MUNI (KSPS)

RNP APCH - GPS	MALSRL 	MISSED APPROACH: Climb to 3500 direct AYIVO and via 153° track to RERUE and hold.
<p>▼ * When ALS inop, increase CAT AB vis to 3/4 mile; CAT CDE vis to 7/8 mile. ** When ALS inop, increase CAT AB vis to 1 mile; CAT CDE vis to 1 1/4 miles. *** Circling not authorized West of Rwy 15R-33L.</p>		

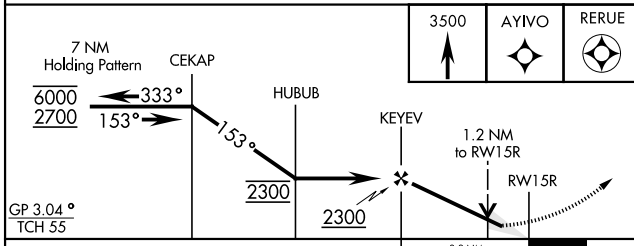
ATIS ★	APP CON	TOWER ★	GND CON	CLNC DEL	ASR
132.05 269.9	118.2 269.025	119.75 0 279.525 (CTAF)	125.5 289.4	121.2 282.225	



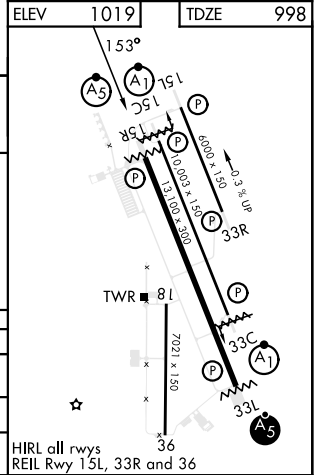
SC-2, 17 APR 2025 to 15 MAY 2025

SC-2, 17 APR 2025 to 15 MAY 2025

EMERG SAFE ALT 100 NM 4600



CATEGORY	A	B	C	D	E
LNAV/VNAV DA*	1249-1/2 251 (300-1/2)	1252-1/2 254 (300-1/2)	1260-1/2 262 (300-1/2)	1271-1/2 273 (300-1/2)	
LNAV MDA**	1420-1/2 401 (500-1)	422 461 (500-1)	1480-1/2 461 (500-1)	1420-3/4 422	422 1081 (1100-3)
CIRCLING***	1420-1 401 (500-1)	1480-1 461 (500-1)	1480-1 1/2 461 (500-1 1/2)	2100-3	1081 (1100-3)



RNAV (GPS) RWY 15R