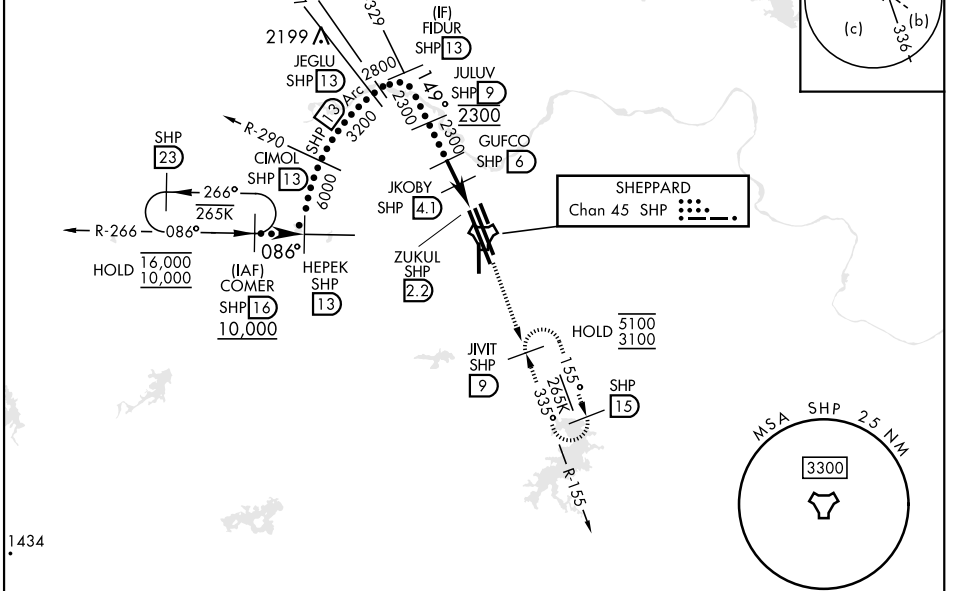
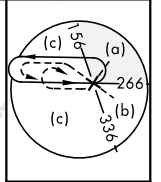


HI-TACAN RWY 15R

TACAN SHP Chan 45	APCH CRS 149°	Rwy ldg 13,100 TDZE: 998 Arprt Elev 1019	[USAF]	SHEPPARD AFB/WICHITA FALLS MUNI (KSPS)	
* When ALS inop, increase CAT CDE vis to 1 1/4 miles. ** Circling not authorized W of Rwy 15R-33L.				MALSR 	
ATIS* 132.05 269.9	APP CON 118.2 269.025	TOWER* 119.75 279.525 (CTAF)	GND CON 125.5 289.4	CLNC DEL 121.2 282.225	ASR

CAUTION:
Do not confuse parallel taxiway with Rwy 15R-33L.

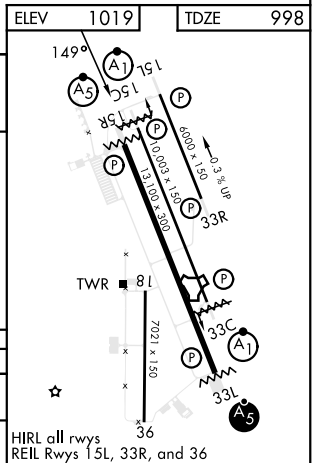


SC-2, 17 APR 2025 to 15 MAY 2025

SC-2, 17 APR 2025 to 15 MAY 2025

EMERG SAFE ALT 100 NM 4600

VGSI and descent angle not coincident.			3100 SHP R-155	JIVIT SHP 9
CATEGORY	C	D	E	
S-15R*	1420-3/4	422 (500-3/4)		
CIRCLING**	1480-1 1/2 461 (500-1 1/2)	2100-3	1081	(1100-3)



HI-TACAN RWY 15R