

WICHITA FALLS, TEXAS

# HI-ILS or LOC/DME Z RWY 33L

SHEPPARD AFB/  
WICHITA FALLS MUNI (KSPS)

LOC I-SPS <b>109.7</b>	APCH CRS <b>333°</b>	Rwy ldg 33L TDZE 33L Arprt Elev	<b>13,100</b> <b>1000</b> <b>1019</b>	33C <b>10,003</b> <b>989</b>
---------------------------	-------------------------	---------------------------------------	---	------------------------------------

[USAF]

### DME required

- \* When ALS inop, increase CAT CDE vis to 3/4 mile.
- \*\* When ALS inop, increase CAT CDE vis to 1 mile.
- \*\*\* Circling not authorized W of Rwy 15R-33L.

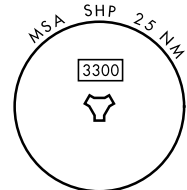
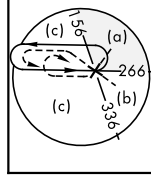
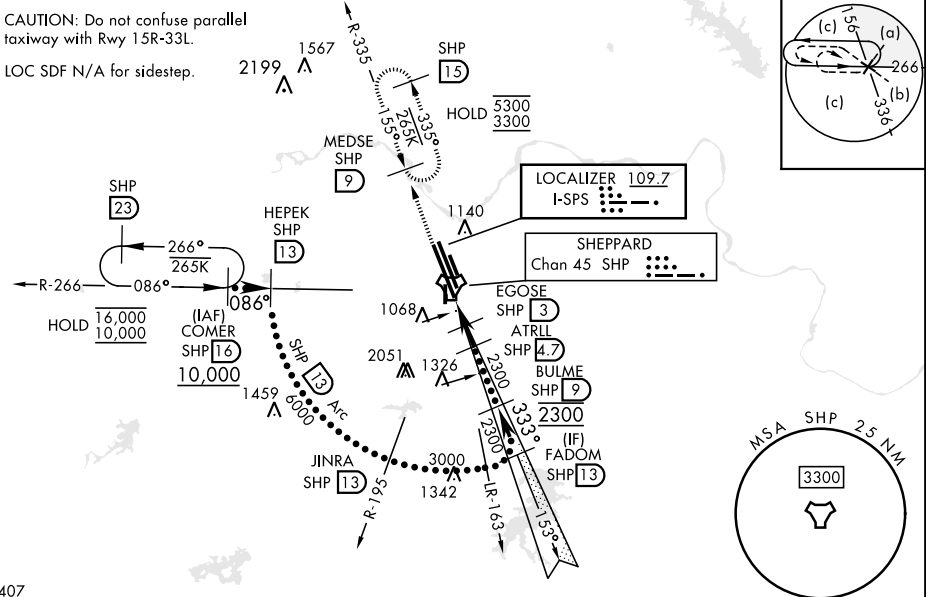


MISSED APPROACH: Climb and maintain 3300, intercept SHP TACAN R-335 to SHP R-335/9 DME (MEDSE) and hold.

ATIS * <b>132.05 269.9</b>	APP CON <b>118.2 269.025</b>	TOWER * <b>119.750 279.525</b> (CTAF)	GND CON <b>125.5 289.4</b>	CLNC DEL <b>121.2 282.225</b>	ASR
-------------------------------	---------------------------------	--	-------------------------------	----------------------------------	-----

CAUTION: Do not confuse parallel taxiway with Rwy 15R-33L.

LOC SDF N/A for sidestep.



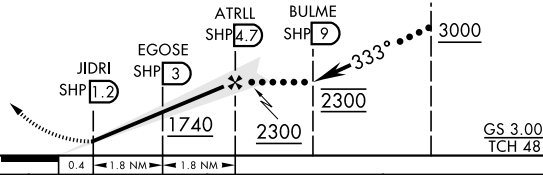
SC-2, 17 APR 2025 to 15 MAY 2025

SC-2, 17 APR 2025 to 15 MAY 2025

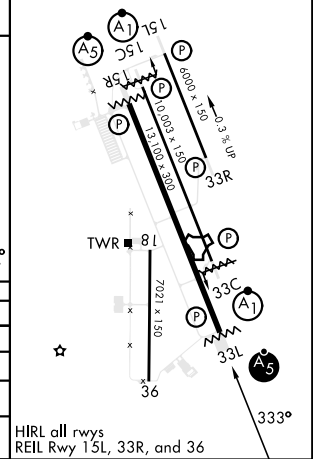
1407

### EMERG SAFE ALT 100 NM 4600

3300 Intcp SHP R-335	MEDSE SHP 9	VGSI and ILS glidepath not coincident (VGSI Angle 3.00/TCH 56).	Intcp lczr FADOM SHP 13
----------------------	-------------	---	-------------------------



ELEV 1019	TDZE 33L 1000
	TDZE 33C 989



CATEGORY	C	D	E
S-ILS 33L *	1200-1/2	200 (200-1/2)	
S-LOC 33L **	1340-1/2	340 (400-1/2)	
SIDESTEP ** 33C	1440-7/8	451 (500-7/8)	
*** CIRCLING	1480-1 1/2 461 (500-1 1/2)	2100-3	1081 (1100-3)

WICHITA FALLS, TEXAS

33°59'N-98°30'W

SHEPPARD AFB/WICHITA FALLS MUNI (KSPS)

Amdt 8 23JAN25

# HI-ILS or LOC/DME Z RWY 33L