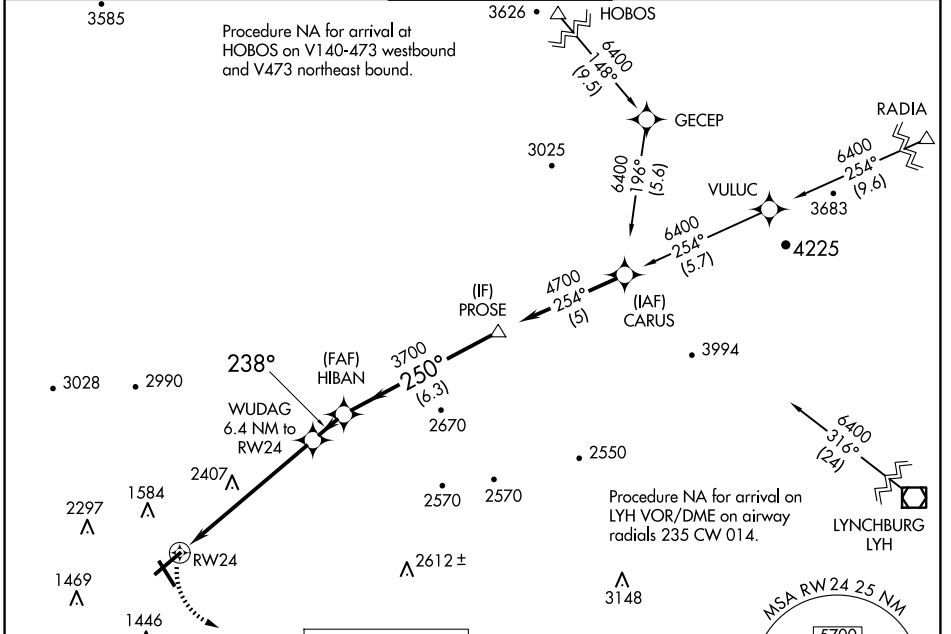


WAAS CH 99522 W24A	APP CRS 238°	Rwy Idg TDZE Apt Elev	6010 1170 1175
--	------------------------	-----------------------------	---

RNAV (GPS) Y RWY 24

ROANOKE/BLACKSBURG RGNL (WOODRUM FLD) (R.O.A)

RNP APCH.		<p>⚠ Circling NA northwest of Rwy 6-24. Rwy 24 helicopter visibility reduction below 3/4 SM NA.</p>		<p>MISSED APPROACH: Climbing left turn to 4000 direct MONAT and hold.</p>	
ATIS 132.375	ROANOKE APP CON 126.9 339.8	ROANOKE TOWER 118.3 257.8	GND CON 121.9 257.8	CLNC DEL 119.7	



NE-3, 17 APR 2025 to 15 MAY 2025

NE-3, 17 APR 2025 to 15 MAY 2025

ELEV 1175	D	TDZE 1170	<p>MISSED APCH FIX MONAT 4078° 258° 4 NM</p>																					
<p>238° to RWY 24</p>			<p>4000 MONAT Visual Segment - Obstacles.</p>																					
<p>REIL Rwy 6 and 24 HIRL Rwy 6-24 and 16-34</p>			<table border="1"> <thead> <tr> <th>CATEGORY</th> <th>A</th> <th>B</th> <th>C</th> <th>D</th> </tr> </thead> <tbody> <tr> <td>LP MDA</td> <td>2500-1 1/4 1330 (1400-1 1/4)</td> <td>2500-1 1/2 1330 (1400-1 1/2)</td> <td>2500-3</td> <td>1330 (1400-3)</td> </tr> <tr> <td>LNAV MDA</td> <td>3000-1 1/4 1830 (1900-1 1/4)</td> <td>3000-1 1/2 1830 (1900-1 1/2)</td> <td>3000-3</td> <td>1830 (1900-3)</td> </tr> <tr> <td>C CIRCLING</td> <td>3000-1 1/4 1825 (1900-1 1/4)</td> <td>3000-1 1/2 1825 (1900-1 1/2)</td> <td>3000-3</td> <td>1825 (1900-3)</td> </tr> </tbody> </table>		CATEGORY	A	B	C	D	LP MDA	2500-1 1/4 1330 (1400-1 1/4)	2500-1 1/2 1330 (1400-1 1/2)	2500-3	1330 (1400-3)	LNAV MDA	3000-1 1/4 1830 (1900-1 1/4)	3000-1 1/2 1830 (1900-1 1/2)	3000-3	1830 (1900-3)	C CIRCLING	3000-1 1/4 1825 (1900-1 1/4)	3000-1 1/2 1825 (1900-1 1/2)	3000-3	1825 (1900-3)
CATEGORY	A	B	C	D																				
LP MDA	2500-1 1/4 1330 (1400-1 1/4)	2500-1 1/2 1330 (1400-1 1/2)	2500-3	1330 (1400-3)																				
LNAV MDA	3000-1 1/4 1830 (1900-1 1/4)	3000-1 1/2 1830 (1900-1 1/2)	3000-3	1830 (1900-3)																				
C CIRCLING	3000-1 1/4 1825 (1900-1 1/4)	3000-1 1/2 1825 (1900-1 1/2)	3000-3	1825 (1900-3)																				

RNAV (GPS) Y RWY 24