

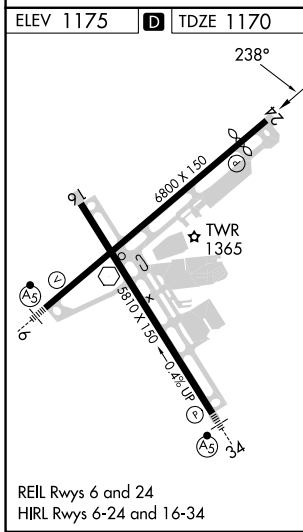
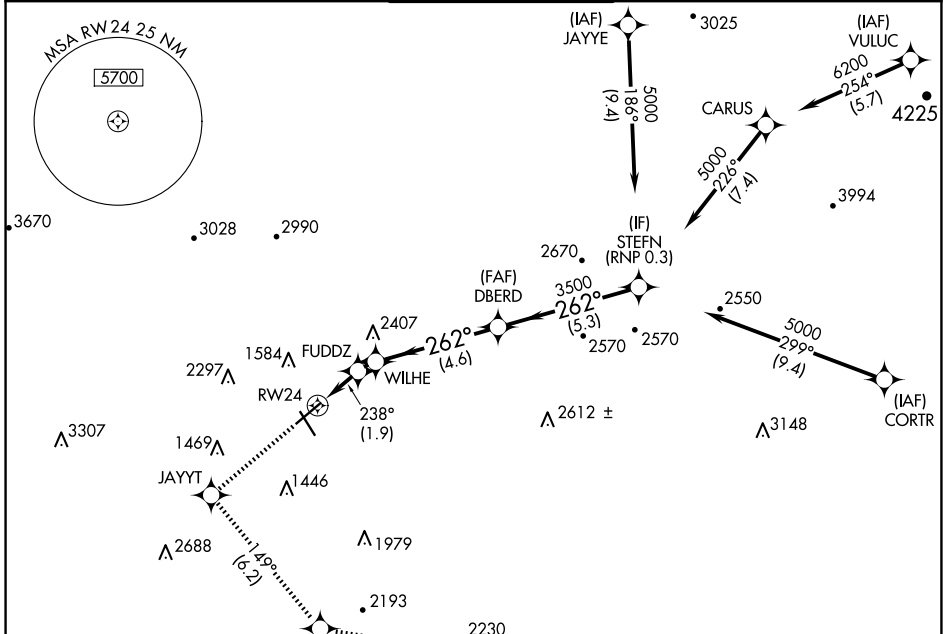
APP CRS	Rwy Idg	<b>6010</b>
<b>238°</b>	TDZE	<b>1170</b>
	Apt Elev	<b>1175</b>

# RNAV (RNP) Z RWY 24

ROANOKE/BLACKSBURG RGNL (WOODRUM FLD) (R.O.A)

RNP AR APCH - GPS.	MISSED APPROACH: Climb to 4000 direct JAYYT and on track 149° to TPUCK and on track 107° to MONAT and hold. # Missed approach requires minimum climb of 230 feet per NM to 3200.
For uncompensated Baro-VNAV systems, procedure NA below -14°C or above 54°C. -13°C	

ATIS <b>132.375</b>	ROANOKE APP CON <b>126.9 339.8</b>	ROANOKE TOWER <b>118.3 257.8</b>	GND CON <b>121.9 257.8</b>	CLNC DEL <b>119.7</b>
------------------------	---------------------------------------	-------------------------------------	-------------------------------	--------------------------



ELEV 1175	<b>D</b>	TDZE 1170	TPUCK MONAT		
4000	JAYYT	tr 149°	TPUCK	tr 107°	MONAT
	FUDDZ	1815	WILHE	2045	3500
	DBERD	3500	STEFN	5000	
	TPUCK	107°	MONAT	107°	258°
	MONAT	4 NM			
	GP 3.00	TCH 55			
	1.9 NM	0.7 NM	4.6 NM	5.3 NM	
CATEGORY	A	B	C	D	
# RNP 0.15 DA		1491-1	321 (400-1)		
RNP 0.30 DA		1633-1½	463 (500-1½)		

REIL Rws 6 and 24  
HIRL Rws 6-24 and 16-34

ROANOKE/BLACKSBURG RGNL (WOODRUM FLD) (R.O.A)  
37°20'N-79°59'W

# RNAV (RNP) Z RWY 24

NE-3, 17 APR 2025 to 15 MAY 2025

NE-3, 17 APR 2025 to 15 MAY 2025