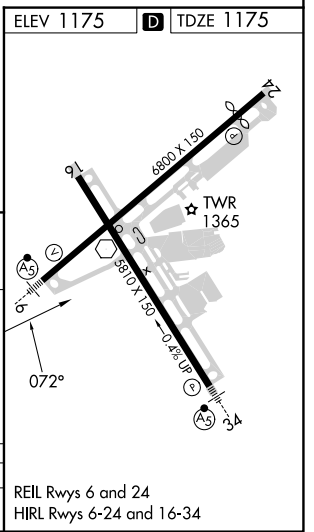
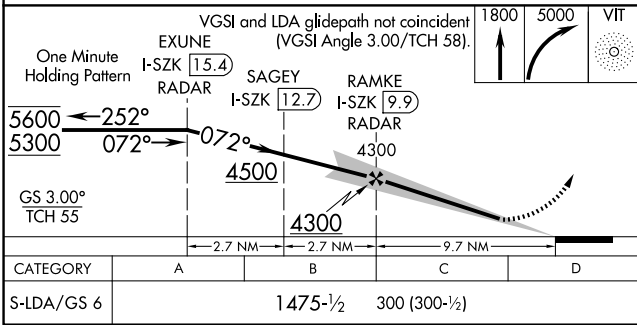
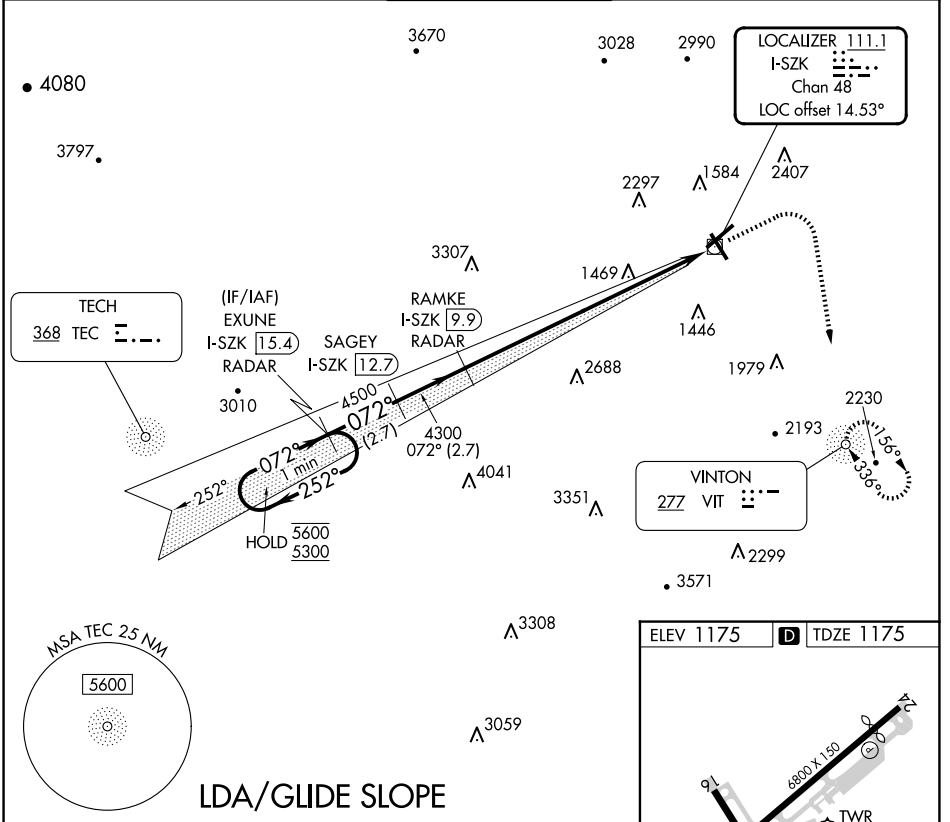


LOC/DME I-SZK 111.1 Chan 48	APP CRS 072°	Rwy Idg 6800 TDZE 1175 Apt Elev 1175
---	------------------------	---

LDA Z RWY 6

ROANOKE/BLACKSBURG RGNL (WOODRUM FLD) (R.O.A)

ADF required. RADAR required for procedure entry.		MALSR		MISSED APPROACH: Climb to 1800 then climbing right turn to 5000 direct VIT NDB and hold, continue climb-in-hold to 5000. Missed approach requires minimum climb of 350 feet per NM to 3600.	
-13°C For inop ALS, increase S-LDA/GS 6 visibility all Cats to 7/8 SM.		AS			
ATIS 132.375	ROANOKE APP CON 126.9 339.8	ROANOKE TOWER 118.3 257.8	GND CON 121.9 257.8	CLNC DEL 119.7	



NE-3, 17 APR 2025 to 15 MAY 2025

NE-3, 17 APR 2025 to 15 MAY 2025