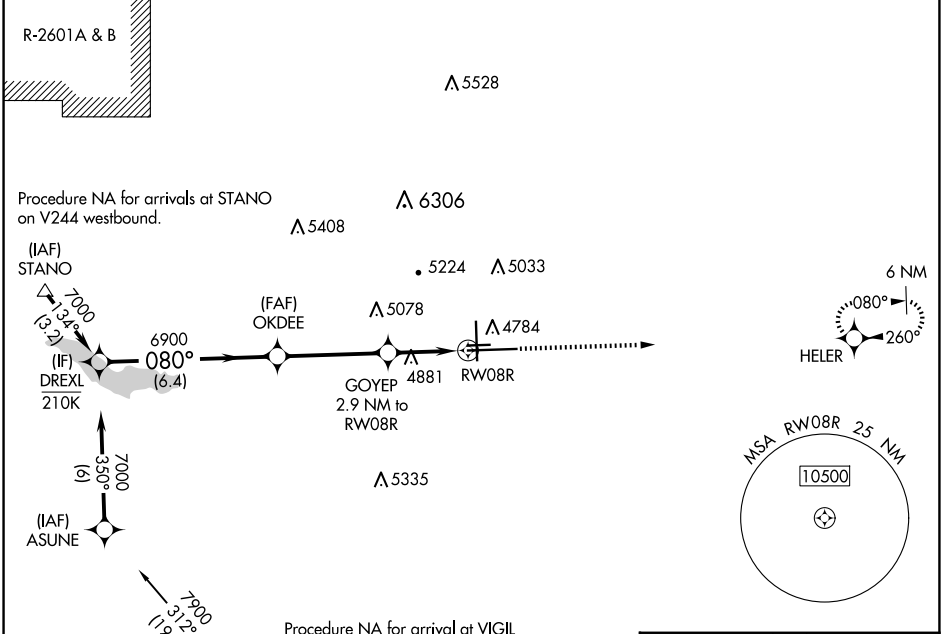


WAAS CH <b>70531</b> <b>W08A</b>	APP CRS <b>080°</b>	Rwy Idg TDZE Apt Elev	<b>10496</b> <b>4671</b> <b>4729</b>
--	------------------------	-----------------------------	--

# RNAV (GPS) RWY 8R

PUEBLO MEML (PUB)

RNP APCH-GPS.			MALSR	MISSED APPROACH: Climb to 7000 direct HELER and hold.		
<p><b>V</b> For uncompensated Baro-VNAV systems, LNAV/VNAV NA below -22°C or above 54°C. For inop ALS, increase LNAV/VNAV visibility to 3/8 SM.</p>						
ATIS <b>125.25</b>	DENVER APP CON ★ <b>120.1 290.5</b>	PUEBLO TOWER ★ <b>119.1 (CTAF) 0 257.8</b>	GND CON <b>121.9</b>	CLNC DEL <b>120.9</b>	UNICOM <b>122.95</b>	



SW-1, 17 APR 2025 to 15 MAY 2025

SW-1, 17 APR 2025 to 15 MAY 2025

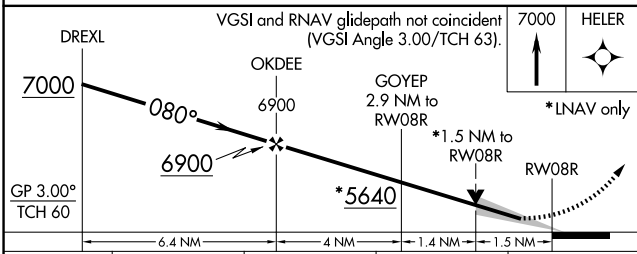
Procedure NA for arrivals at STANO on V244 westbound.

(IAF) STANO  
7000 (3.3)  
6900 (6.4)  
7000 (6)  
350°

(FAF) OKDEE  
A 5078  
GOYEP 4881  
2.9 NM to RWY08R  
A 5335

Procedure NA for arrival at VIGIL on V83-611 southbound.

(IAF) ASUNE  
7000 (1.9)  
7000 (3.4)  
350°



ELEV 4729	<b>D</b>	TDZE 4671
-----------	----------	-----------

CATEGORY	A	B	C	D
LPV DA	4871-1/2		200 (200-1/2)	
LNAV/VNAV DA	4982-1/2		311 (300-1/2)	
LNAV MDA	5200-1/2	529 (500-1/2)	5200-1	529 (500-1)
<b>C</b> CIRCLING	5340-1	611 (700-1)	5580-2 1/2 851 (900-2 1/2)	5800-3 1071 (1100-3)

