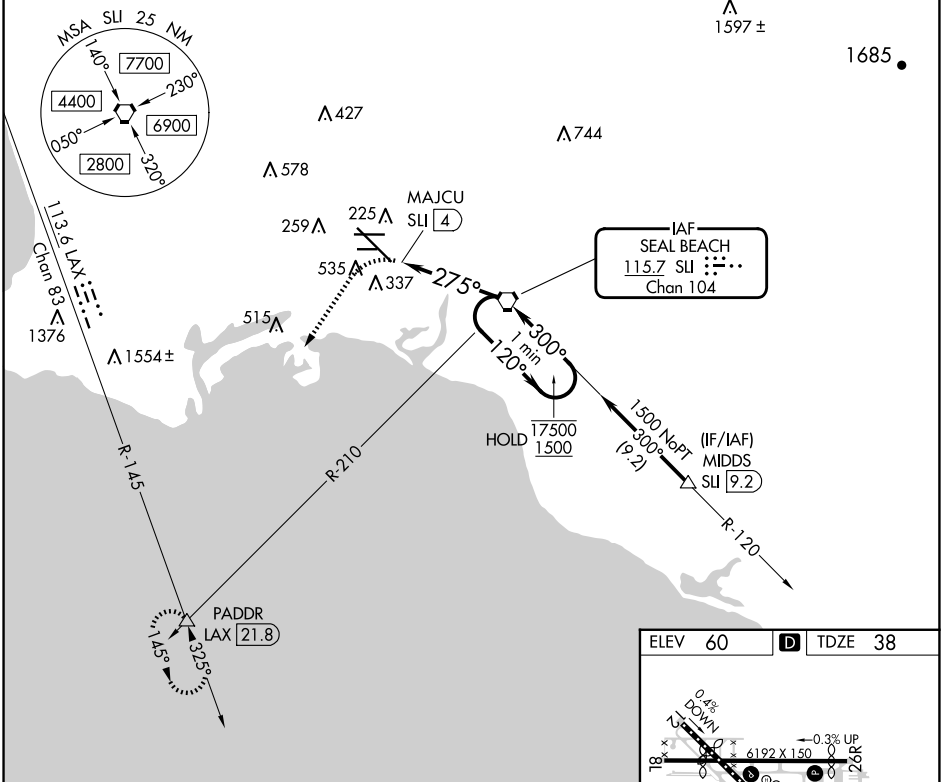


VORTAC SU 115.7 Chan 104	APP CRS 275°	Rwy ldg TDZE 38 Apt Elev 60	7414
--	------------------------	---	-------------

VOR or TACAN RWY 30

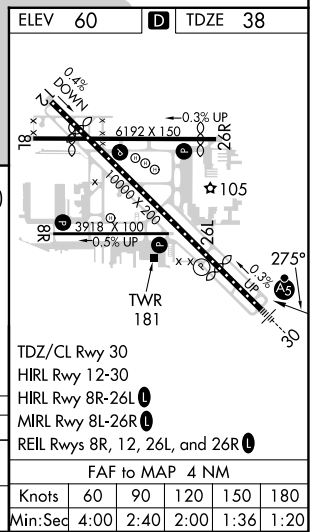
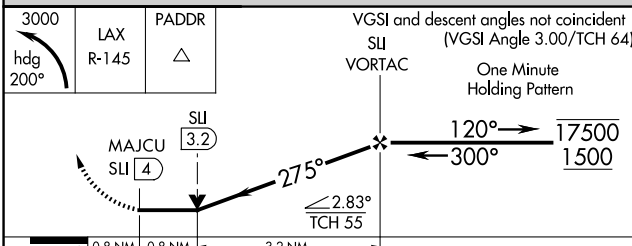
LONG BEACH (DAUGHERTY FLD) (LGB)

<p>▽ Rwy 30 helicopter visibility reduction below RVR 4000 NA. △ Inop table does not apply.</p>	<p>MALSR</p>		<p>MISSED APPROACH: Climbing left turn to 3000 on heading 200° and LAX VORTAC R-145 to PADDR INT/LAX 21.8 DME and hold.</p>	
	<p>ATIS 127.75</p>	<p>SOCAL APP CON 125.35 316.125</p>	<p>LONG BEACH TOWER* 120.5 257.6 (Rwy 12) 119.4 (CTAF) 0 257.6 (Rwy 30)</p>	<p>GND CON 133.0 257.6</p>
<p>UNICOM 122.95</p>				



SW-3, 17 APR 2025 to 15 MAY 2025

SW-3, 17 APR 2025 to 15 MAY 2025



CATEGORY	A	B	C	D
S-30	600/55 562 (600-1)		600-1 5/8 562 (600-1 1/8)	
CIRCLING	840-1 780 (800-1)		840-2 1/4 780 (800-2 1/4)	840-2 1/2 780 (800-2 1/2)