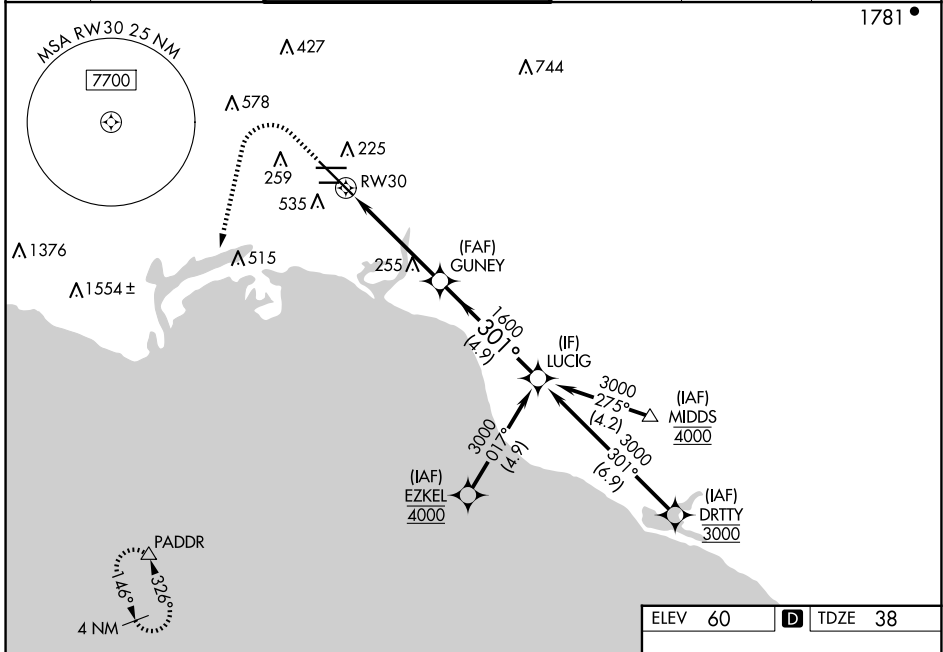


WAAS CH <b>99521</b> <b>W30A</b>	APP CRS <b>301°</b>	Rwy Idg TDZE Apt Elev	<b>7414</b> <b>38</b> <b>60</b>
----------------------------------------	------------------------	-----------------------------	---------------------------------------

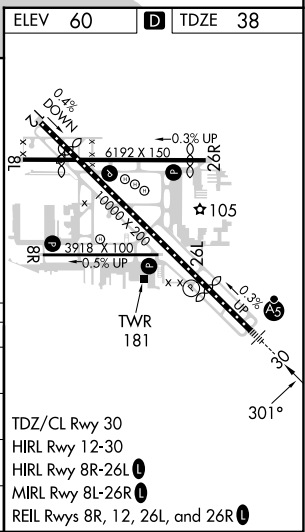
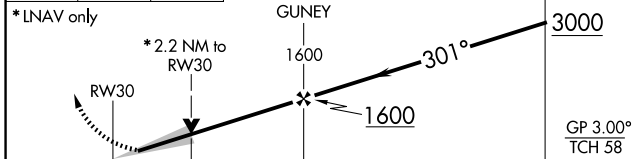
# RNAV (GPS) Z RWY 30

LONG BEACH (DAUGHERTY FLD) (LGB)

RNP APCH. ▼ For uncompensated Baro-VNAV systems, LNAV/VNAV NA below 4°C or above 54°C. For inop ALS, increase LNAV Cat C and D visibility to 1½ SM.		MALSR 	MISSED APPROACH: Climb to 800 then climbing left turn to 3000 direct PADDR and hold		
ATIS <b>127.75</b>	SOCAL APP CON <b>125.35 316.125</b>	LONG BEACH TOWER* <b>120.5 257.6</b> (Rwy 12) <b>119.4</b> (CTAF) <b>257.6</b> (Rwy 30)	GND CON <b>133.0 257.6</b>	CLNC DEL <b>118.15</b>	UNICOM <b>122.95</b>



800	3000	PADDR	VGSI and RNAV glidepath not coincident (VGSI Angle 3.00/TCH 64).
-----	------	-------	------------------------------------------------------------------



CATEGORY	A	B	C	D
LPV DA	261/18 223 (300-½)			
LNAV/VNAV DA	568/55 530 (600-1)			
LNAV MDA	520/24 482 (500-½)	520/50 482 (500-1)		
<b>C</b> CIRCLING	840-1 780 (800-1)	840-1¾ 780 (800-1¾)		

TDZ/CL Rwy 30  
HIRL Rwy 12-30  
HIRL Rwy 8R-26L  
MIRL Rwy 8L-26R  
REIL Rws 8R, 12, 26L, and 26R

SW-3, 17 APR 2025 to 15 MAY 2025

SW-3, 17 APR 2025 to 15 MAY 2025