

# ANAHEIM ONE DEPARTURE

AL-236 (FAA)

LONG BEACH (DAUGHERTY FLD) (LGB)

LONG BEACH, CALIFORNIA

## TOP ALTITUDE: ASSIGNED BY ATC

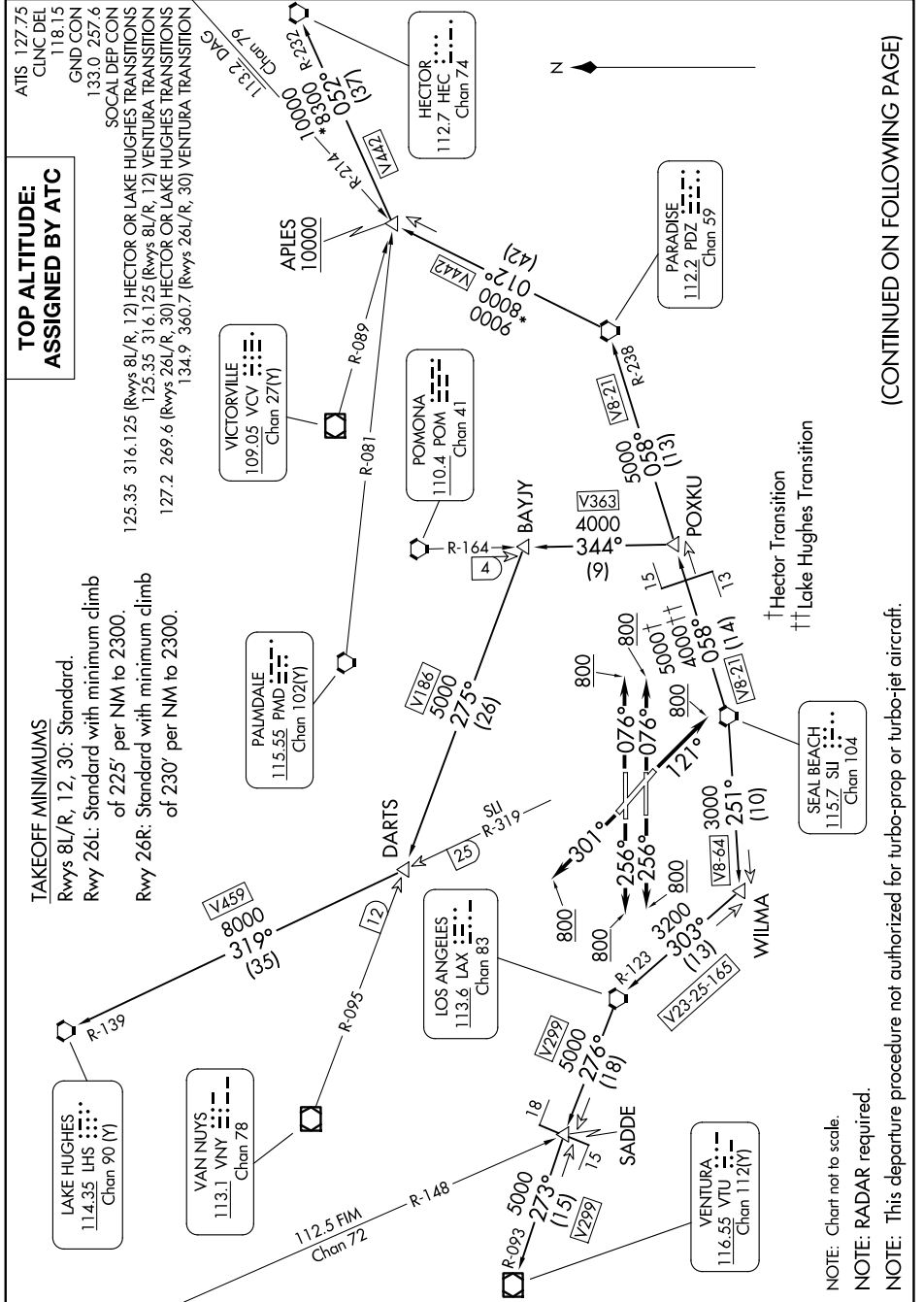
## TAKEOFF MINIMUMS

Rwys 8/L/R, 12, 30: Standard.

Rwy 26L: Standard with minimum climb of 225' per NM to 2300.

Rwy 26R: Standard with minimum climb of 230' per NM to 2300.

ATIS 127.75  
CLNC DEL 118.15  
GND CON 133.0 257.6  
SOCAL DEP CON  
125.35 316.125 (Rwys 8/L/R, 12) HECTOR OR LAKE HUGHES TRANSITIONS  
125.35 316.125 (Rwys 8/L/R, 12) VENTURA TRANSITION  
127.2 269.6 (Rwys 26/L/R, 30) HECTOR OR LAKE HUGHES TRANSITIONS  
134.9 360.7 (Rwys 26/L/R, 30) VENTURA TRANSITION



(CONTINUED ON FOLLOWING PAGE)

SW-3, 17 APR 2025 to 15 MAY 2025

SW-3, 17 APR 2025 to 15 MAY 2025

# ANAHEIM ONE DEPARTURE

LONG BEACH, CALIFORNIA

LONG BEACH (DAUGHERTY FLD) (LGB)

NOTE: Chart not to scale.  
NOTE: RADAR required.  
NOTE: This departure procedure not authorized for turbo-prop or turbo-jet aircraft.