

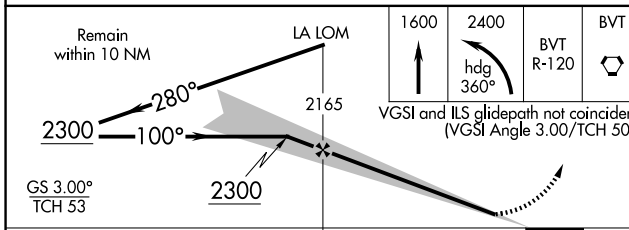
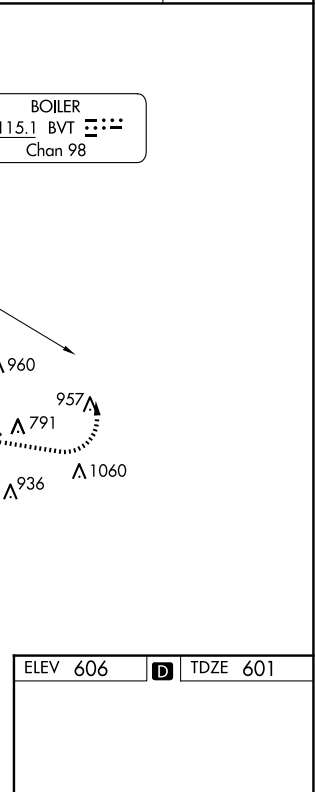
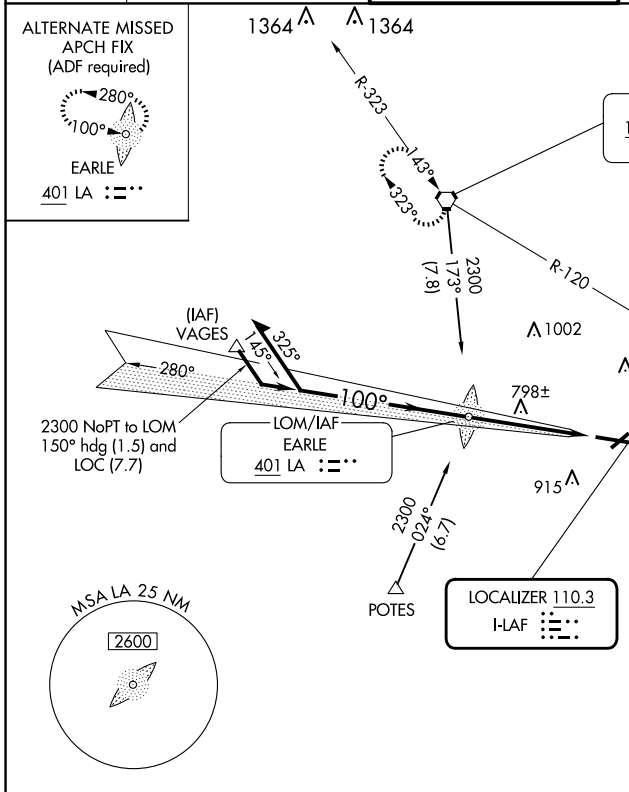
LOC I-LAF <b>110.3</b>	APP CRS <b>100°</b>	Rwy Idg <b>6600</b> TDZE <b>601</b> Apt Elev <b>606</b>
---------------------------	------------------------	---

# ILS or LOC RWY 10

PURDUE UNIVERSITY (LAF)

	Circling Rwy 23 NA at night.		MISSED APPROACH: Climb to 1600 then climbing left turn to 2400 on heading 360° and BVT VORTAC R-120 to BVT VORTAC and hold.
--	------------------------------	--	---

ATIS <b>127.75</b>	GRISSOM APP CON * <b>123.85 291.675</b>	LAFAYETTE TOWER * <b>119.6 (CTAF) 0 343.625</b>	GND CON <b>121.9 343.625</b>	UNICOM <b>122.95</b>
-----------------------	--	--	---------------------------------	-------------------------



CATEGORY	A	B	C	D
S-ILS 10	801-½ 200 (200-½)			
S-LOC 10	1060-½	459 (500-½)	1060-¾ 459 (500-¾)	1060-1 459 (500-1)
CIRCLING	1160-1	554 (600-1)	1320-2 714 (800-2)	1420-2¾ 814 (900-2¾)

HIRL Rwy 10-28	
REIL Rwys 5, 23 and 28	
MIRL Rwy 5-23	
FAF to MAP 4.7 NM	
Knots	60 90 120 150 180
Min:Sec	4:42 3:08 2:21 1:53 1:34

EC-2, 17 APR 2025 to 15 MAY 2025

EC-2, 17 APR 2025 to 15 MAY 2025