

KIDDZ FIVE ARRIVAL (RNAV) Transition Routes

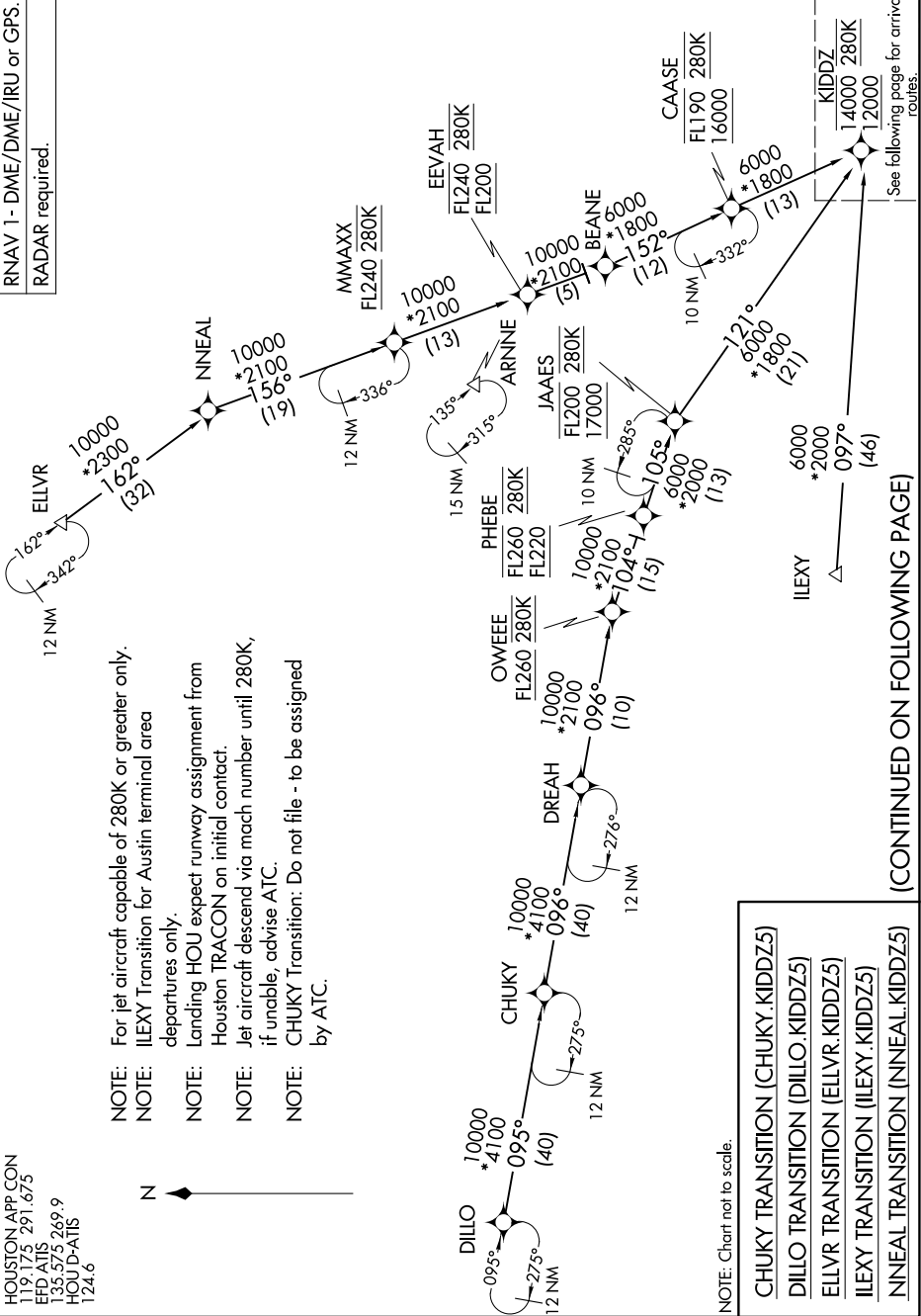
HOUSTON, TEXAS

SC-5, 17 APR 2025 to 15 MAY 2025

HOUSTON APP CON
 119.175 291.675
 EFD-ATS
 135.575 269.9
 HOU-D-ATS
 124.6

RNAV 1- DME/DME/IRU or GPS.
 RADAR required.

- NOTE: For jet aircraft capable of 280K or greater only.
- NOTE: ILEXY Transition for Austin terminal area departures only.
- NOTE: Landing HOU expect runway assignment from Houston TRACON on initial contact.
- NOTE: Jet aircraft descend via mach number until 280K, if unable, advise ATC.
- NOTE: CHUKY Transition: Do not file - to be assigned by ATC.



NOTE: Chart not to scale.

- CHUKY TRANSITION (CHUKY.KIDDZ5)
- DILLO TRANSITION (DILLO.KIDDZ5)
- ELLVYR TRANSITION (ELLVYR.KIDDZ5)
- ILEXY TRANSITION (ILEXY.KIDDZ5)
- NINEAL TRANSITION (NINEAL.KIDDZ5)

(CONTINUED ON FOLLOWING PAGE)

SC-5, 17 APR 2025 to 15 MAY 2025

KIDDZ FIVE ARRIVAL (RNAV) Transition Routes

HOUSTON, TEXAS