

| | | |
|------------------------|-----------------------------|---|
| APP CRS 271° | Rwy Idg TDZE Apt Elev | 9000 3852 3877 |
|------------------------|-----------------------------|---|

RNAV (RNP) Z RWY 27

HELENA RGNL (HLN)

RNP AR APCH - GPS.

⚠ Inop table does not apply to RNP 0.30 DA. For uncompensated Baro-VNAV systems, procedure NA below -28°C or above 54°C. For inop ALS, increase RNP 0.13 DA* visibility all Cats to ¾ SM, RNP 0.30 DA* visibility all Cats to 1¾ SM.

⚠ -17°C

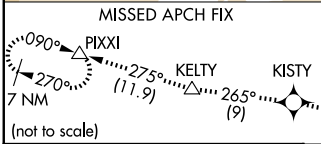
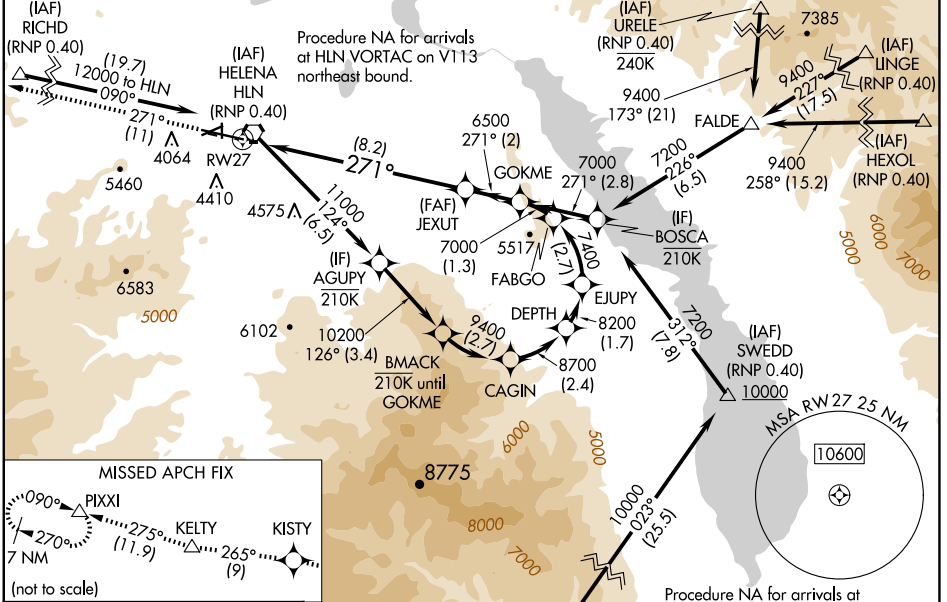
MALSRL

⚠ MISSED APPROACH: Climb to 12000 on the RNAV missed approach route to PIXXI and hold, continue climb-in-hold to 12000.

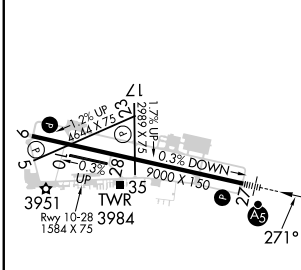
*Missed approach requires minimum climb of 280 feet per NM to 7800.

#Missed approach requires minimum climb of 375 feet per NM to 6300.

| | | | | |
|----------------------|--|---|-------------------------|-------------------------|
| ATIS 120.4 | HELENA APP CON * 119.5 229.4 | HELENA TOWER * 118.3 (CTAF) 257.8 | GND CON 121.9 | UNICOM 122.95 |
|----------------------|--|---|-------------------------|-------------------------|



| | | |
|-----------|----------|-----------|
| ELEV 3877 | D | TDZE 3852 |
|-----------|----------|-----------|



| | | | | | | |
|---|-------|---------|--------|---------|-------|--------------------|
| 12000 | KISTY | tr 265° | KELTY | tr 275° | PIXXI | GOKME |
| tr 271° | ⬠ | △ | △ | △ | △ | 7000 |
| See planview for multiple IF locations. | | | | | | GP 3.00° TCH 55 |
| RW27 | | | 8.2 NM | | 2 NM | |

| CATEGORY | A | B | C | D |
|--------------|---|--------|---------------|---|
| RNP 0.13 DA* | | 4172-½ | 320 (300-½) | |
| RNP 0.20 DA# | | 4303-¾ | 451 (500-¾) | |
| RNP 0.30 DA# | | 4353-1 | 501 (500-1) | |
| RNP 0.30 DA | | 4866-4 | 1014 (1000-4) | |

REIL Rws 9, 17, and 35

MIRL Rws 5-23 and 17-35

HIRL Rwy 9-27

NW-1, 17 APR 2025 to 15 MAY 2025

NW-1, 17 APR 2025 to 15 MAY 2025

AUTHORIZATION REQUIRED