

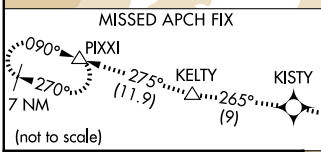
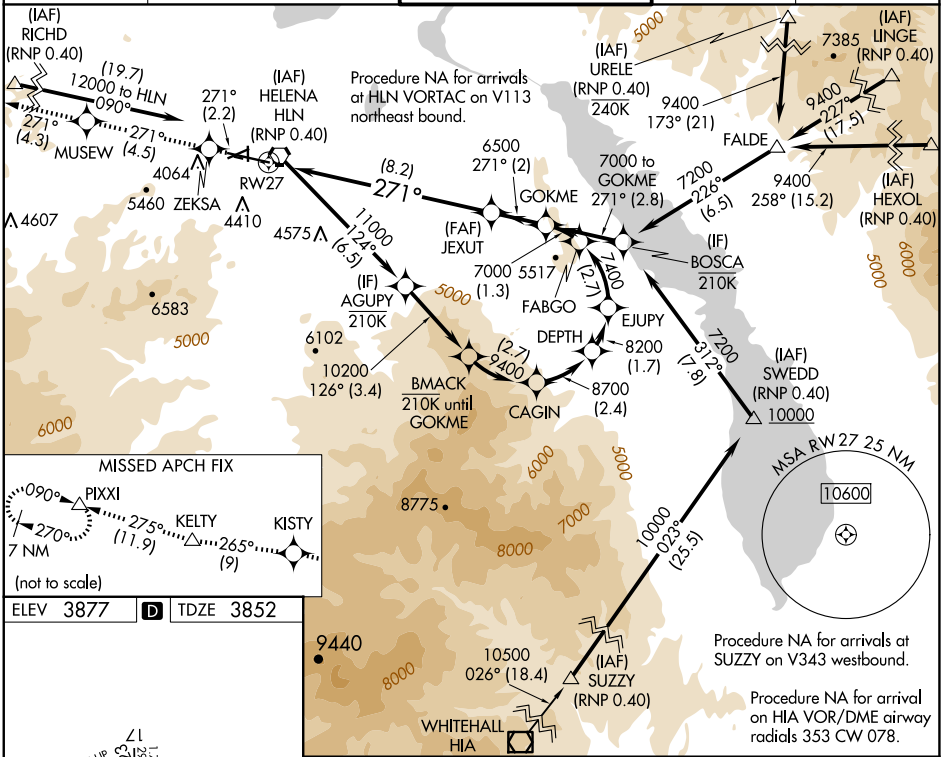
APP CRS <b>271°</b>	Rwy Idg TDZE Apt Elev	<b>9000</b> <b>3852</b> <b>3877</b>
------------------------	-----------------------------	---

# RNAV (RNP) Y RWY 27

HELENA RGNL (HLN)

RNP AR APCH - GPS.		MALSR 	MISSED APPROACH: Climb to 12000 on the RNAV missed approach route to PIXXI and hold, continue climb-in-hold to 12000. *Missed approach requires minimum climb of 260 feet per NM to 7900; if unable to meet climb gradient, see RNAV (RNP) Z RWY 27.
For uncompensated Baro-VNAV systems, procedure NA below -28°C or above 54°C. Missed approach requires RNP less than 1.0. For inop ALS, increase RNP 0.30 DA* visibility all Cats to 1 1/2 SM.			

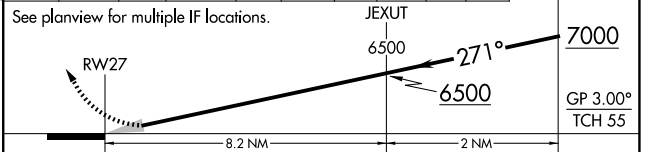
ATIS <b>120.4</b>	HELENA APP CON * <b>119.5 229.4</b>	HELENA TOWER * <b>118.3 (CTAF) 0 257.8</b>	GND CON <b>121.9</b>	UNICOM <b>122.95</b>
----------------------	--	---	-------------------------	-------------------------



ELEV 3877	<b>D</b>	TDZE 3852
-----------	----------	-----------



12000	ZEKSA	MUSEW	KISTY	KELTY	PIXXI	GOKME
tr 271°	tr 271°	tr 271°	tr 265°	tr 275°	tr 275°	



CATEGORY	A	B	C	D
RNP 0.15 DA*		4284-3/4	432 (500-3/4)	
RNP 0.30 DA*		4321-1	469 (500-1)	

REIL Rws 9, 17, and 35  
 MIRL Rws 5-23 and 17-35  
 HIRL Rwy 9-27

NW-1, 17 APR 2025 to 15 MAY 2025

NW-1, 17 APR 2025 to 15 MAY 2025