

LOC	I-HLN	APP CRS	Rwy Idg TDZE	N/A
<b>110.1</b>		<b>091°</b>	Apt Elev	<b>3877</b>

# LOC BC-C

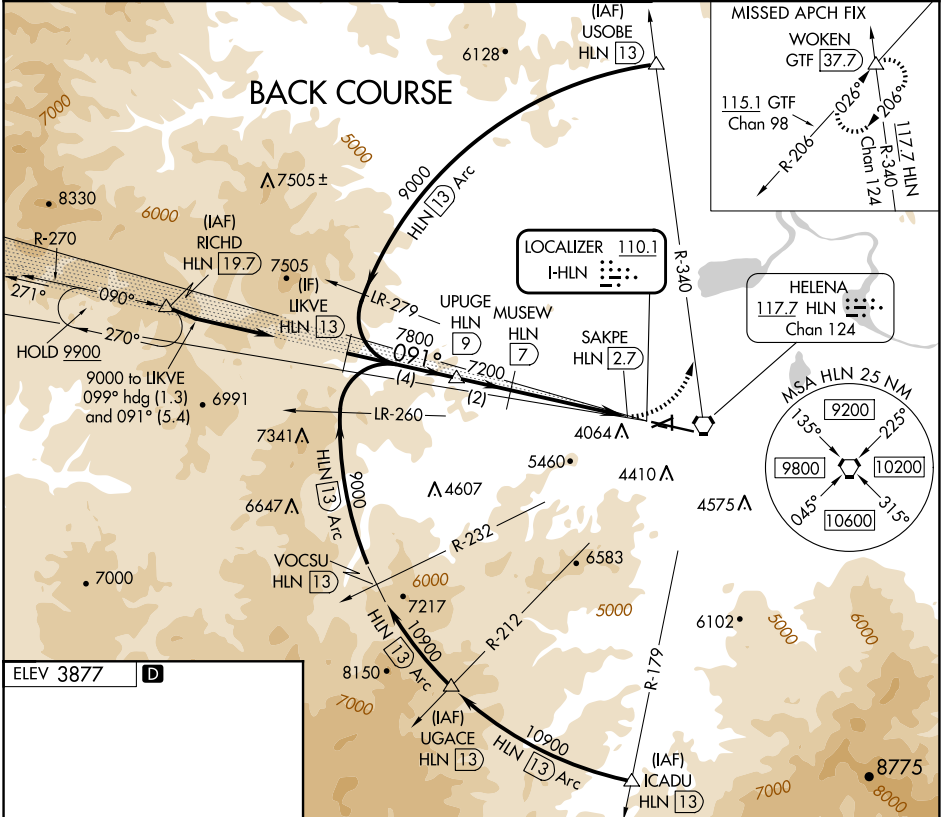
HELENA RGNL (HLN)

DME required.

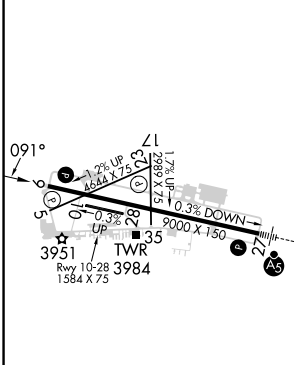
**⚠** Circling NA to Rwys 10 and 28. Circling Rwy 5, 23, 35 NA at night.  
**⚠** DME from HLN VORTAC. Simultaneous reception of I-HLN and HLN DME required. Rwy 5, 23, 35 helicopter visibility reduction below 1 SM NA.  
**❄** -17°C

MISSED APPROACH: Climbing left turn to 9400 on HLN VORTAC R-340 to WOKEN INT/GTF 37.7 DME and hold, continue climb-in-hold to 9400.

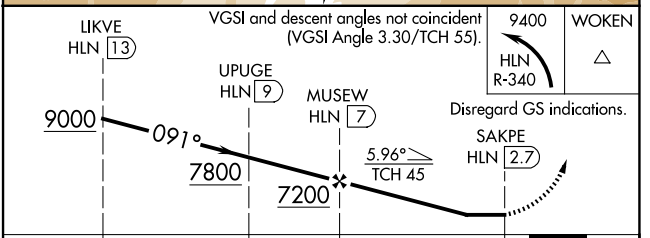
ATIS <b>120.4</b>	HELENA APP CON * <b>119.5 229.4</b>	HELENA TOWER * <b>118.3 (CTAF) 257.8</b>	GND CON <b>121.9</b>	UNICOM <b>122.95</b>
----------------------	--	---	-------------------------	-------------------------



ELEV 3877 **D**



REIL Rws 9, 17, and 35 **Ⓛ**  
 MIRL Rws 5-23 and 17-35 **Ⓛ**  
 HIRL Rwy 9-27 **Ⓛ**



CATEGORY	A	B	C	D
<b>C</b> CIRCLING	5140-1¼ 1263 (1300-1¼)	5140-1½ 1263 (1300-1½)	6000-3 2123 (2200-3)	NA

NW-1, 17 APR 2025 to 15 MAY 2025

NW-1, 17 APR 2025 to 15 MAY 2025