

VOR/DME VUH 113.0 Chan 77	APP CRS 143°	Rwy Idg TDZE Apt Elev	6000 5 6
--	------------------------	-----------------------------	-------------------------------------

VOR RWY 14

SCHOLES INTL AT GALVESTON (GLS)

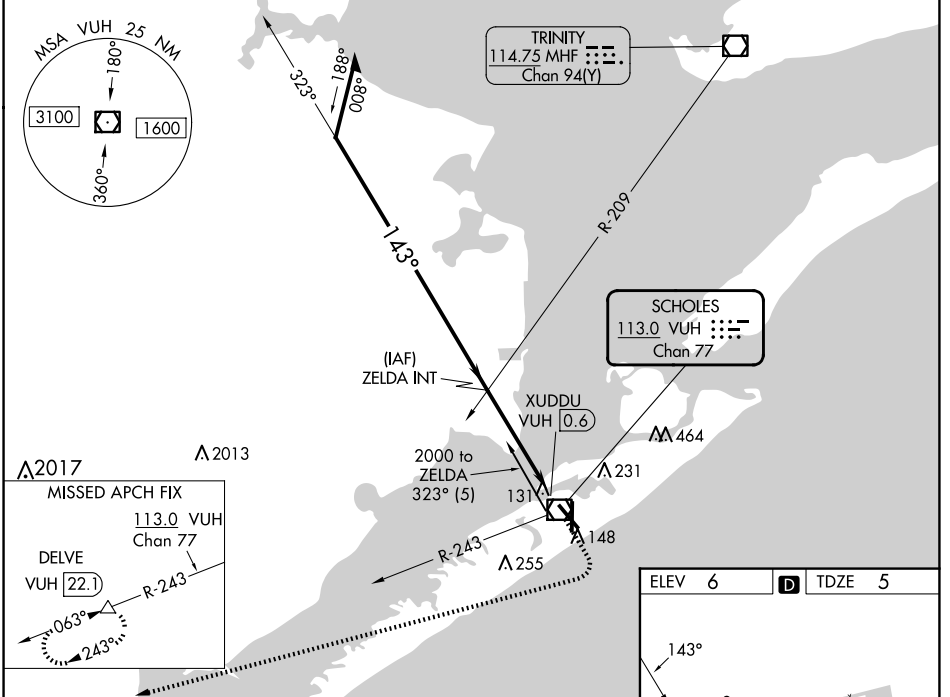
DME and RADAR required.

NA
Circling NA east of Rwy 18 and northeast of Rwy 32.

MALSR

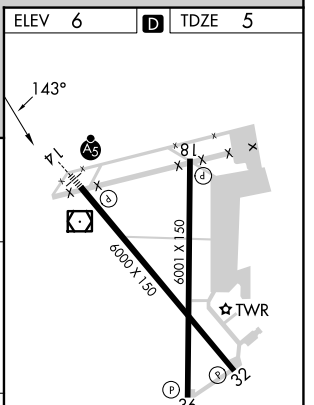
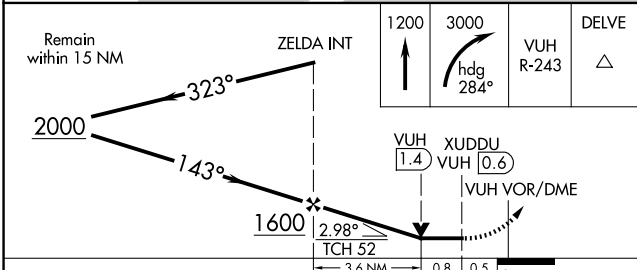
MISSED APPROACH: Climb to 1200 then climbing right turn to 3000 on heading 284° and VUH VOR/DME R-243 to DELVE/22.1 DME and hold.

ASOS 123.95	HOUSTON APP CON 134.45 284.0	GALVESTON TOWER * 120.575 (CTAF) 0	GND CON 118.625	CLNC DEL 135.35 (When twr closed)	UNICOM 123.05
-----------------------	--	---	---------------------------	--	-------------------------



SC-5, 17 APR 2025 to 15 MAY 2025

SC-5, 17 APR 2025 to 15 MAY 2025



CATEGORY	A	B	C	D	E
S-14	460- $\frac{1}{2}$	455 (500- $\frac{1}{2}$)	460- $\frac{7}{8}$	455 (500- $\frac{7}{8}$)	
CIRCLING	500-1 494 (500-1)	520-1 514 (600-1)	620- $1\frac{3}{4}$ 614 (700- $1\frac{3}{4}$)	620-2 614 (700-2)	620- $2\frac{1}{4}$ 614 (700- $2\frac{1}{4}$)

REIL Rwys 18, 32, and 36
MIRL Rwy 18-36
HIRL Rwy 14-32