

| | | | |
|--|------------------------|-----------------------------|-------------------------------------|
| WAAS CH 48831 W36A | APP CRS 359° | Rwy Idg TDZE Apt Elev | 6001 5 6 |
|--|------------------------|-----------------------------|-------------------------------------|

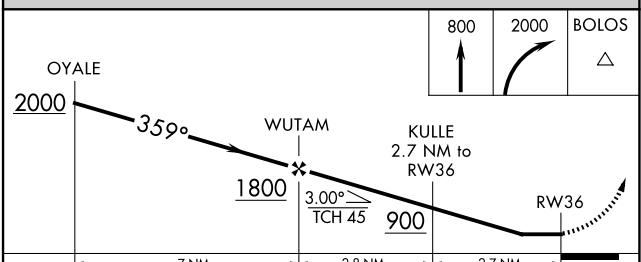
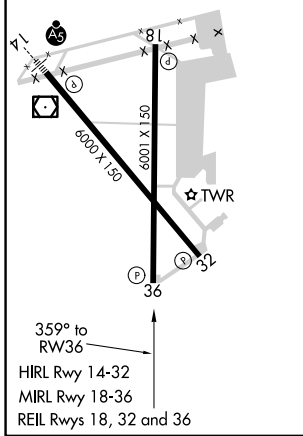
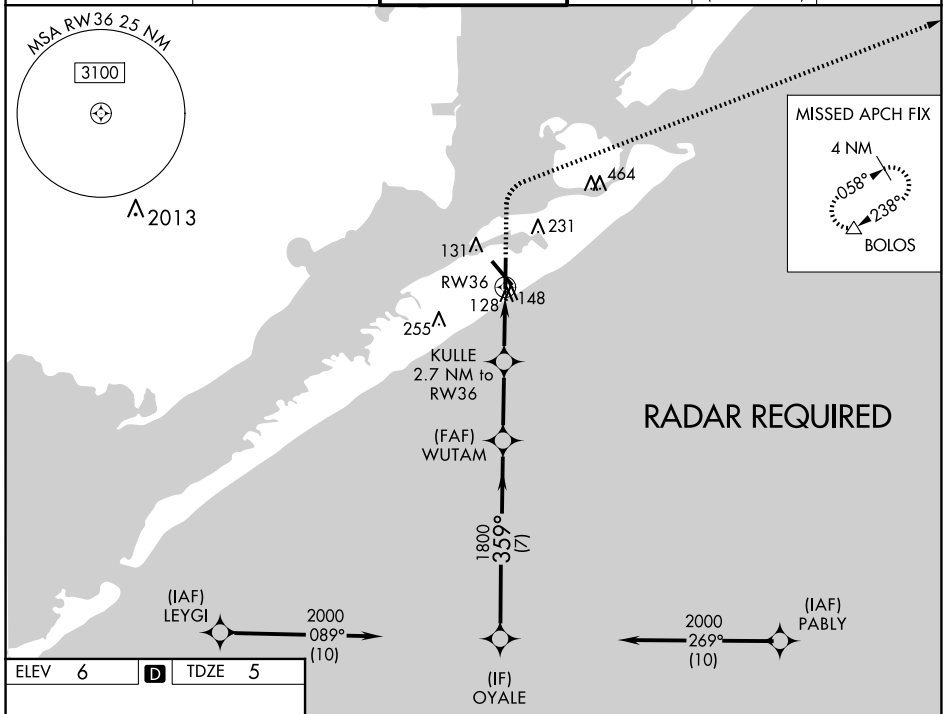
RNAV (GPS) RWY 36

SCHOLES INTL AT GALVESTON (GLS)

⚠ When VGSI inop, Straight-in/Circling Rwy 36 procedure NA at night. Circling NA east of Rwy 18 and northeast of Rwy 32. DME/DME RNP-0.3 NA. Helicopter visibility reduction below 1 SM NA. When local altimeter setting not received, use William P Hobby altimeter setting; increase all MDA 80 feet. Increase LP Cat C/D/E visibility 1/8 SM, LNAV Cat C/D/E visibility 1/8 SM and Circling Cat C/D/E visibility 1/4 SM.

MISSED APPROACH:
Climb to 800 then climbing right turn to 2000 direct BOLOS and hold.

| | | | | | |
|-----------------------|--|--|---------------------------|--|-------------------------|
| ASOS 123.95 | HOUSTON APP CON 134.45 284.0 | GALVESTON TOWER * 120.575 (CTAF) 0 | GND CON 118.625 | CLNC DEL 135.35 (When twr closed) | UNICOM 123.05 |
|-----------------------|--|--|---------------------------|--|-------------------------|



| CATEGORY | | A | B | C | D | E |
|----------|-----|-------------|-------------|--------------|--------------|--------------|
| LP | MDA | 440-1 | 435 (500-1) | 440-1¼ | 435 (500-1¼) | |
| LNAV | MDA | 460-1 | 455 (500-1) | 460-1⅜ | 455 (500-1⅜) | |
| CIRCLING | | 500-1 | 520-1 | 620-1¾ | 620-2 | 620-2¼ |
| | | 494 (500-1) | 514 (600-1) | 614 (700-1¾) | 614 (700-2) | 614 (700-2¼) |

SC-5, 17 APR 2025 to 15 MAY 2025

SC-5, 17 APR 2025 to 15 MAY 2025