

WAAS CH 40101 W32A	APP CRS 318°	Rwy Idg TDZE Apt Elev	6000 5 6
--	------------------------	-----------------------------	-------------------------------------

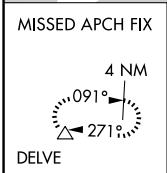
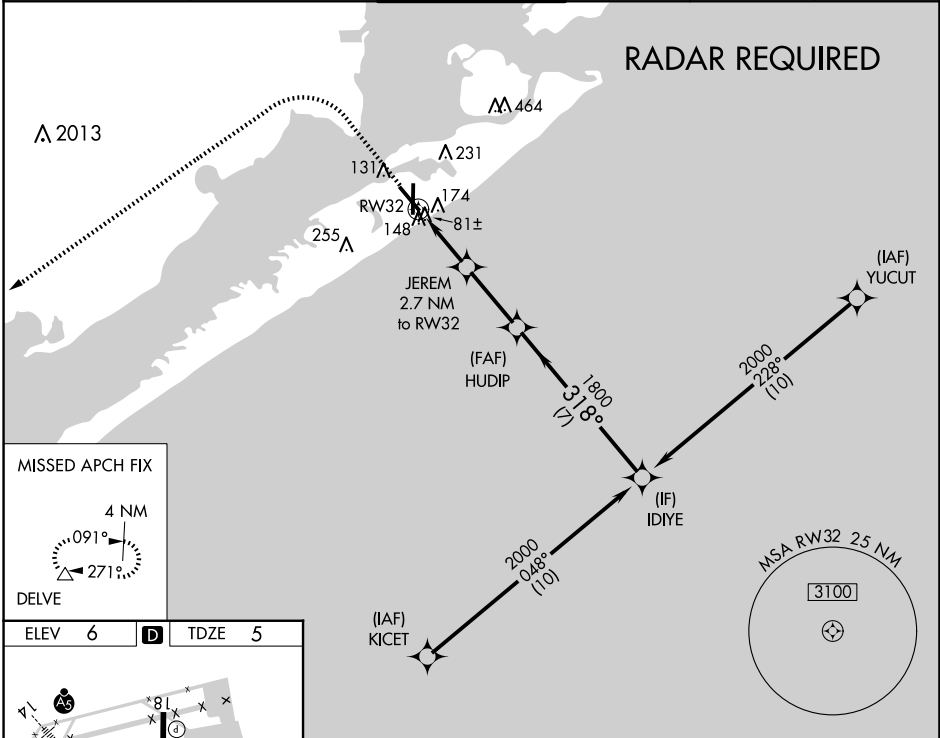
RNAV (GPS) RWY 32

SCHOLES INTL AT GALVESTON (GLS)

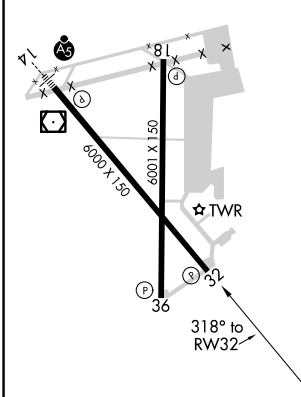
⚠ Circling NA east of Rwy 18 and northeast of Rwy 32. DME/DME RNP-0.3 NA. Helicopter visibility reduction below 3/4 SM NA. VDP NA with William P Hobby altimeter setting. When local altimeter setting not received, use William P Hobby altimeter setting; increase all MDA 80 feet. Increase LP Cat C/D/E visibility 1/8 SM, increase LNAV Cat C/D/E visibility 1/8 SM and increase Circling Cat C/D/E visibility 1/4 SM.

MISSED APPROACH:
Climb to 800 then climbing left turn to 3000 direct DELVE and hold.

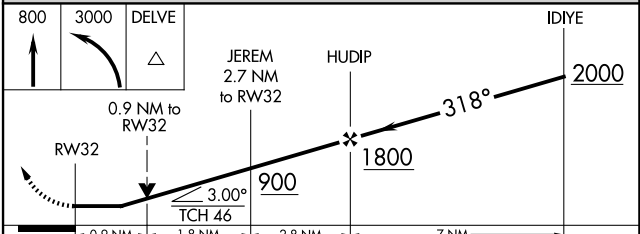
ASOS 123.95	HOUSTON APP CON 134.45 284.0	GALVESTON TOWER * 120.575 (CTAF) 0	GND CON 118.625	CLNC DEL 135.35 (When twr closed)	UNICOM 123.05
-----------------------	--	---	---------------------------	--	-------------------------



ELEV 6	D	TDZE 5
--------	----------	--------



REIL Rwy 18, 32 and 36
MIRL Rwy 18-36
HIRL Rwy 14-32



800	3000	DELVE	IDIYE
↑	↶	△	
RW32		JEREM 2.7 NM to RW32	HUDIP
0.9 NM to RW32		3.00°	2000
TCH 46		1800	
-0.9 NM		1.8 NM	2.8 NM
CATEGORY		A	B
LP MDA		340-1	335 (400-1)
LNAV MDA		440-1 435 (500-1)	440-1 1/4 435 (500-1 1/4)
CIRCLING		500-1 494 (500-1)	520-1 514 (600-1)
		620-1 3/4 614 (700-1 3/4)	620-2 614 (700-2)
			620-2 1/4 614 (700-2 1/4)

SC-5, 17 APR 2025 to 15 MAY 2025

SC-5, 17 APR 2025 to 15 MAY 2025