

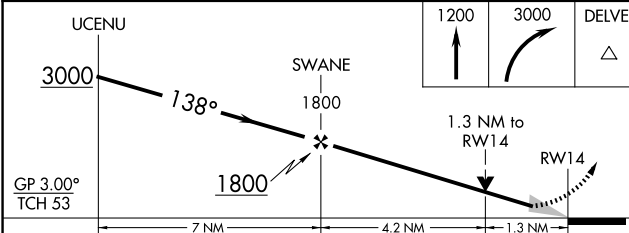
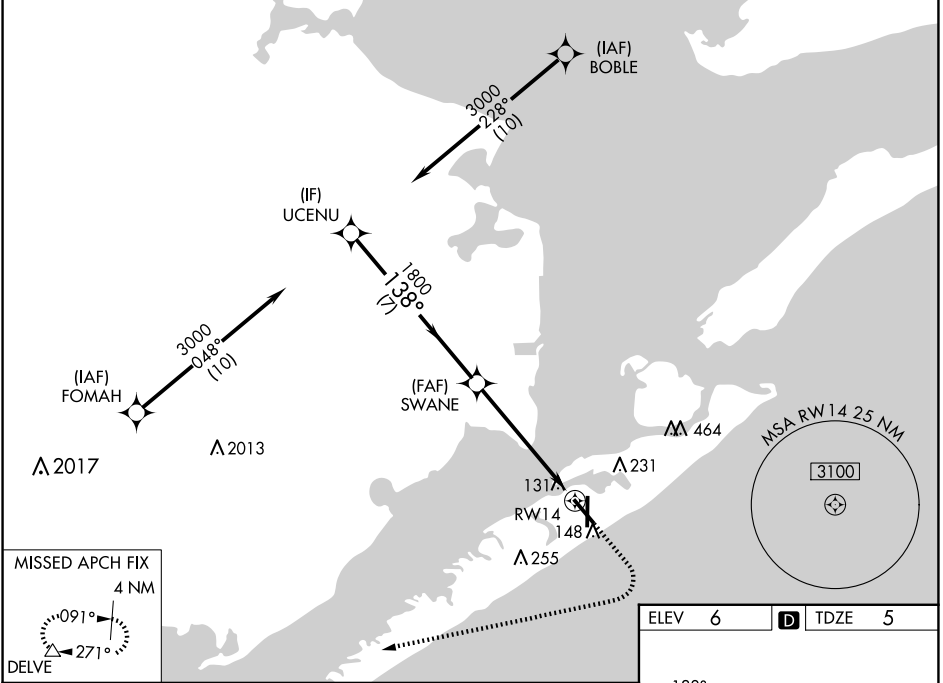
WAAS CH <b>65606</b> <b>W14A</b>	APP CRS <b>138°</b>	Rwy Idg TDZE Apt Elev	<b>6000</b> <b>5</b> <b>6</b>
--	------------------------	-----------------------------	-------------------------------------

# RNAV (GPS) RWY 14

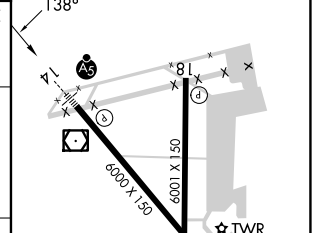
SCHOLES INTL AT GALVESTON (GLS)

RNP APCH - GPS.		MALSR	MISSED APPROACH: Climb to 1200 then climbing right turn to 3000 direct DELVE and hold.		
<p>⚠ Circling NA east of Rwy 18 and northeast of Rwy 32. For uncompensated Baro-VNAV systems, LNAV/VNAV NA below 0°C or above 54°C.</p>					

ASOS <b>123.95</b>	HOUSTON APP CON <b>134.45 284.0</b>	GALVESTON TOWER ★ <b>120.575 (CTAF)</b>	GND CON <b>118.625</b>	CLNC DEL <b>135.35</b> (When twr closed)	UNICOM <b>123.05</b>
-----------------------	--	--	---------------------------	--	-------------------------



ELEV 6	TDZE 5
--------	--------



CATEGORY	A	B	C	D
LPV DA		205-½	200 (200-½)	
LNAV/VNAV DA		342-½	337 (400-½)	
LNAV MDA	460-½	455 (500-½)	460-¾	455 (500-¾)
CIRCLING	500-1 494 (500-1)	520-1 514 (600-1)	620-1¾ 614 (700-1¾)	620-2 614 (700-2)

REIL Rwy 18, 32, and 36  
MIRL Rwy 18-36  
HIRL Rwy 14-32

SC-5, 17 APR 2025 to 15 MAY 2025

SC-5, 17 APR 2025 to 15 MAY 2025