

LEONA FOUR DEPARTURE

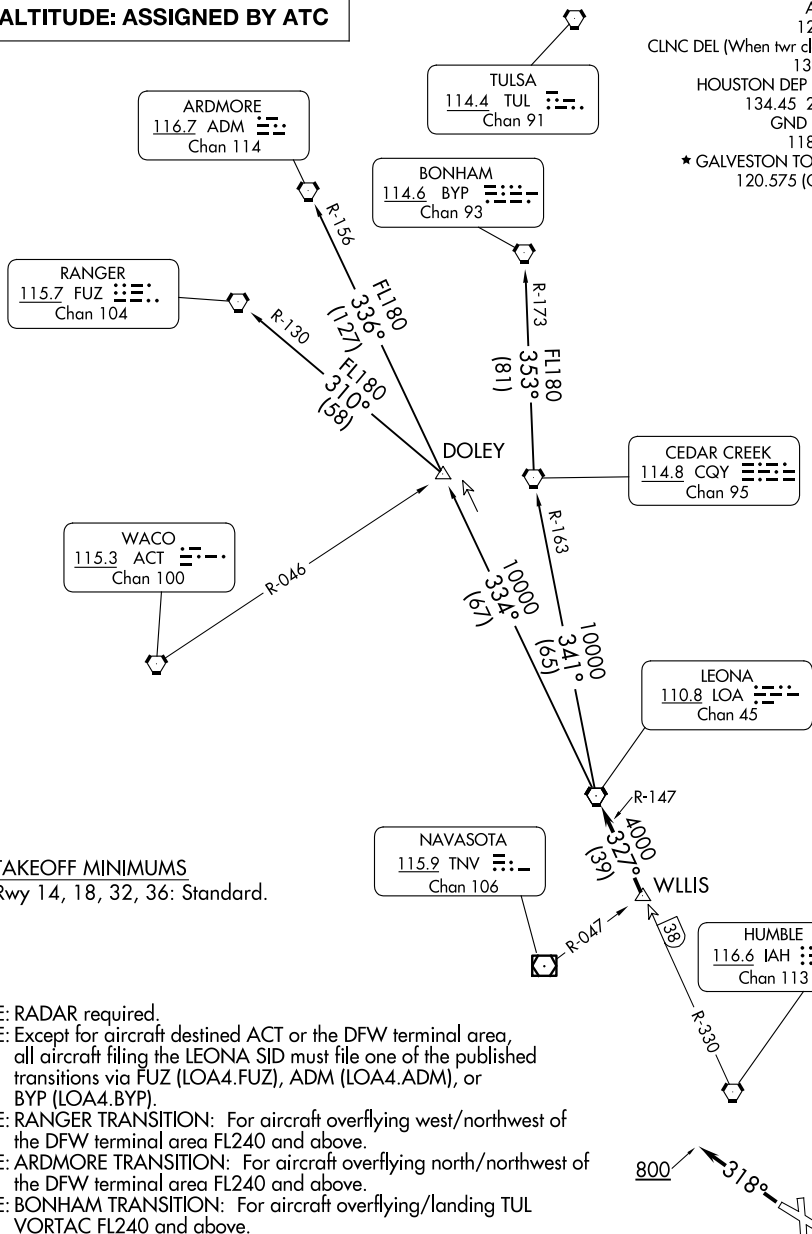
AL-164 (FAA)

SCHOLES INTL AT GALVESTON (GLS)

GALVESTON, TEXAS

TOP ALTITUDE: ASSIGNED BY ATC

ASOS
123.95
CLNC DEL (When twr closed)
135.35
HOUSTON DEP CON
134.45 284.0
GND CON
118.625
★ GALVESTON TOWER
120.575 (CTAF)



TAKEOFF MINIMUMS
Rwy 14, 18, 32, 36: Standard.

- NOTE: RADAR required.
- NOTE: Except for aircraft destined ACT or the DFW terminal area, all aircraft filing the LEONA SID must file one of the published transitions via FUZ (LOA4.FUZ), ADM (LOA4.ADM), or BYP (LOA4.BYP).
- NOTE: RANGER TRANSITION: For aircraft overflying west/northwest of the DFW terminal area FL240 and above.
- NOTE: ARDMORE TRANSITION: For aircraft overflying north/northwest of the DFW terminal area FL240 and above.
- NOTE: BONHAM TRANSITION: For aircraft overflying/landing TUL VORTAC FL240 and above.

NOTE: Chart not to scale.

(CONTINUED ON FOLLOWING PAGE)

LEONA FOUR DEPARTURE

(LOA4.LOA) 07OCT21

GALVESTON, TEXAS

SCHOLES INTL AT GALVESTON (GLS)

SC-5, 17 APR 2025 to 15 MAY 2025

SC-5, 17 APR 2025 to 15 MAY 2025