

SC-5, 17 APR 2025 to 15 MAY 2025

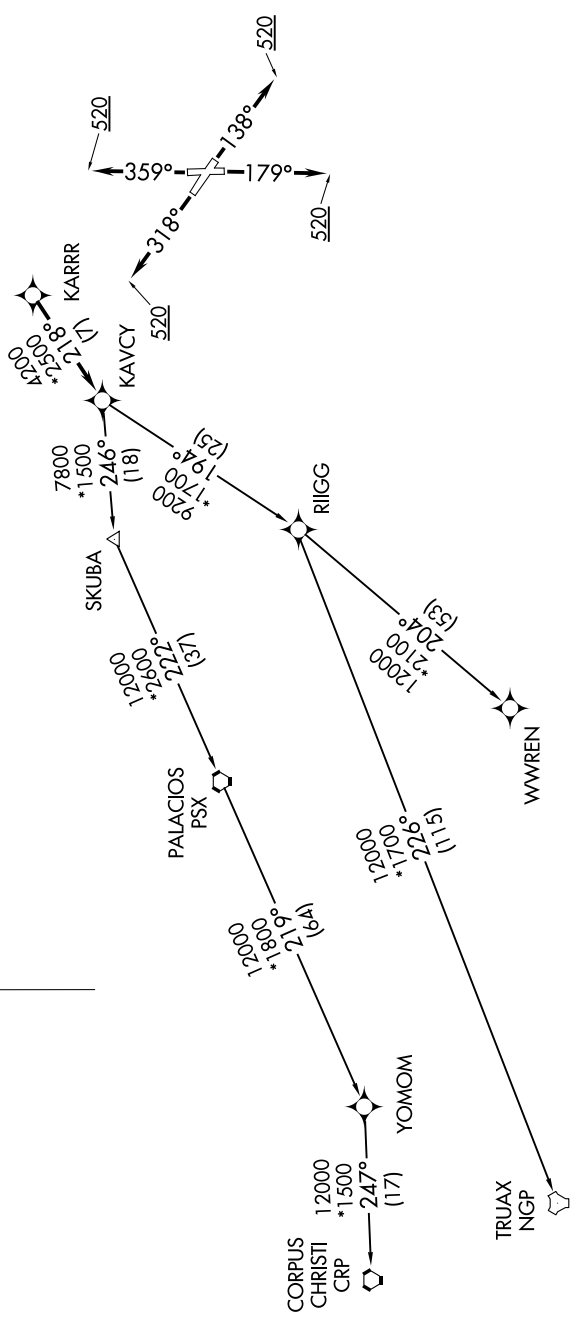
RNAV-1 DME/DME/IRU or GPS.
RADAR required.

ASOS 123.95
CLNC DEL (When twr closed) 135.35
GND CON 118.625
GALVESTON TOWER * 120.575 (CTAF)
HOUSTON DEP CON 134.45 284.0

TAKEOFF MINIMUMS
Rwys 14, 18, 32, 36: Standard with minimum climb of 500' per NM to 520.



TOP ALTITUDE:
ASSIGNED BY ATC



(NARRATIVE ON FOLLOWING PAGE)

NOTE: Chart not to scale.

SC-5, 17 APR 2025 to 15 MAY 2025