

APP CRS	Rwy Idg	<b>6002</b>
<b>082°</b>	TDZE	<b>137</b>
	Apt Elev	<b>146</b>

# RNAV (GPS) Y RWY 8

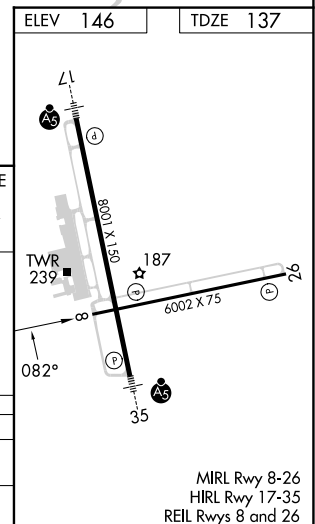
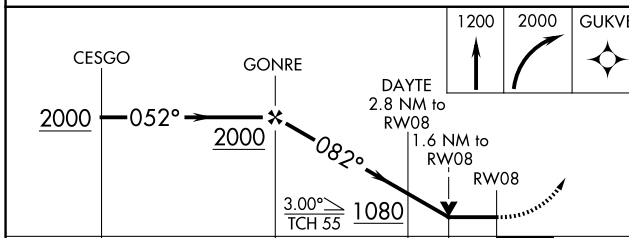
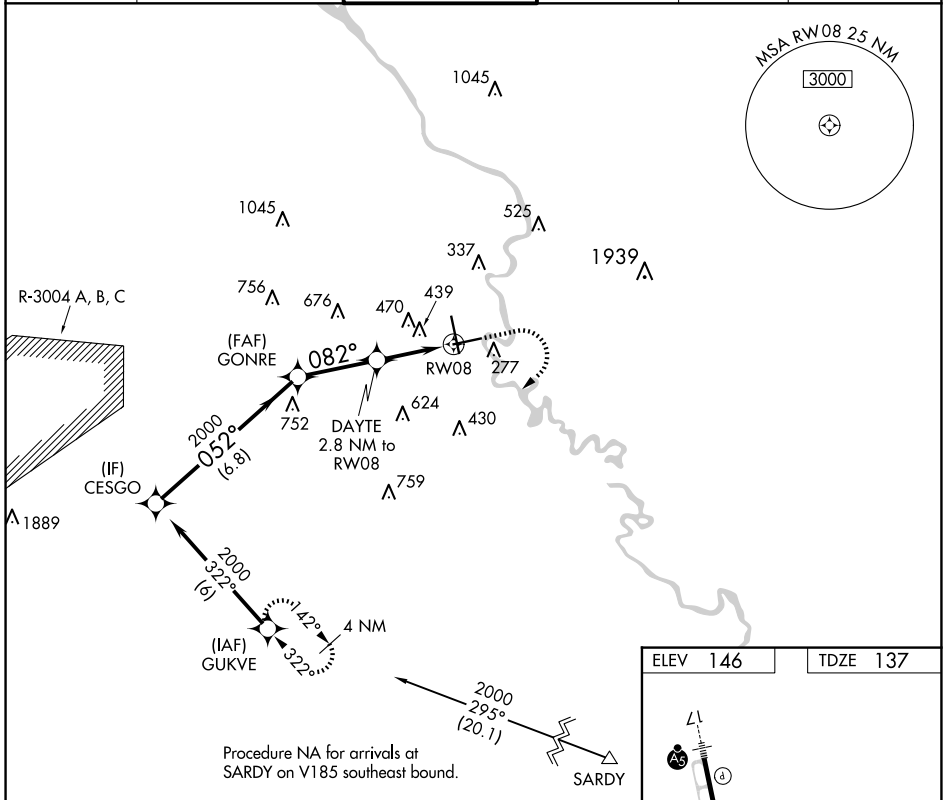
AUGUSTA RGNL AT BUSH FLD (AGS)

RNP APCH - GPS.

▼ Rwy 8 helicopter visibility reduction below  $\frac{3}{4}$  SM NA. VDP NA with Daniel Fld altimeter setting. When local altimeter setting not received, use Daniel Fld altimeter setting and increase all MDAs 60 feet; increase LNAV Cats C and D visibility  $\frac{1}{8}$  SM and Circling Cats C and D visibility  $\frac{1}{4}$  SM.

MISSED APPROACH: Climb to 1200 then climbing right turn to 2000 direct GUKVE and hold.

ATIS	AUGUSTA APP CON *	AUGUSTA TOWER *	GND CON	CLNC DEL	UNICOM
<b>132.75</b>	<b>126.8 270.3</b>	<b>118.7 (CTAF) 0 239.3</b>	<b>121.9 348.6</b>	<b>118.65</b>	<b>122.95</b>



CATEGORY	A	B	C	D
LNAV MDA	700-1	563 (600-1)	700- $\frac{1}{8}$	563 (600- $\frac{1}{8}$ )
CIRCLING	780-1	634 (700-1)	780- $\frac{1}{4}$ 634 (700- $\frac{1}{4}$ )	940- $\frac{1}{2}$ 794 (800- $\frac{1}{2}$ )

SE-4, 17 APR 2025 to 15 MAY 2025

SE-4, 17 APR 2025 to 15 MAY 2025