

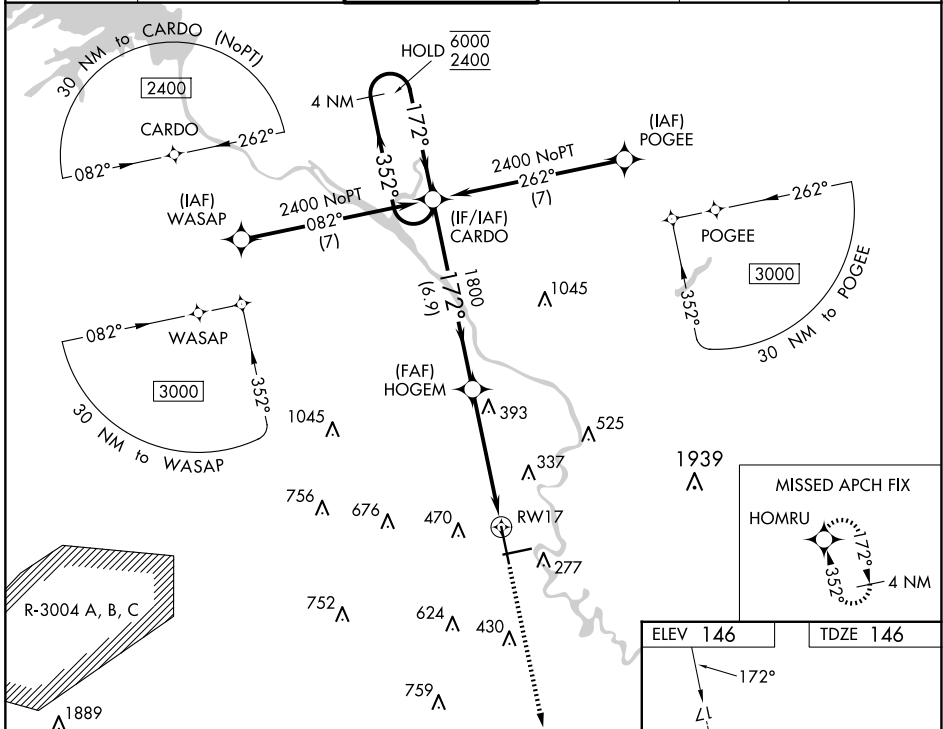
WAAS CH 77504 W17A	APP CRS 172°	Rwy Idg TDZE 146 Apt Elev 146	8001
--	------------------------	---	-------------

RNAV (GPS) RWY 17

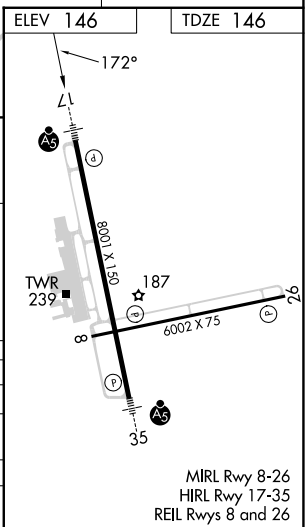
AUGUSTA RGNL AT BUSH FLD (AGS)

RNP APCH - GPS.		MALS R	MISSED APPROACH: Climb to 2100 direct HOMRU and hold.
<p>▼ For uncompensated Baro-VNAV systems, LNAV/VNAV NA below -6°C or above 54°C. ▲ For inop ALS, increase LNAV/VNAV all Cats visibility to RVR 4500.</p>			

ATIS 132.75	AUGUSTA APP CON ★ 126.8 270.3	AUGUSTA TOWER ★ 118.7 (CTAF) 0 239.3	GND CON 121.9 348.6	CLNC DEL 118.65	UNICOM 122.95
-----------------------	---	--	-------------------------------	---------------------------	-------------------------



4 NM Holding Pattern		VGSI and RNAV glidepath not coincident (VGSI Angle 3.00/TCH 71).		2100	HOMRU
<p>6000 ← 352°</p> <p>2400 → 172°</p> <p>GP 3.00°</p> <p>TCH 57</p>		<p>HOGEM 1800</p> <p>1.5 NM to RW17</p>			
<p>6.9 NM</p> <p>3.5 NM</p> <p>1.5 NM</p>					
CATEGORY	A	B	C	D	
LPV DA		351/24	205 (300-½)		
LNAV/VNAV DA		460/24	314 (400-½)		
LNAV MDA	700/24	554 (600-½)	700/60	554 (600-1¼)	
CIRCLING	780-1	634 (700-1)	780-1¾	940-2½	634 (700-1¾)
			794 (800-2½)		



SE-4, 17 APR 2025 to 15 MAY 2025

SE-4, 17 APR 2025 to 15 MAY 2025