

VOR/DME AST 114.0 Chan 87	APP CRS 070°	Rwy Idg TDZE Apt Elev	4894 14 14
---	------------------------	-----------------------------	---------------------------------------

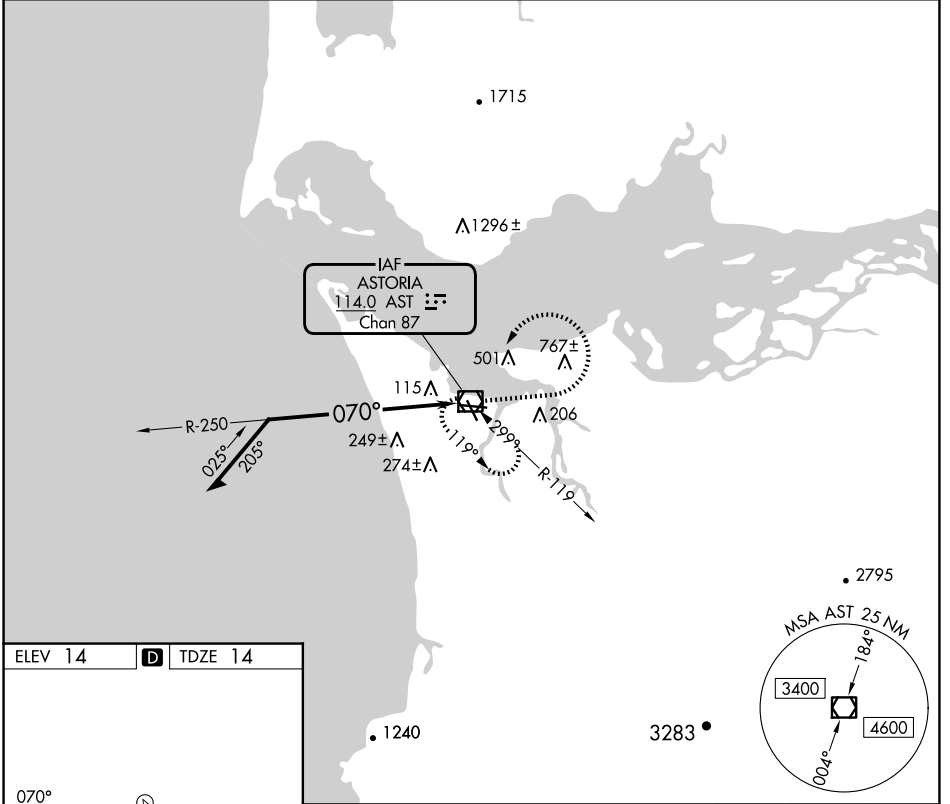
VOR RWY 8

ASTORIA RGNL (AST)

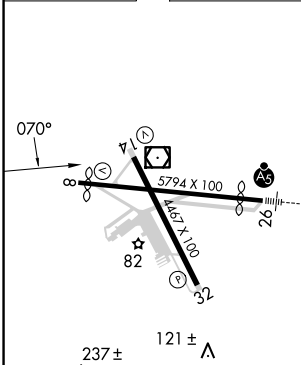
⚠ Rwy 8 helicopter visibility reduction below $\frac{3}{4}$ SM NA.

MISSED APPROACH: Climb to 1300 then climbing left turn to 4800 in AST VOR/DME holding pattern, continue climb-in-hold to 4800.

ASOS 135.375	SEATTLE CENTER 124.2 317.6	UNICOM 122.8 (CTAF) 0
------------------------	--------------------------------------	---------------------------------



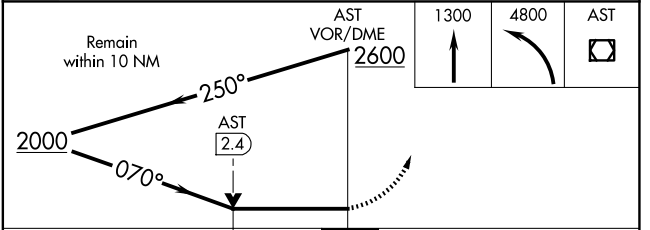
ELEV 14	D	TDZE 14
---------	----------	---------



REIL Rwy 8 **0**

REIL Rwy 14

MIRL Rwy 8-26 and 14-32 **0**



CATEGORY	A	B	C	D
S-8	720-1	706 (800-1)	720-2	706 (800-2)
C CIRCLING	720-1 706 (800-1)	800-1 786 (800-1)	1080-3 1066 (1100-3)	1160-3 1146 (1200-3)

NW-1, 17 APR 2025 to 15 MAY 2025

NW-1, 17 APR 2025 to 15 MAY 2025