

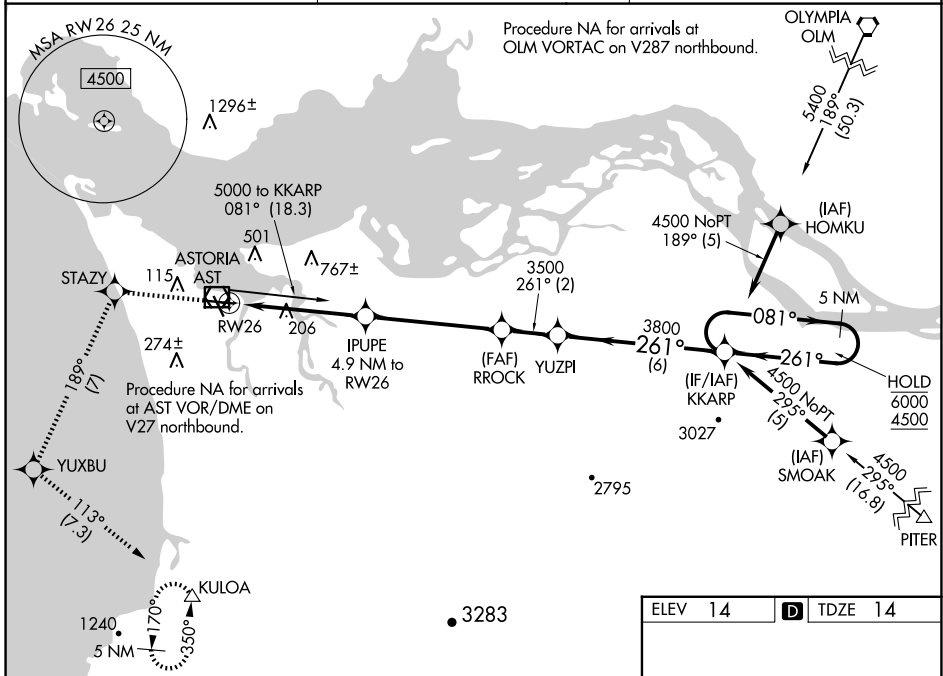
WAAS CH <b>97711</b> <b>W26A</b>	APP CRS <b>261°</b>	Rwy Idg TDZE <b>14</b> Apt Elev <b>14</b>	<b>4780</b>
--	------------------------	---	-------------

# RNAV (GPS) RWY 26

ASTORIA RGNL (AST)

RNP APCH.	MALSR 	MISSED APPROACH: (Do not exceed 210K until STAZY) Climb to 5000 direct STAZY and left turn on track 189° to YUXBU and left turn on track 113° to KULOA and hold, continue climb-in-hold to 5000.
<p><b>⚠</b> Inop table does not apply to LPV all Cats. Rwy 26 helicopter visibility reduction below 3/4 SM NA. For inop ALS, increase LNAV Cat A/B visibility to 1 SM and Cat C/D to 2 1/2 SM.</p>		

ASOS <b>135.375</b>	SEATTLE CENTER <b>124.2 317.6</b>	UNICOM <b>122.8 (CTAF) 0</b>
------------------------	--------------------------------------	---------------------------------



NW-1, 17 APR 2025 to 15 MAY 2025

NW-1, 17 APR 2025 to 15 MAY 2025

5000	STAZY	YUXBU	KULOA	KKARP	5 NM Holding Pattern
*LNAV only	IPUPE 4.9 NM to RW26	RROCK	YUZPI		
	*2.3 NM to RW26	3500	3800	261°	6000 4500
	2.3 NM	2.6 NM	4.9 NM	2 NM	6 NM
CATEGORY	A	B	C	D	
LPV DA	264-3/4		250 (300-3/4)		
LNAV MDA	860-3/4	846 (900-3/4)	860-1 7/8	846 (900-1 7/8)	
<b>C</b> CIRCLING	860-1 1/4	846 (900-1 1/4)	1080-3 1066 (1100-3)	1160-3 1146 (1200-3)	

ELEV 14	<b>D</b> TDZE 14
---------	------------------

237±  
121±  
REIL Rwy 8  
REIL Rwy 14  
MIRL Rwy 8-26 and 14-32