

VOR/DME AST <b>114.0</b> Chan <b>87</b>	APP CRS <b>070°</b>	Rwy Idg <b>4894</b> TDZE <b>14</b> Apt Elev <b>14</b>
---	------------------------	---

# COPTER VOR RWY 8

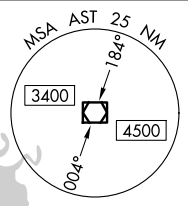
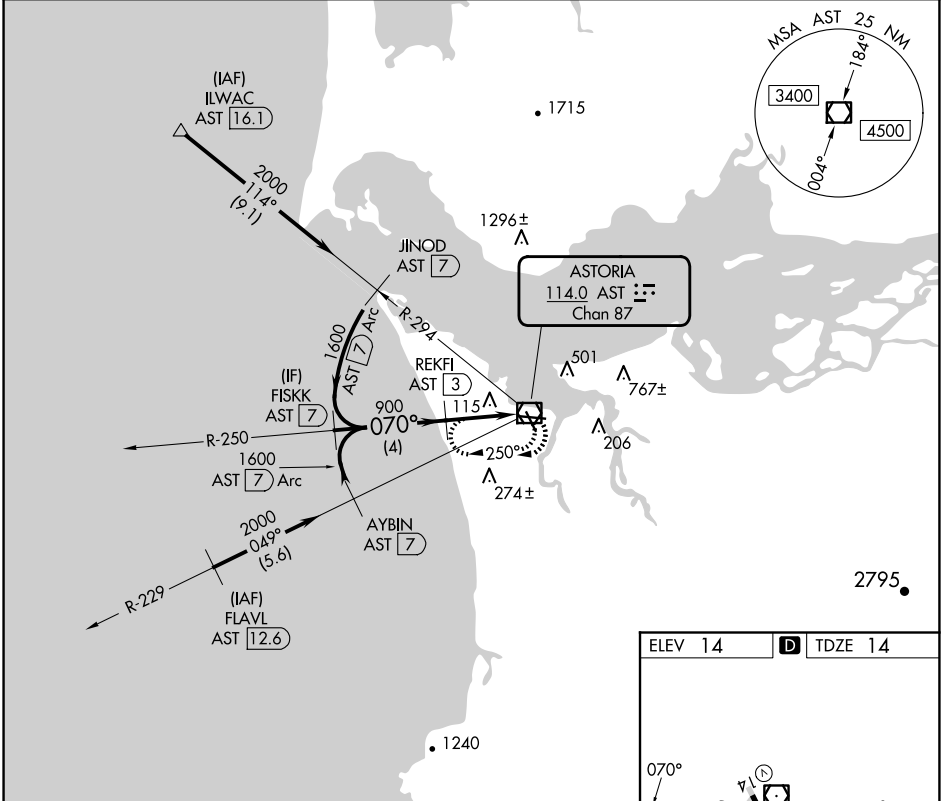
ASTORIA RGNL (AST)

DME required.

▲ NA

MISSED APPROACH: Climbing right turn to 2000 in AST VOR/DME holding pattern.

ASOS <b>135.375</b>	SEATTLE CENTER <b>124.2 317.6</b>	UNICOM <b>122.8 (CTAF) 0</b>
------------------------	--------------------------------------	---------------------------------



NW-1, 17 APR 2025 to 15 MAY 2025

NW-1, 17 APR 2025 to 15 MAY 2025

