

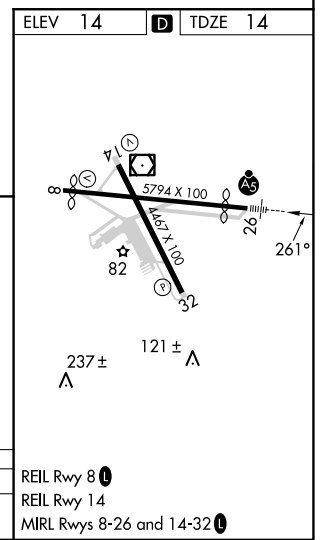
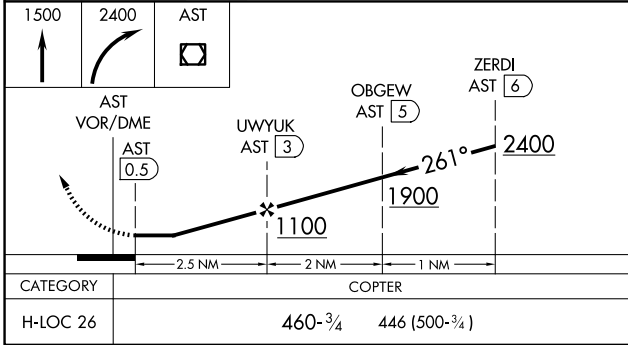
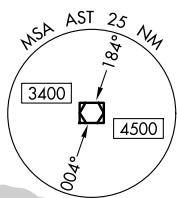
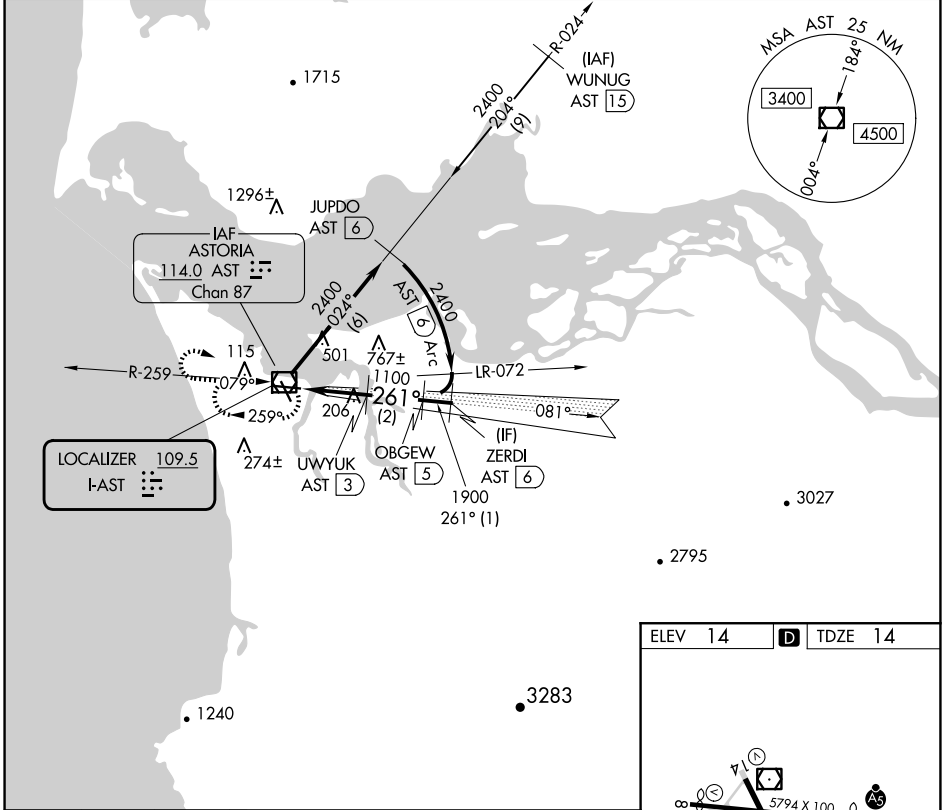
LOC I-AST 109.5	APP CRS 261°	Rwy ldg TDZE Elev 4780 14 14
---------------------------	------------------------	--

COPTER LOC RWY 26

ASTORIA RGNL (AST)

DME required.		MALSR	MISSED APPROACH: Climb to 1500 then climbing right turn to 2400 direct AST VOR/DME and hold.
<p>▼ DME from AST VOR/DME. Simultaneous reception of I-AST and AST DME required. For inop ALS increase visibility to 1 SM.</p> <p>▲ NA</p>			

ASOS 135.375	SEATTLE CENTER 124.2 317.6	UNICOM 122.8 (CTAF) 0
------------------------	--------------------------------------	---------------------------------



NW-1, 17 APR 2025 to 15 MAY 2025

NW-1, 17 APR 2025 to 15 MAY 2025