

NDB OP 339	APP CRS 302°	Rwy Idg 4962
		TDZE 796
		Apt Elev 798

NDB RWY 30

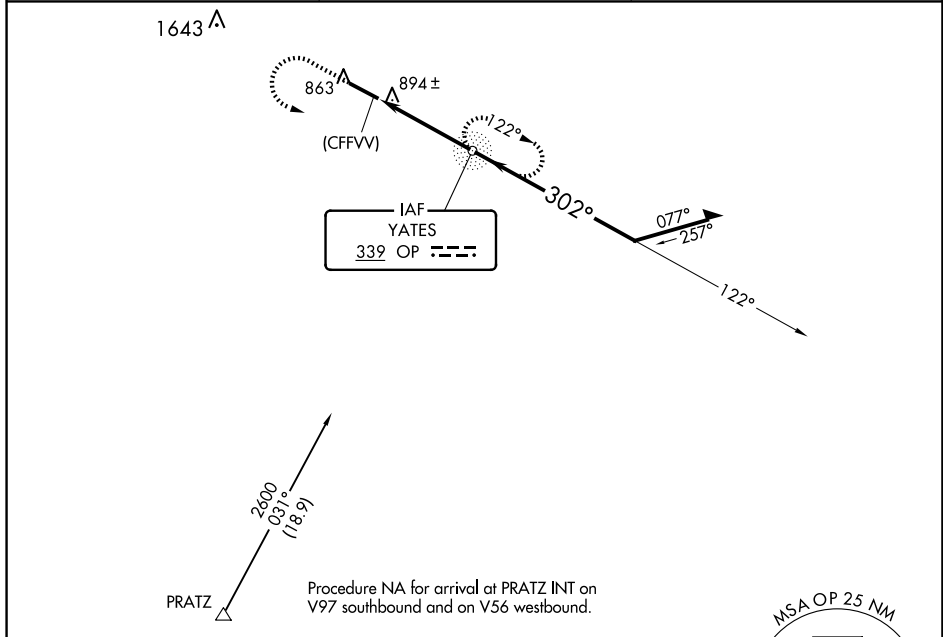
THOMASTON-UPSON COUNTY (OPN)

▼ For inop ALS, increase S-30 Cats A, B visibility to 1 SM and Cats C, D to 1½ SM.

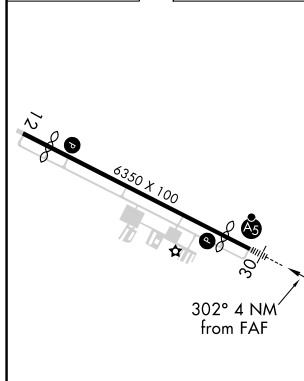
MALS R

MISSED APPROACH: Climb to 1500 then climbing left turn to 2600 direct YATES NDB and hold, continue climb-in-hold to 2600.

AWOS-3 133.975	ATLANTA APP CON ★ 124.2 279.6	UNICOM 122.8 (CTAF)
--------------------------	---	-------------------------------



ELEV 798	D	TDZE 796
----------	----------	----------



VGSI and descent angles not coincident (VGSI Angle 3.00/TCH 27).

1500	2600	OP		
CATEGORY				
A	B	C	D	
S-30	1200-¾ 404 (500-¾)			
CIRCLING	1220-1 422 (500-1)	1260-1 462 (500-1)	1260-1½ 462 (500-1½)	1680-3 882 (900-3)

FAF to MAP 4 NM					
Knots	60	90	120	150	180
Min:Sec	4:00	2:40	2:00	1:36	1:20