

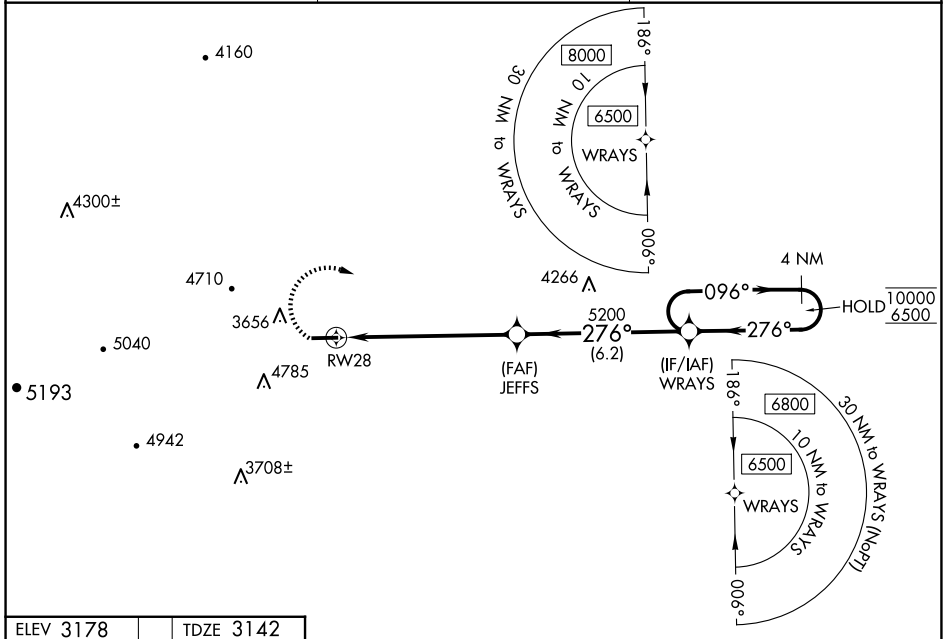
WAAS CH 70437 W28A	APP CRS 276°	Rwy Idg TDZE Apt Elev	5002 3142 3178
--	------------------------	-----------------------------	---

RNAV (GPS) RWY 28

ASHE COUNTY (GEV)

RNP APCH - GPS.	MISSED APPROACH: Climbing right turn to 6500 direct WRAYS and hold, continue climb-in-hold to 6500. *Missed approach requires minimum climb of 350 feet per NM to 5700.
Circling to Rwy 10 NA at night. For uncompensated Baro-VNAV systems, LNAV/VNAV NA below 14°C or above 54°C.	
-16°C	

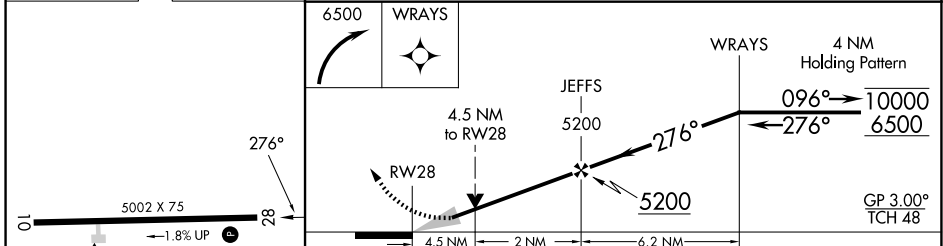
AWOS-3 120.675	ATLANTA CENTER 125.15 263.0	UNICOM 122.8 (CTAF)
--------------------------	---------------------------------------	-------------------------------



SE-2, 20 MAR 2025 to 17 APR 2025

SE-2, 20 MAR 2025 to 17 APR 2025

ELEV 3178	TDZE 3142
-----------	-----------



REIL Rwy 28	MIRL Rwy 10-28				
<table border="1"> <tr> <td>6500</td> <td>WRAYS</td> </tr> <tr> <td></td> <td></td> </tr> </table>		6500	WRAYS		
6500	WRAYS				
GP 3.00°	TCH 48				
CATEGORY	A	B	C	D	
LPV DA*	3799-1 $\frac{1}{4}$		657 (700-1 $\frac{1}{2}$)		
LPV DA	4052-4		910 (900-4)		
LNAV/VNAV DA	4024-4		882 (900-4)		
LNAV MDA	4560-1 $\frac{1}{4}$ 1418 (1400-1 $\frac{1}{4}$)	4560-1 $\frac{1}{2}$ 1418 (1400-1 $\frac{1}{2}$)	4560-3	1418 (1400-3)	
CIRCLING	4560-1 $\frac{1}{4}$ 1382 (1400-1 $\frac{1}{4}$)	4560-1 $\frac{1}{2}$ 1382 (1400-1 $\frac{1}{2}$)	5140-3 1962 (2000-3)	5180-3 2002 (2100-3)	