

WAAS CH 62834 W09A	APP CRS 092°	Rwy Idg TDZE Apt Elev	5000 856 861
--	------------------------	-----------------------------	---

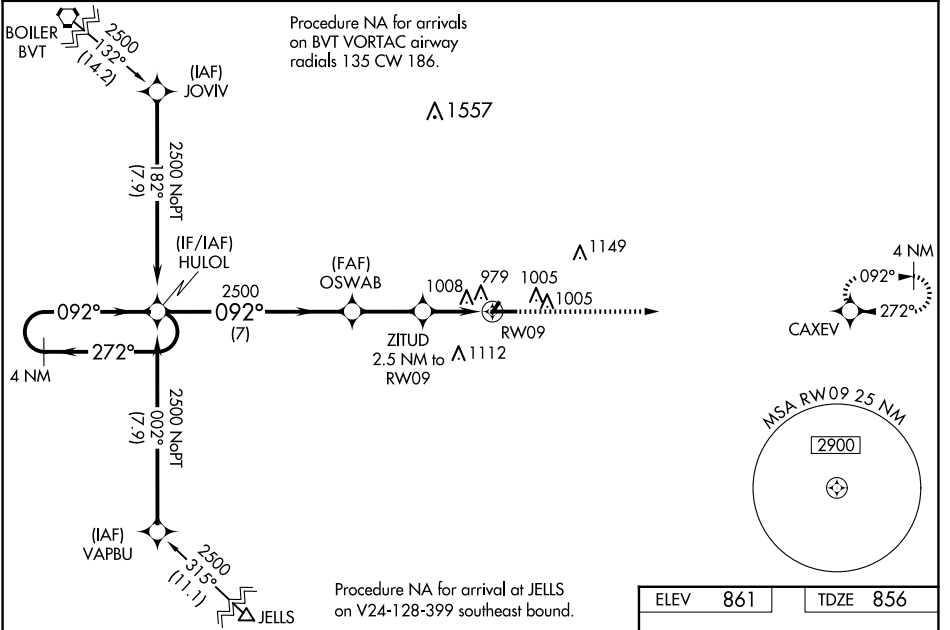
RNAV (GPS) RWY 9

FRANKFORT CLINTON COUNTY RGNL (F'K'R)

Baro-VNAV NA when using Indianapolis Exec altimeter setting. For uncompensated Baro-VNAV systems, LNAV/VNAV NA below -16°C (4°F) or above 54°C (130°F). DME/DME RNP-0.3 NA. VDP NA with Indianapolis Exec altimeter setting. When local altimeter setting not received, use Indianapolis Exec altimeter setting; increase LPV DA to 1162 feet and visibility 1/8 SM all Cats; increase LNAV/VNAV DA to 1245 feet and visibility 1/8 SM all Cats; increase all MDAs 60 feet and LNAV and Circling Cats C/D visibilities 1/4 SM.

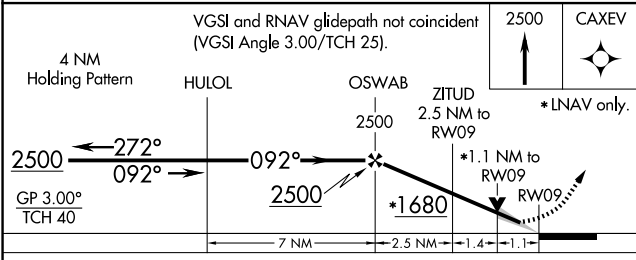
MISSED APPROACH:
Climb to 2500 direct CAXEV and hold.

AWOS-3 124.325	GRISSOM APP CON * 123.85 291.675	UNICOM 123.0 (CTAF) 0
--------------------------	--	---------------------------------



EC-2, 20 MAR 2025 to 17 APR 2025

EC-2, 20 MAR 2025 to 17 APR 2025



ELEV 861	TDZE 856
----------	----------

MIRL Rwy 4-22 and 9-27 0
REIL Rwy 9 and 27 0