

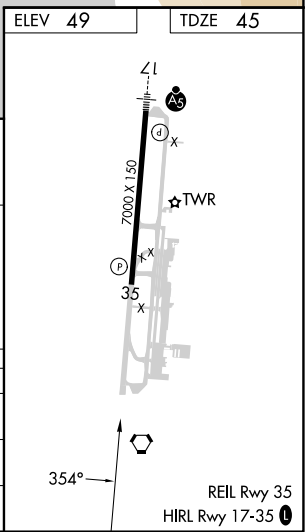
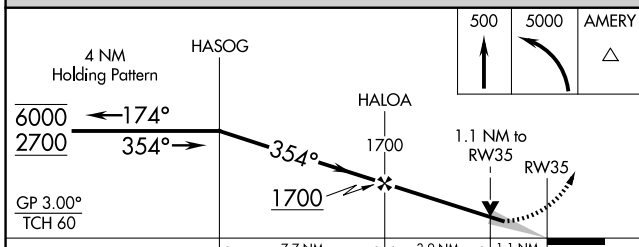
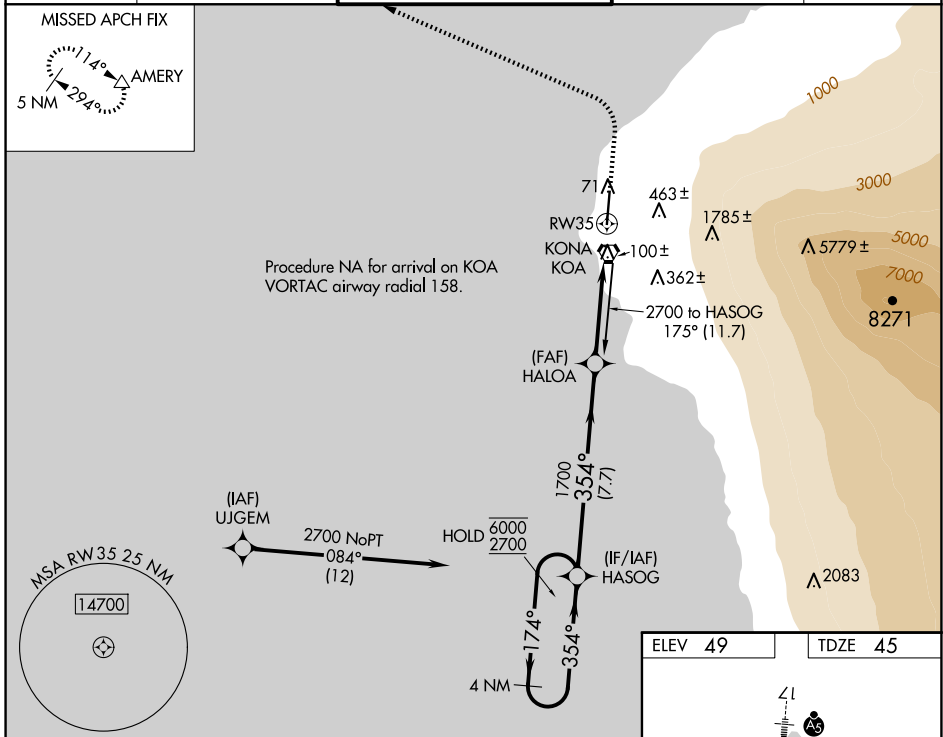
APP CRS	Rwy Idg	7000
354°	TDZE	45
	Apt Elev	49

RNAV (GPS) RWY 35

ELLISON ONIZUKA KONA INTL AT KEAHOLE (KOA) (PHKO)

RNP APCH - GPS.		MISSED APPROACH: Climb to 500 then climbing left turn to 5000 direct AMERY and hold.	
<p>⚠ Circling NA east of Rwy 17-35. WAAS VNAV NA. For uncompensated Baro-VNAV systems, LNAV/VNAV NA below 18°C or above 54°C.</p>			

ATIS 127.4	HCF CENTER 118.45 278.3	KONA TOWER* 120.3(CTAF) 254.3	GND CON 121.9	CLNC DEL 118.6
----------------------	-----------------------------------	---	-------------------------	--------------------------



CATEGORY	A	B	C	D	E
LNAV/VNAV DA	373-1 328 (400-1)				
LNAV MDA	460-1	415 (500-1)	460-1½	415 (500-1½)	
C CIRCLING	520-1	471 (500-1)	520-1½ 471 (500-1½)	600-2	551 (600-2)

PAC, 20 FEB 2025 to 17 APR 2025

PAC, 20 FEB 2025 to 17 APR 2025