

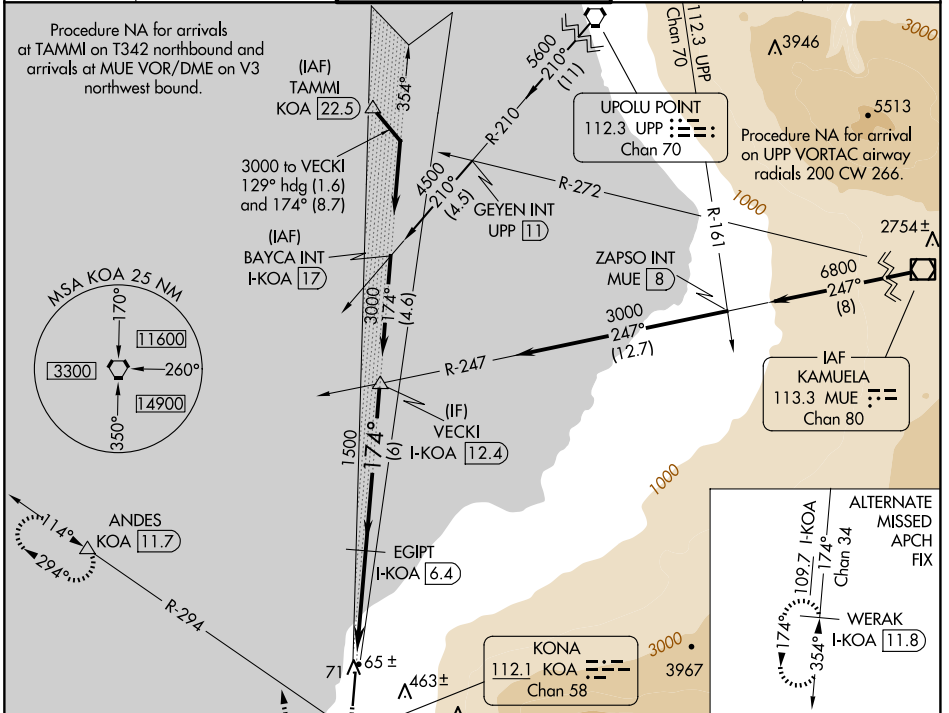
LOC/DME I-KOA	APP CRS	Rwy Idg	<b>7000</b>
<b>109.7</b>	<b>174°</b>	TDZE	<b>49</b>
Chan 34		Apt Elev	<b>49</b>

# ILS or LOC RWY 17

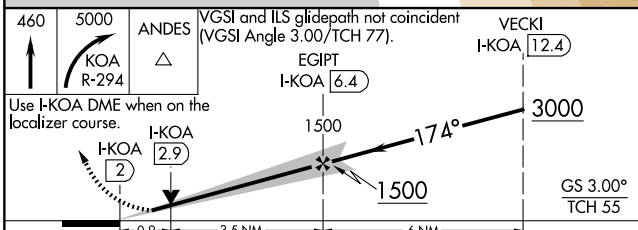
## ELLISON ONIZUKA KONA INTL AT KEAHOLE (KOA)(PHKO)

DME required.	MALSR	MISSED APPROACH: Climb to 460 then climbing right turn to 5000 on KOA VORTAC R-294 to ANDES/KOA VORTAC 11.7 DME and hold, continue climb-in-hold to 5000.
Autopilot coupled approach NA below 500. Circling NA east of Rwy 17-35. For inop ALS, increase S-ILS 17 Cat E visibility to ¾ SM and S-LOC 17 Cats C, D, E visibility to 1 SM.		

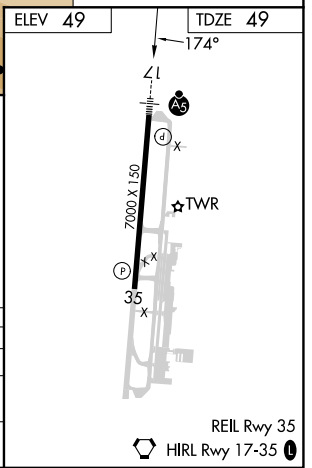
ATIS	HCF CENTER	KONA TOWER*	GND CON	CLNC DEL
<b>127.4</b>	<b>118.45 278.3</b>	<b>120.3(CTAF) 254.3</b>	<b>121.9</b>	<b>118.6</b>



ELEV 49	TDZE 49
	174°



CATEGORY	A	B	C	D	E
S-ILS 17			249-½	200 (200-½)	
S-LOC 17	400-½	351 (400-½)		400-⅝	351 (400-⅝)
<b>C</b> CIRCLING	520-1	471 (500-1)	520-1½	471 (500-1½)	600-2 551 (600-2)



PAC, 20 FEB 2025 to 17 APR 2025

PAC, 20 FEB 2025 to 17 APR 2025

REIL Rwy 35

HIRL Rwy 17-35