

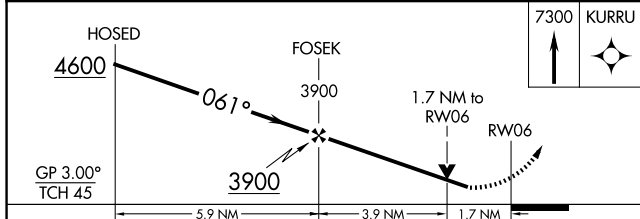
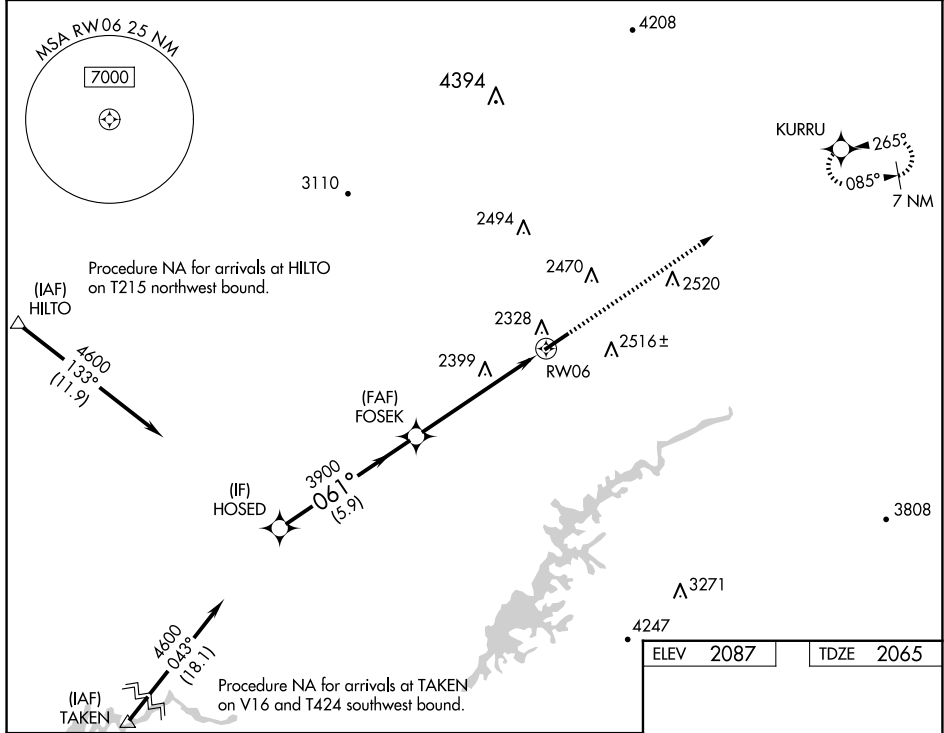
WAAS CH 82411 W06A	APP CRS 061°	Rwy Idg TDZE Apt Elev	5500 2065 2087
--	------------------------	-----------------------------	---

RNAV (GPS) RWY 6

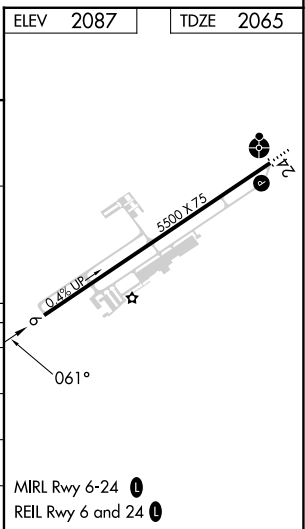
VIRGINIA HIGHLANDS (VJI)

RNP APCH - GPS.	MISSED APPROACH: Climb to 7300 direct KURRU and hold, continue climb-in-hold to 7300.
<p>⚠ Rwy 6 helicopter visibility reduction below 3/4 SM NA. For uncompensated Baro-VNAV systems, LNAV/VNAV NA below -19°C or above 54°C.</p>	

AWOS-3 128.125	TRI CITY APP CON * 125.25 349.0	UNICOM 122.8 (CTAF) 0
--------------------------	---	---------------------------------



CATEGORY	A	B	C	D
LPV DA	2456-1 1/8 391 (400-1 1/8)			
LNAV/VNAV DA	2528-1 3/8 463 (500-1 3/8)			
LNAV MDA	2660-1	595 (600-1)	2660-1 3/4	595 (600-1 3/4)
CIRCLING	2860-1	773 (800-1)	2860-2 1/4 773 (800-2 1/4)	3080-3 993 (1000-3)



NE-3, 20 MAR 2025 to 17 APR 2025

NE-3, 20 MAR 2025 to 17 APR 2025