

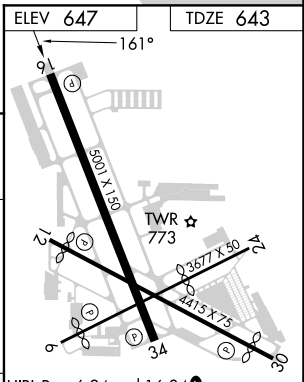
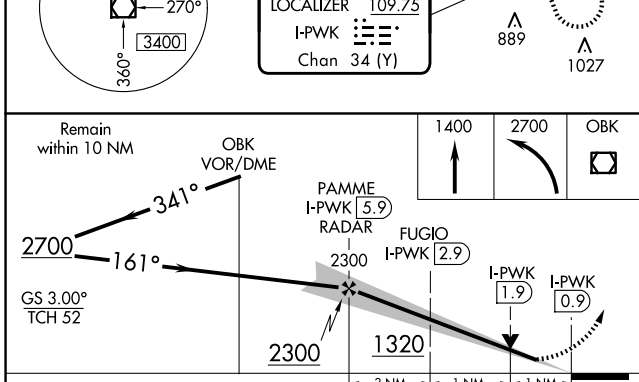
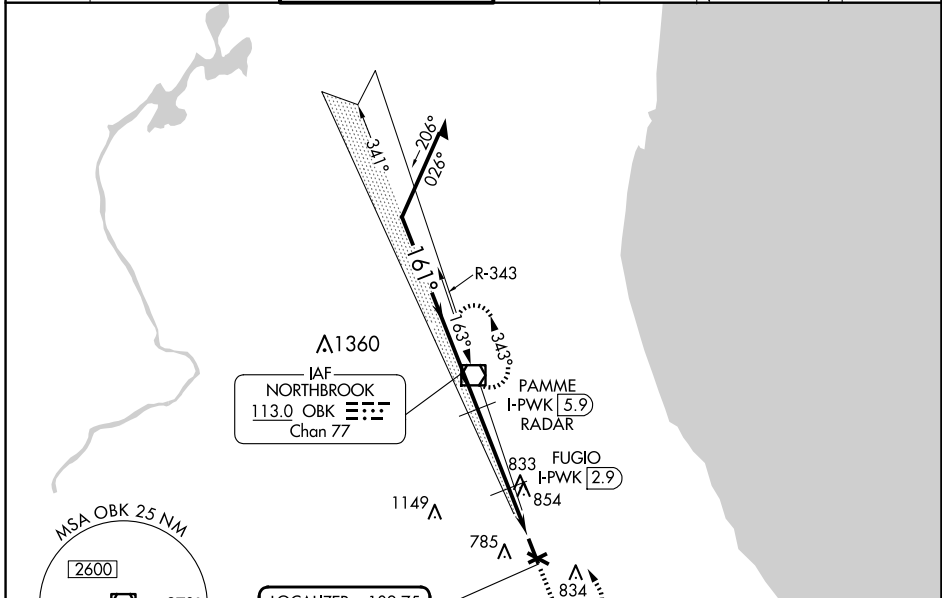
LOC/DME I-PWK <b>109.75</b> Chan <b>34</b> (Y)	APP CRS <b>161°</b>	Rwy Idg TDZE Apt Elev	<b>5001</b> <b>643</b> <b>647</b>
--	------------------------	-----------------------------	---

# ILS or LOC RWY 16

CHICAGO EXEC (PWK)

DME required.		MISSED APPROACH: Climb to 1400 then climbing left turn to 2700 direct OBK VOR/DME and hold, continue climb-in-hold to 2700.			
<p>⚠ Circling Rwy 6, 12, 24, 30 NA at night. Rwy 16 helicopter visibility reduction below 3/4 SM NA.</p>					

ATIS <b>124.2</b>	CHICAGO APP CON <b>120.55 306.925</b>	EXECUTIVE TOWER ★ <b>119.9</b> (CTAF) <b>0</b>	GND CON <b>121.7</b>	CLNC DEL <b>124.7</b>	CLNC DEL <b>124.7</b> (When twr closed)	UNICOM <b>122.95</b>
----------------------	--	---	-------------------------	--------------------------	---	-------------------------



CATEGORY	A	B	C	D	HIRL Rwy 6-24 and 16-34 <b>0</b> MIRL Rwy 12-30 <b>0</b> REIL Rwy 12 and 30 REIL Rwy 16 and 34 <b>0</b> RLLS Rwy 16 <b>0</b> FAF to MAP 5 NM	
S-ILS 16		927-7/8	284 (300-7/8)			
S-LOC 16		1020-1	377 (400-1)			
<b>C</b> CIRCLING	1140-1 493 (500-1)	1160-1 513 (600-1)	1200-1½ 553 (600-2)	1460-2¾ 813 (900-2¾)		
	Knots	60	90	120	150	180
	Min:Sec	5:00	3:20	2:30	2:00	1:40

EC-3, 20 MAR 2025 to 17 APR 2025

EC-3, 20 MAR 2025 to 17 APR 2025