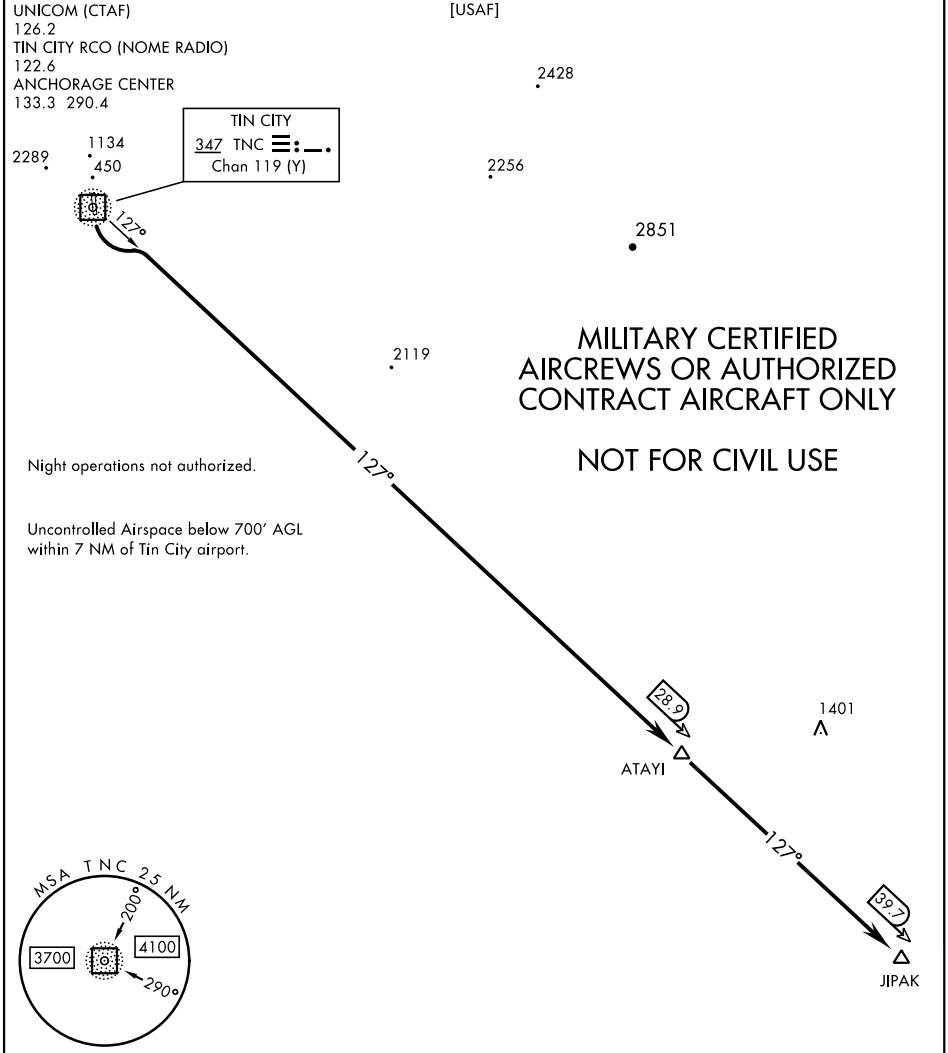


# TIN CITY FIVE RWY 17 DEPARTURE (TNC5.JIPAK)

TIN CITY LRRS (PATC)  
TIN CITY, ALASKA



AK, 20 FEB 2025 to 17 APR 2025

AK, 20 FEB 2025 to 17 APR 2025



## DEPARTURE ROUTE DESCRIPTION

TAKEOFF RWY 17: Climbing left turn to 7000, intercept TNC 127° bearing to ATAYI, then direct JIPAK.

TAKEOFF RWY 35: Not Authorized