

RNAV (GPS) RWY 35

| | | |
|----------|-----------|------|
| APCH CRS | Rwy ldg | 4702 |
| 349° | TDZE | 273 |
| | Arpt Elev | 273 |

[USAF]

TIN CITY LRSS (PATC)

RNP APCH-GPS

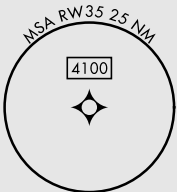
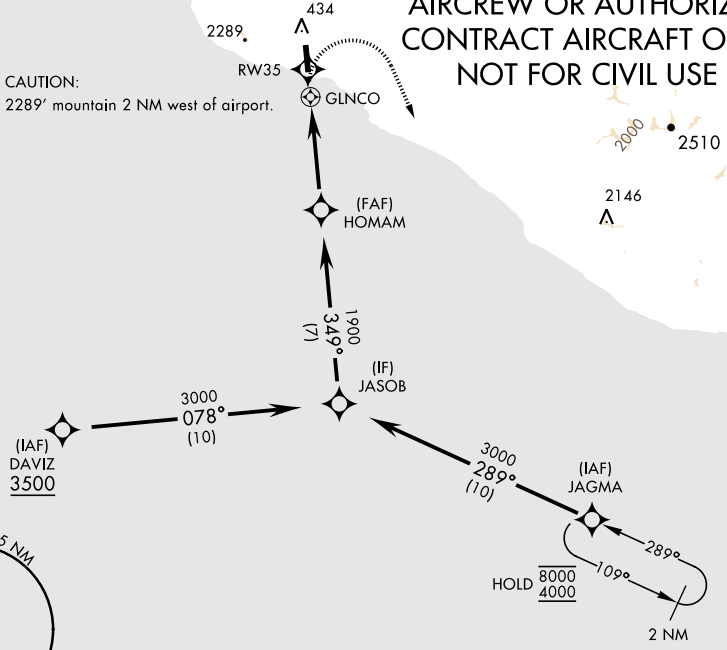
▼ Night operations not authorized.
* Circling not authorized W of Rwy 17-35.

MISSED APPROACH: Climb to 1500 then climbing right turn to 4000 direct JAGMA and hold.

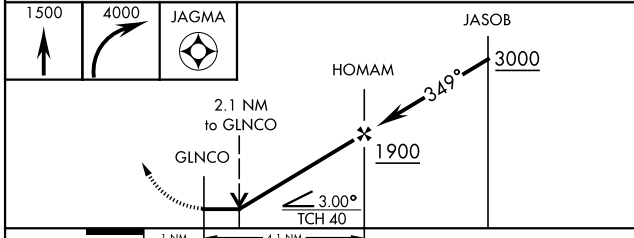
| | | |
|----------------------------------------|-------------------------------------------|-------------------------------|
| ANCHORAGE CENTER 133.3 290.4 | TIN CITY RCO (NOME RADIO) 122.6 | UNICOM 126.2 (CTAF) |
|----------------------------------------|-------------------------------------------|-------------------------------|

Uncontrolled airspace below 700' AGL within 7 NM of Tin City airport.

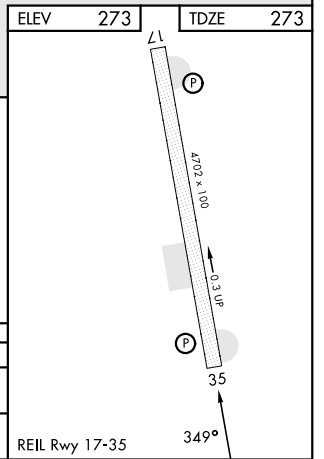
**MILITARY CERTIFIED
AIRCREW OR AUTHORIZED
CONTRACT AIRCRAFT ONLY
NOT FOR CIVIL USE**



EMERG SAFE ALT 100 NM 7000



| CATEGORY | A | B | C | D |
|-----------|--------------------------|--------------------------|-------------------------|----|
| LNAV MDA | 1260-1¼ 987 (1000-1¼) | 1260-1½ 987 (1000-1½) | 1280-3 1007 (1100-3) | NA |
| CIRCLING* | 1260-1¼ 987 (1000-1¼) | 1260-1½ 987 (1000-1½) | 1280-3 1007 (1100-3) | NA |



RNAV (GPS) RWY 35

AK, 20 FEB 2025 to 17 APR 2025

AK, 20 FEB 2025 to 17 APR 2025