

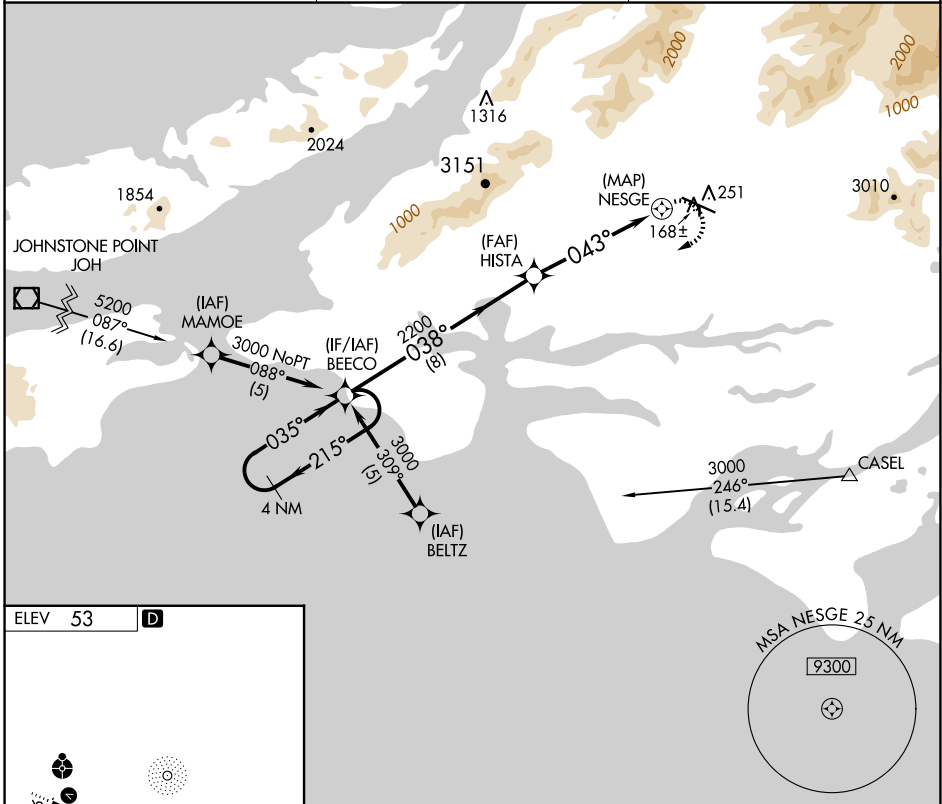
APP CRS	Rwy Idg	N/A
043°	TDZE	N/A
	Apt Elev	53

RNAV (GPS)-B

MERLE K (MUDHOLE) SMITH (CDV)(PACV)

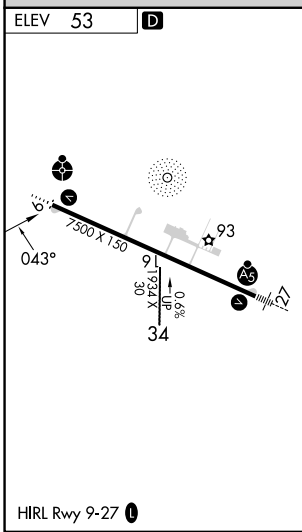
RNP APCH-GPS.	<p>⚠ Circling to Rwy 16/34 NA at night. When local altimeter setting not received, use Valdez altimeter setting and increase all MDAs 120 feet. Circling NA north of Rwy 9/27. Rwy 16/34 helicopter visibility reduction below 1 SM NA.</p>	<p>MISSED APPROACH: Climbing right turn to 3000 direct BEECO and hold.</p>

ASOS 134.8	ANCHORAGE CENTER 119.3 133.6 269.4	JUNEAU RADIO 122.2 123.6 (CTAF) 1
----------------------	--	---



AK, 20 FEB 2025 to 17 APR 2025

AK, 20 FEB 2025 to 17 APR 2025



<p>4 NM Holding Pattern</p>	BEECO		3000	BEECO
	<p>HISTA</p>		NESGE	
<p>3000 ← 215°</p> <p>035° →</p> <p>038°</p> <p>2200</p> <p>043°</p>	<p>8 NM</p>		<p>5.2 NM</p>	
CATEGORY	A	B	C	D
CIRCLING	520-1	467 (500-1)	520-1½ 467 (500-1½)	1540-3 1487 (1500-3)

RNAV (GPS)-B